



PRODUCT INFORMATION

June 2013



1125-6-35 1" Hand Crank Bare Hose Reel

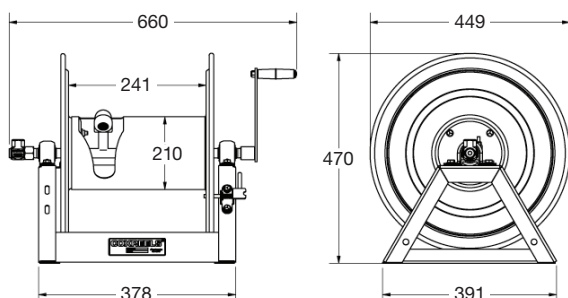
The 1125-6-35 hand crank bare hose reel available from Coxreel USA and Alemlube is well-engineered and manufactured and meets the criteria demanded by industry professionals and features a sturdy one-piece all welded "A" frame base, low profile outlet riser and open drum slot design providing a non-crimping, flat smooth hose wrap.

Rotation is extremely smooth due to permanently lubricated self-aligning pillow block bearings and an adjustable tension brake prevents "free-wheeling" during operation.

A solid steel direct hand crank with smooth round handle assists in ease of operation with strength and safety facilitated by rolled edges and ribbed discs.

PRODUCT SPECIFICATIONS, FEATURES AND BENEFITS

1" bare reel
Professional grade heavy duty steel construction
Pressure rating of 300psi
Durable powder coated finish
Nickel plated steel swivel
All welded steel "A" frame structure
Nickel plated steel full-flow swivel
Low profile outlet riser & open drum slot design
Adjustable tension brake
Long handled rotation locking pin for use during transport or storage
Solid steel direct hand crank with smooth round handle
11m hose capacity
Weight of 23kg



ORDERING INFORMATION

1125-6-35
1" Hand Crank Hose Bare Reel - 25mm ID x 10m

