

Description

The OS615 oxy-acetylene hose reel constructed in steel and inclusive of a corrosion resistant powder coat finish is ideal for general welding applications. Supplied complete with 15 metres of twin hose and a 1.5metre long lead in hose, the reel is rated to 300psi. The double o'ring seal design prevents leakage and the swivel body and inlet are both permanently identified with machined grooves on the acetylene side to ensure correct installation.

Specifications

Uses	General oxy-acetylene welding applications
Hose Length	15 metres of 4mm ID twin hose
Materials	Powder coated steel base and barrel assembly, rubber hose and steel spring
Discharge Quantity	Up to 85 Litres per minute free flow
Weight	22kg's
Outlet/Inlet	5/8" UNF (f) outlet x 5/8" BSP/NPT (f) inlet

Installation of reel

- 1 For overhead ceiling mounting, install the reel at least 3 metres above the floor.
- 2 You will need to purchase appropriate hardware for the mounting of your new reel.
- 3 The reel base has four 12.7mm (1/2") drilled holes for mounting on a suitable surface. Figure A is a template showing the correct location of the 4 mounting holes in the base.
- 4 Using the 4 holes in the base, mount the reel in the desired location.
- 5 Apply teflon tape or pipe sealant to the outer fitting on the hose then attach to the welding gun to the delivery hose. Check connections for any leakages. Also check the OS615 for correct operation..... see Operation section for further details.
- 6 If hose stop adjustment is required pull hose from the reel and allow the reel to latch at the desired length. Loosen hose stop bolts and slide hose stop to a position close to the hose guides, retighten the hose stop bolts and unlatch the reel.

Operation

- 1 Check your OS615 oxy-acetylene welding reel for correct operation by slowly pulling out the hose. A clicking noise will be heard every half revolution of the barrel assembly.
- 2 To latch the reel, pull the hose out and allow it to latch after hearing the first, second or third "click".
- 3 To delatch the reel, slowly pull out the hose until the "clicking" noises stop, then let the hose retract until the hose stop rests against the hose guide assembly.



Warnings & Safety Issues

- 1 Connect the oxygen inlet hose and the acetylene inlet hoses correctly and ensure that incoming line pressures do not exceed the pressure rating of 300psi.
- 2 Locate the hose reel in a well ventilated area.
- 3 After completing installation of the OS615, run pressure tests to make sure that there are no leakages on any of the connections. We highly recommend that you check for leaks regularly.
- 4 Immediately repair or replace hose reel components including hoses if any gas leaks are detected. Leaking oxygen or acetylene can cause serious fires, damage to property and/or personal injury.
- 5 When installing or replacing o'rings, lubricate only with silicon grease. Do not allow other types of grease or oil to enter the hose reels fluid path as these materials ignite easily and burn in the pressure of oxygen.
- 6 Do not direct a gas flame at the OS615 or the hose on the OS615.
- 7 Do not undertake any welding work with damaged or faulty equipment.

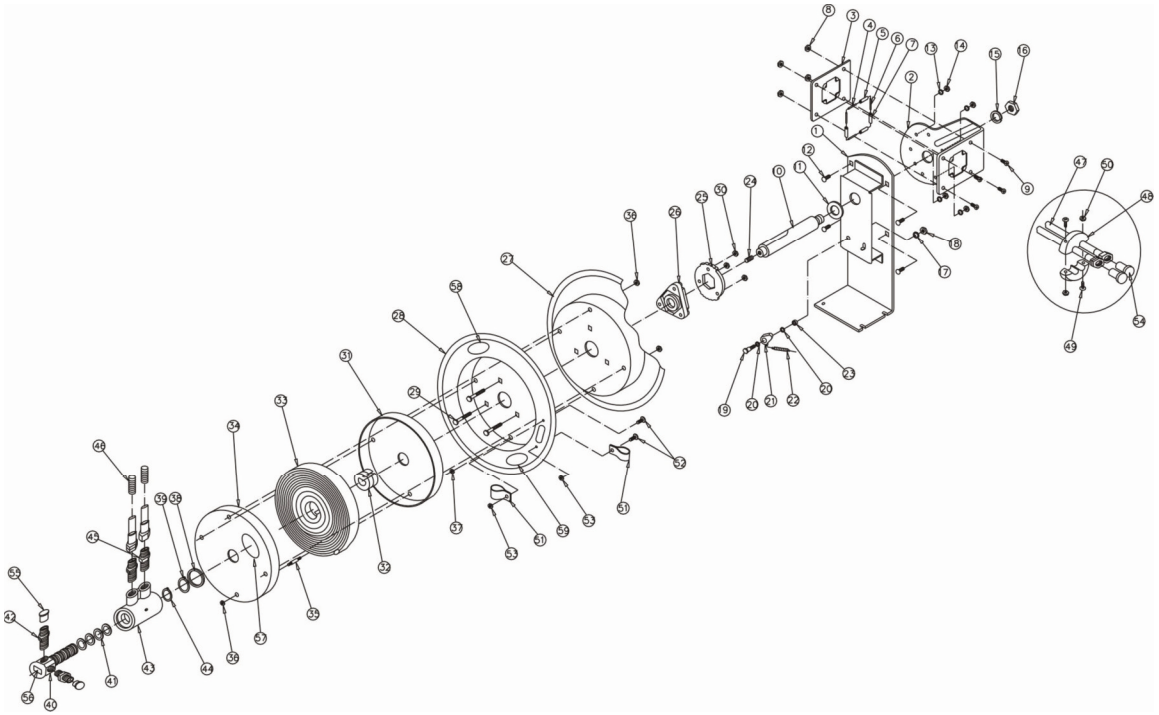
To avoid damaging your OS615 oxy-acetylene welding reel, always hold onto the hose while it is rewinding back on to the barrel assembly. Failure to do so will void the manufacturer's warranty.

Also, periodically you will need to check the hose for wear and tear and check the swivel fitting for any leaks. Immediate replacement of any worn, damaged or leaking parts is required.

General

Thank you for choosing to buy and use the OS615 oxy-acetylene welding reel supplied by Alemlube. We trust that the OS615 proves to be a reliable, time saving, cost saving and a productivity increasing piece of equipment for you and your company.

Parts And Drawing Breakdown OS615



Ordering Spare Parts

Parts List – Part No. OS615

ITEM No.	PART No.	DESCRIPTION	QTY
1	OS615-1	Base	1
2	OS615-2	Dispensing Arm	1
3	OS615-3	Hose Guide Assembly Sub Plate	1
4	OS615-4	Roller Axle	2
5	OS615-5	Roller	2
6	OS615-6	Roller Axle	2
7	OS615-7	Roller	2
8	OS615-8	Nut	4
9	OS615-9	Screw	4
10	OS615-10	Shaft	2
11	OS615-11	Washer	1
12	OS615-12	Bolt	4
13	OS615-13	Washer	4
14	OS615-14	Nut	4
15	OS615-15	Retainer	1
16	OS615-16	Locking Nut	1
17	OS615-17	Washer	1
18	OS615-18	Locking Nut	1
19	OS615-19	Bolt	1
20	OS615-20	Washer	2
21	OS615-21	Latch Pawl	1
22	OS615-22	Latch Pawl Spring	1
23	OS615-23	Retainer	1
24	OS615-24	Screw	1
25	OS615-25	Latching Mechanism	1
26	OS615-26	Assembly Hub Bearing	1
27	OS615-27	Right Side Barrell Assembly	1
28	OS615-28	Left Side Barrell Assembly	1
29	OS615-29	Bolt	3
30	OS615-30	Nut	3
31	OS615-31	Right Side Spring Cover	1
32	OS615-32	Spring Core	1
33	OS615-33	Spring Assembly	1
34	OS615-34	Left Side Spring Cover	1
35	OS615-35	Bolt	4
36	OS615-36	Nut	8
37	OS615-37	Nut	4

NSW

TEL: (02) 9939 0711
FAX: (02) 9939 0411

QLD/PNG

TEL: (07) 3889 8480
FAX: (07) 3889 8490

VIC/TAS

TEL: (03) 8787 8288
FAX: (03) 8787 8266

WA

TEL: (08) 9209 3066
FAX: (08) 9209 3933

SA/NT

TEL: (08) 8241 7111
FAX: (08) 8241 7011

NZ

TEL: (09) 447 1007
FAX: (09) 447 1008

Parts List Continued – Part No. OS615

ITEM No.	PART No.	DESCRIPTION	QTY
38	OS615-38	Washer	1
39	OS615-39	Retainer	1
40	OS615-40	Swivel Spool	1
41	OS615-41	O Ring	4
42	OS615-42	Fitting (LH)	2
43	OS615-43	Swivel Body	1
44	OS615-44	Retainer	1
45	OS615-45	Fitting (RH)	2
46	OS615-46	Hose Protection Spring	1
47	OS615-47	Hose Assembly	1
48	OS615-48	Hose Stop	2
49	OS615-49	Screw	2
50	OS615-50	Nut	2
51	OS615-51	Hose Assembly Clamp	2
52	OS615-52	Screw	2
53	OS615-53	Nut	2
54	OS615-54	Protection Cover	1

NSW
TEL: (02) 9939 0711
FAX: (02) 9939 0411

QLD/PNG
TEL: (07) 3889 8480
FAX: (07) 3889 8490

VIC/TAS
TEL: (03) 8787 8288
FAX: (03) 8787 8266

WA
TEL: (08) 9209 3066
FAX: (08) 9209 3933

SA/NT
TEL: (08) 8241 7111
FAX: (08) 8241 7011

NZ
TEL: (09) 447 1007
FAX: (09) 447 1008