

Description

Model 5040/5060A is a high volume, manually operated, rotary action drum pump that delivers up to 100 L/min. It is designed for the refuelling of both on and off road vehicles and large machinery. The simple design of the 5040/5060A allows easy servicing if required. The pump comes complete with delivery hose and includes a replaceable foot filter. * PLEASE NOTE: OIL GEARS BEFORE USE (SAE 30 oil is recommended for this purpose).

Specifications

Uses	Diesel and low viscosity oils up to SAE 30
Discharge Quantity	1L per rotation / 100 L/min
Materials	Cast Aluminium, Buna N Seals
Weight	7.0kg
Size	Suction pipe: 32mm ID x 1m Delivery hose: 5040 - 25mm ID x 1.2mm long, 5060A - 25mm ID x 2.2mm long

Operating instructions

1 Oil Gears Before Use

Before using the 5040/5060A high volume rotary refuelling pump, make sure that you fill the gear cover with oil. Fill with SAE 30 oil or equivalent to the reference line through the lubrication bolt hole (as indicated on the diagram). Inspect periodically.

2 Revolution Direction

The handle turns in a clockwise direction and the pump discharges one litre per one revolution of the handle.

3 Filter

A filter of #60 mesh polyethylene net is supplied as standard on the pump and is located at the bottom of the suction pipe. Rotating the handle and therefore operating the pump may become harder if the filter is clogged with impurities that may have been filtered out of the fuel or low viscosity oil. It is recommended that you remove the filter periodically and clean it with kerosene.

4 Cautions

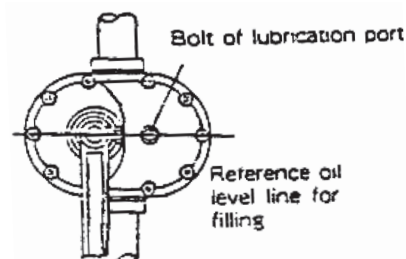
Suitable liquids include most low viscosity liquids such as diesel, unleaded petrol, kerosene and low viscosity oils. Although the pump can be used to pump other liquids of high viscosity, the pump becomes harder to operate and doing so will shorten the life of the pump & may void the warranty.

Do not use this pump for any solvent or chemical transfer as these liquids will dissolve the Buna N seals and gaskets, etc. (Use the 301-A, 401-A, 733 or 933 for solvents).

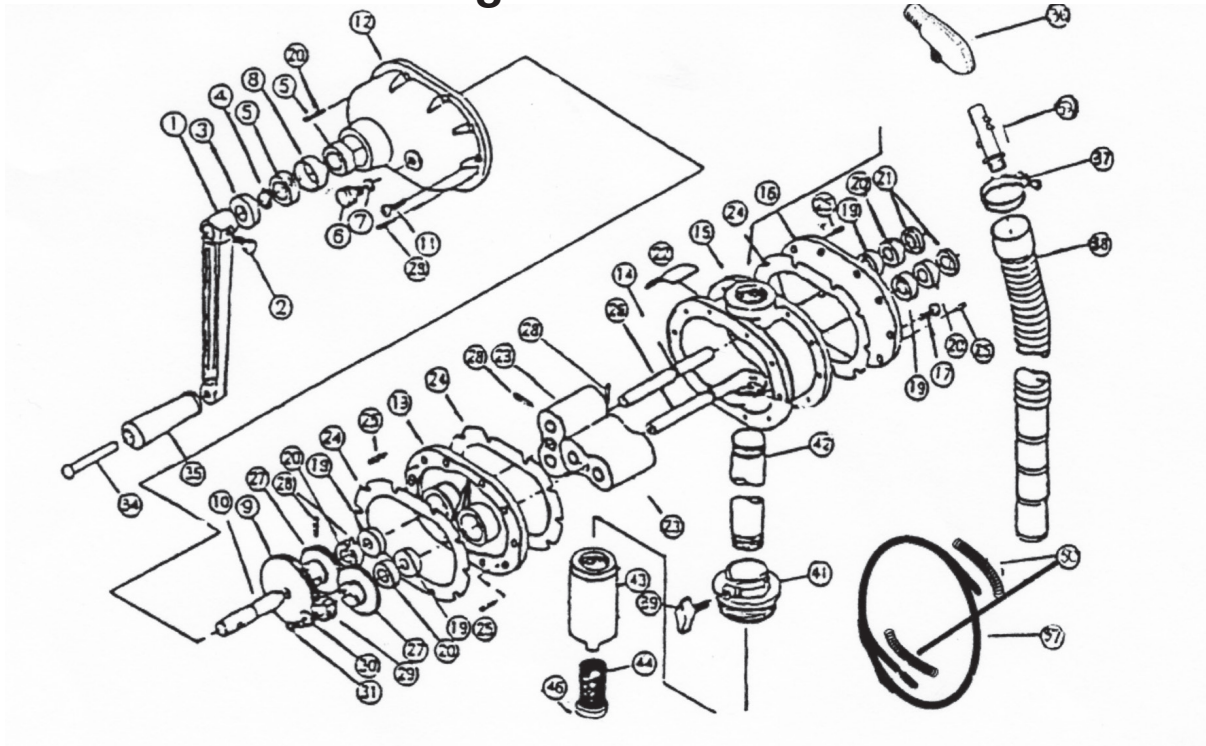
Please note when pumping fuels like kerosene, petrol or diesel, these products tend to "dry out" the internals of the pump causing parts "to stick" and the pump not to prime and dispense. To stop this from happening and to increase the working life of your pump, we recommend that you lubricate the gears of the pump by dropping a few drops of oil into the pump body by taking off suction pipe (2000-42) & lubricating at this opening. After undertaking lubrication of the pump in such a manner, please rotate the handle a few times.

Do not pump liquids containing dirt or particles such as waste oil. Strained liquids may block the filter, preventing discharge, which can damage the pump interior or cause other problems.

NOTE: We recommend that the pump is inspected for any damaged twice a year and that the oil inside the pump head is replaced every 12 months.



Parts and Drawing Breakdown For 5040/5060A



Ordering Spare Parts

Parts List – Part No. 5040/5060A

ITEM	PARTS NO	DESCRIPTION	QTY	ITEM	PARTS NO	DESCRIPTION	QTY
1	2000-1-2-34-35	Handle Assby	1	25	2000-25	Taper Pin	3
2	2000-2	Hexagon Bolt	1	27	2000-27	Timing Gear	2
3	2000-3	Oil Seal	1	26	2000-26	Taper Pin	2
4	2000-4	Stop Ring	1	28	2000-28	Pin	2
5	2000-5	Bearing	2	29	2000-29	Pinion Gear	1
6	2000-6	Bolt	1	34	2000-34	Handle Pin	1
7	2000-7	O'Ring	1	35	2000-35	Handle	1
8	2000-8	Collar	1	37	2000-37	Hose Clamp	1
10	2000-9-10	Gear Shaft	1	38	2000-38	Delivery Hose (5040)	1
11	2000-11	Screw	10	39	2000-39 (52983)	Bung Screw	1
12	2000-12	Gear Cover	2	41	2000-41*	Bung Adaptor	1
13	2000-13	Inside Cover	10	42	2000-42	Down Tube	1
14	2000-14	Roots shaft	4	43	2000-43	Filter Body	1
15	2000-15	Housing	2	43	2000-43-44-46	Filter Assembly	1
16	2000-16	Outside cover	2	44	2000-44	Strainer	1
17	2000-17	Screw	3	46	2000-46	Filter Stopper	1
19	2000-19	Oil Seal	6	50	2000-50	Spring (Nozzle) (5060A)	1
20	2000-20	Bearing	4	51	2000-51	Fuel Hose Assby (5060A)	1
21	2000-21	Oil Seal	2	52	2000-52	Nozzle (5060A)	1
22	2000-22	Nameplate	1	53	2000-53	Nozzle Holster (5060A)	1
23	2000-23	Impeller	2				
24	2000-24	Seal	3				

*Note: 2000-43, -44, -46 only available in kit form as 2000-43-44-46

*Note: 2000-25 & 2000-28 is one complete part.

Trouble Shooting

TROUBLE	REMEDY
Handle fails to turn	Gears broken - Return for repair. Dirt, etc clogging up the pump - Overhaul & clean.
Not Priming / Pumping	Impeller dry - lubricate at down tube / body point, turn handle a few times.
Handle is hard to turn	Dirt, etc clogging up the pump - Overhaul & clean. Filter blocked - Clean the filter
Handle turns but no discharge	Gears broken / Shaft or pin broken - Return for repair

NSW

TEL: (02) 9939 0711

FAX: (02) 9939 0411

QLD/PNG

TEL: (07) 3204 9166

FAX: (07) 3204 1224

VIC/TAS

TEL: (03) 8787 8288

FAX: (03) 8787 8266

WA

TEL: (08) 9209 3066

FAX: (08) 9209 3933

SA/NT

TEL: (08) 8241 7111

FAX: (08) 8241 7011

NZ

TEL: (09) 447 1007

FAX: (09) 447 1008