

### Description

The 20044 Cordless Rechargeable LED Workshop Light has 34 LED elements. The 30 LEDs on the side of the light are for general ambient lighting and the other 4 LEDs below the 30 LEDs are an indicator of the battery charge level. The life of the LED elements is rated to 100,000 hours. The light is shatterproof, oil resistant, IP65 waterproof and is supplied inclusive of a 240volt recharger and a 12-28volt cigarette charger. The maximum active life of the light after full recharge is approximately 7-8 hours. A full charge for 5 hours must be completed prior to the initial use of the light to ensure correct operation of your 20044.

### Specifications

Uses	Illumination of vehicles in workshop applications, industrial, marine and farming applications
Battery	3.7V - 3600 MAH Li-polymer
Light output	2.8W
Voltage	3.7V
Power	Input-AC100-240V 60/50HZ Output DC12V 800MA Input-DC12-28 V
Full Recharge Time	5 Hours
Active Life	7-8 Hours
Operating Temperature	-5°C to +45°C
Dimensions	290mm long x 50mm diameter

### Operating Instructions

The 20044 Cordless Rechargeable LED Workshop Light is suitable for a multitude of applications. Ideal as a rechargeable light source in industrial plants, automotive workshops, food & beverage facilities, above ground mine sites (where permissible), camping, marine, or just at home. The 20044 can be recharged using the 240volt AC power or the 12-28volt DC power from the cigarette lighter in your vehicle.

Connect the appropriate power cord to the docking station; the indicator on the docking station will illuminate red. During charging, the 4 LED indicator will keep flashing. Make sure the lamp and the charger have a good contact. If the 4 LED indicator lights do not flash, please double check the contact of the light and the charger. Leave the lamp in the docking station for approximately 5 hours and when the battery is fully charged, the 4 LED light indicators will stop flashing. Then you can remove the lamp from the charger for use.

The hook of the 20044 enables 'hands free' use of the light and can assist in storage of the 20044 as well.

The 20044 LED Cordless Rechargeable Workshop Light will assist you to undertake repair and service work in poorly lit areas reducing frustration, plant and machinery downtime and possibly costs relating to parts and equipment replacement.

Storage temperature of the 20044 is between -20°C and +40°C and the lifetime of the LEDs is rated at up to 100,000 hours.

### Warnings & Safety Issues

**If you do not intend to use the light for 6-8 months, please fully discharge and charge the battery prior to storing the light.**

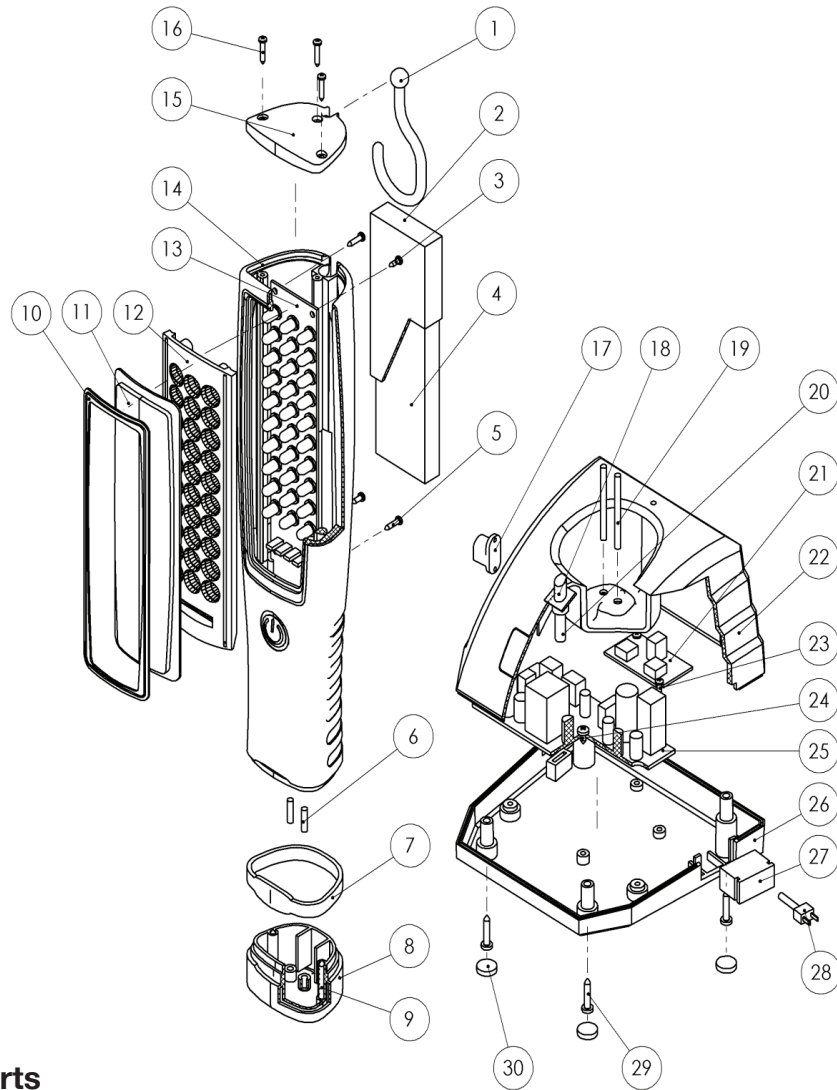
Please do not have the light on during the recharging process. Avoid looking directly into the light. Do not use the light near open flames.

### General

Thank you for choosing to buy and use the 20044 LED Cordless Rechargeable Workshop Light supplied by Alemlube. We trust that the 20044 proves to be a reliable, time saving, cost saving and a productivity increasing tool for you and your company.



# Parts And Drawing Breakdown 20044



## Ordering Spare Parts

### Parts List – Part No. 20044

Part No.	Description	Qty	Part No.	Description	Qty
20044-1	Hook	1	20044-16	Screw ST 2.2*13	3
20044-2	Battery package	1	20044-17	DC socket	1
20044-3	Screw ST2.2*6.5	2	20044-18	Lens of Charger	1
20044-4	3.7V x 3600mAH/Li-polymer Battery	1	20044-19	Anchor Pin	1
20044-5	Screw ST 2.2*9.5	2	20044-20	Charging indicator	1
20044-6	Cuprum pin	1	20044-21	Connect Board	1
20044-7	Decorative Ring	1	20044-22	Charger Top Cover	1
20044-8	Bottom Cover	1	20044-23	Screw ST2.2*6.5	2
20044-9	Screw ST2.9*28	2	20044-24	Screw ST2.9*6.5	1
20044-10	O-ring protector	1	20044-25	Charger PCB board	1
20044-11	Lens	1	20044-26	Charger Bottom Cover	1
20044-12	Reflector Cover	1	20044-27	AC socket	1
20044-13	PCB Board	1	20044-28	AC Power Cord with Plug	1
20044-14	Main Lamp Body	1	20044-29	Screw ST2.9*19	4
20044-15	Top Cover	1	20044-30	Plastic Pad	4

NSW  
TEL: (02) 9939 0711  
FAX: (02) 9939 0411

QLD/PNG  
TEL: (07) 3889 8480  
FAX: (07) 3889 8490

VIC/TAS  
TEL: (03) 8787 8288  
FAX: (03) 8787 8266

WA  
TEL: (08) 9209 3066  
FAX: (08) 9209 3933

SA/NT  
TEL: (08) 8241 7111  
FAX: (08) 8241 7011

NZ  
TEL: (09) 447 1007  
FAX: (09) 447 1008