

### Description

With covers manufactured from high quality impact resistant and UV stabilised polypropylene and a positive latching mechanism that automatically locks hose at the desired length, the new series of Rolla Reels from Alemite Lubrequip will provide you with a reliable cost effective means of storing and retrieving hose assemblies in your workshop or garden. The reels can be floor, ceiling or wall mounted and the detachable mounting bracket facilitates ease of reel mounting and storage (if required). Each and every reel is tested for its ability to hold pressure and hose retraction prior to leaving the factory and stringent adherence to assembly and operation standards guarantees you years of trouble free operation. Non snag roller guide assemblies, crimped hose ends and dependable swivels and spring assemblies are other product features that ensure trouble free hose storage and retrieval.

### Specifications

Uses	Air and Water
Hose Lengths	AP650 – 15m of 10mmID hose. AP840 – 13m of 12mmID hose. WP840 – 18m of 12mmID hose.
Materials	Plastic covers, steel spring & Buna “N” seals
Weight	11Kgs
Inlet	AP650 – 3/8”BSPT (m). AP840 – 1/2”BSPT(m). WP855 – 1/2”BSP(m)
Outlet	AP650 – 3/8”BSPT (m). AP840 – 1/2”BSPT(m). WP855 – 1/2”BSP(m)

### Installation Of Reel

- 1 For overhead ceiling mounting: install reel at least 3 metres above the floor.
- 2 You will need to purchase appropriate hardware for the mounting of your new reel.
- 3 The reel base has three 10.5mm (13/32) drilled holes for mounting on a suitable flat surface. Figure 2 is a template showing the correct location of the 3 mounting holes in the base.
- 4 Using the three holes in the base, mount the reel in the desired location. Be sure to use appropriate hardware and to tighten the reel securely to the mounting location.
- 5 Apply Teflon tape or pipe sealant to the outlet fitting on the Rolla Reel hose, then attach to desired tool or nozzle. Check connection for any leakage, also check the Rolla Reel hose for correct operation. See operation section. If hose stop adjustment is required, pull hose from reel and allow the reel to latch at the desired length. Loosen hose stop bolts and slide hose stop to a position close to the hose guide. Tighten hose stop bolts and unlatch the reel.

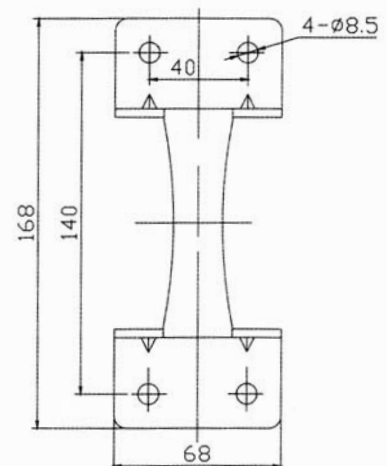


### Operation

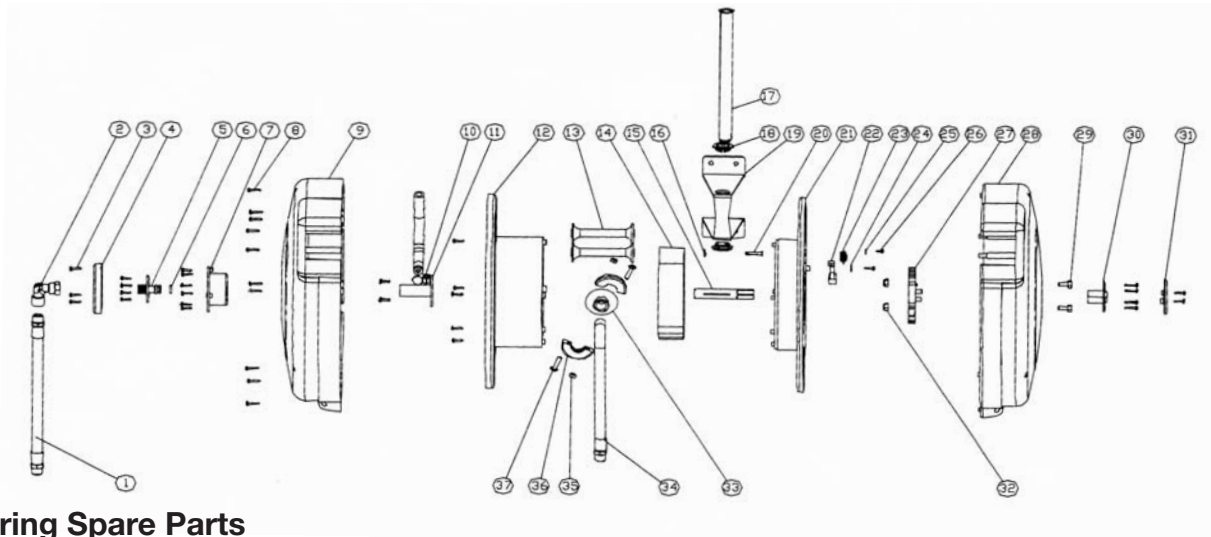
- 1 Check your Rolla Reel for correct operation by slowly pulling out the hose. A clicking noise will be heard every half revolution of the drum.
- 2 Latching mode switch, when your Rolla Reel is in free run state, pull out the hose and allow it to retract after hearing the first, second or third click.
- 3 To unlatch the reel slowly pull out the hose until the clicking noise stops, and then let the hose retract until the hose stop rests against the hose guide.
- 4 NOTE: To avoid damage to the Rolla Reel, always hold onto the hose while it is rewinding. Periodically check the hose condition for wear or damage and check the swivel fitting for leakage. Replace any worn, damaged or leaking parts.

### Warning

- 1 Make sure incoming line pressure does not exceed the rated operating pressure for your model hose reel.
- 2 Use proper eye protection when assembling and using the hose reel.
- 3 Use soap and water when checking for leaks.
- 4 Keep children away from the work area.



# Parts and Drawing Breakdown For The Rolla Reels



## Ordering Spare Parts

Parts List – Part No. AP650/AP840/WP855

ITEM No.	PART No.	DESCRIPTION	QTY
1	AP650-1	Inlet Hose	1
2	AP650-2	Elbow Fitting	1
3	AP650-3	Screw, ST4.2*16	25
4	AP650-4	Cover	1
5	AP650-5	Swivel Spool	1
6	AP650-6	O-ring, 20112	1
7	AP650-7	Bushing	1
8	AP650-8	Screw, ST4.2*19	14
9	AP650-9	Outer casing	1
10	AP650-10	Hose Clip	1
11	AP650-11	Swivel Body	1
12	AP650-12	Drum	1
13	AP650-13	Roller	2
14	AP650-14	Main Spring	1
15	AP650-15	Axle	1
16	AP650-16	Lock Pin	1
17	AP650-17	Support Axle	1
18	AP650-18	Bush	1
19	AP650-19	Bracket	1
20	AP650-20	Clevis Pin	1
21	AP650-21	Drum	1
22	AP650-22	Ratchet Paw	1
23	AP650-23	Spring, Dog	1
24	AP650-24	Washer	1
25	AP650-25	Washer	1
26	AP650-26	Screw, ST4.2*9.5	1
27	AP650-27	Locking Ring	1
28	AP650-28	Outer casing	1
29	AP650-29	Bolt, M8*16	2
30	AP650-30	Spring Adjustable Bushing	1
31	AP650-31	Cover	1
32	AP650-32	Nut, M8	2
33	AP650-33	Hose Stop	1
34	AP650-34	Hose Assembly	1
34A	AP840-34	Hose Assembly	1
34B	WP855-34	Hose Assembly	1
35	AP650-35	Nut, M6	2
36	AP650-36	Clip	2
37	AP650-37	Screw, M6*25	1

Head Office NSW  
TEL: (02) 9939 0711  
FAX: (02) 9939 0411

VIC  
TEL: (03) 8787 8288  
FAX: (03) 8787 8266

QLD  
TEL: (07) 3889 8480  
FAX: (07) 3889 8490

SA/NT  
TEL: (08) 8241 7111  
FAX: (08) 8241 7011

WA  
TEL: (08) 9209 3066  
FAX: (08) 9209 3933

TAS  
TEL: (03) 6343 0477  
FAX: (03) 6343 0911