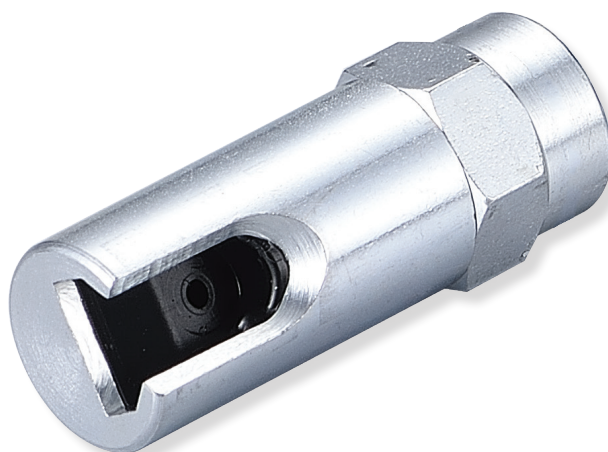




14508

## 90° push on grease gun coupler



October 2021

The Alemlube 14508 90° push on grease gun coupler is an industrial quality grease gun coupler cleverly designed to assist in reaching difficult to access hydraulic grease nipples such as those situated on ball joints.

Measuring just 41mm in length the 14508 90° push on grease gun coupler with 1/8" BSP(f) thread connection features a poly seal that fits snugly to most grease nipples found on fixed plant machinery and mobile equipment.

The Alemlube 14508 fits most standard grease guns and is the ideal accessory to have on hand in the workshop and in the field for when those tricky greasing jobs arise.

**SPECIFICATIONS, FEATURES AND BENEFITS**

- Industrial quality grease gun coupler suitable for standard hydraulic grease nipples
- 1/8" BSP(f) thread
- Fits most grease gun types: manual, pneumatic and battery powered grease guns
- Compact design enables access to difficult to reach lube points
- Poly seal fits most grease nipples
- Length of 41mm
- Weight of 26gm

Also available:

**A14508** in blister pack

