

### Description

Made in Italy, these compact, high quality, heavy duty plastic hose reels are designed for industrial use even in applications where a durable and reliable plastic hose reel is required. The AWP series reels are designed to handle both air and water and are thus a flexible product in your workshop, factory and service station forecourt. The AWP1014 comes complete with 10mm ID x 14 metres of hose while the AWP1215 comes complete with 12mm ID x 15 metres of hose for those applications where a greater volume of air is required for your air tools or rattle guns, etc.

### Specifications

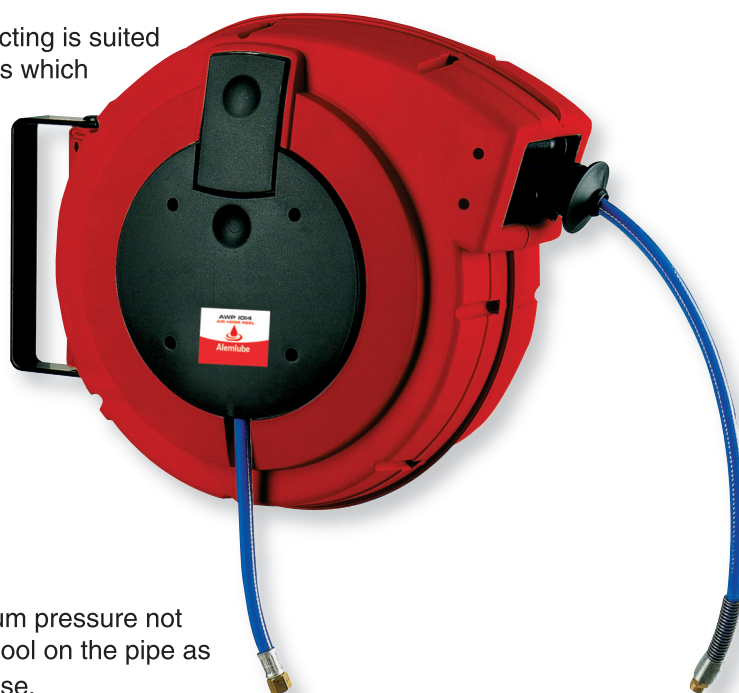
Uses:	The AWP series hose reels are spring rewind, plastic covered enclosed reels designed for use with air & water only and are ideal for use in the smaller workshop or where space is limited.
Capacity:	AWP1014 - 10mm x 14m    AWP1215 – 12mm x 15m
Weight / Dimensions:	5.9kg approx.    36H x 20W x 45D cm
Maximum Temperature:	40°C
Maximum pressure:	217psi

### General Safety Rules

- 1 This product must not be used by children or unskilled persons.
- 2 Always check the good working order of the product which, if not adequate, could endanger the user.
- 3 Always check that the power of the tool you are connecting is suited to the work to be carried out in order to avoid overloads which could be dangerous for the operator and could reduce the life of the tool.
- 4 Never remove any of the appliance's components.
- 5 Do not use the reel in damp or wet conditions.

### Installation

Fasten the reel to the wall using appropriate wall plugs. Check that the hose returns in a straight line with respect to the casing and make sure that is not dragged long the sides of the opening when entering. The reel is supplied with a ratchet stop device which clamps the hose/cable in the position required.



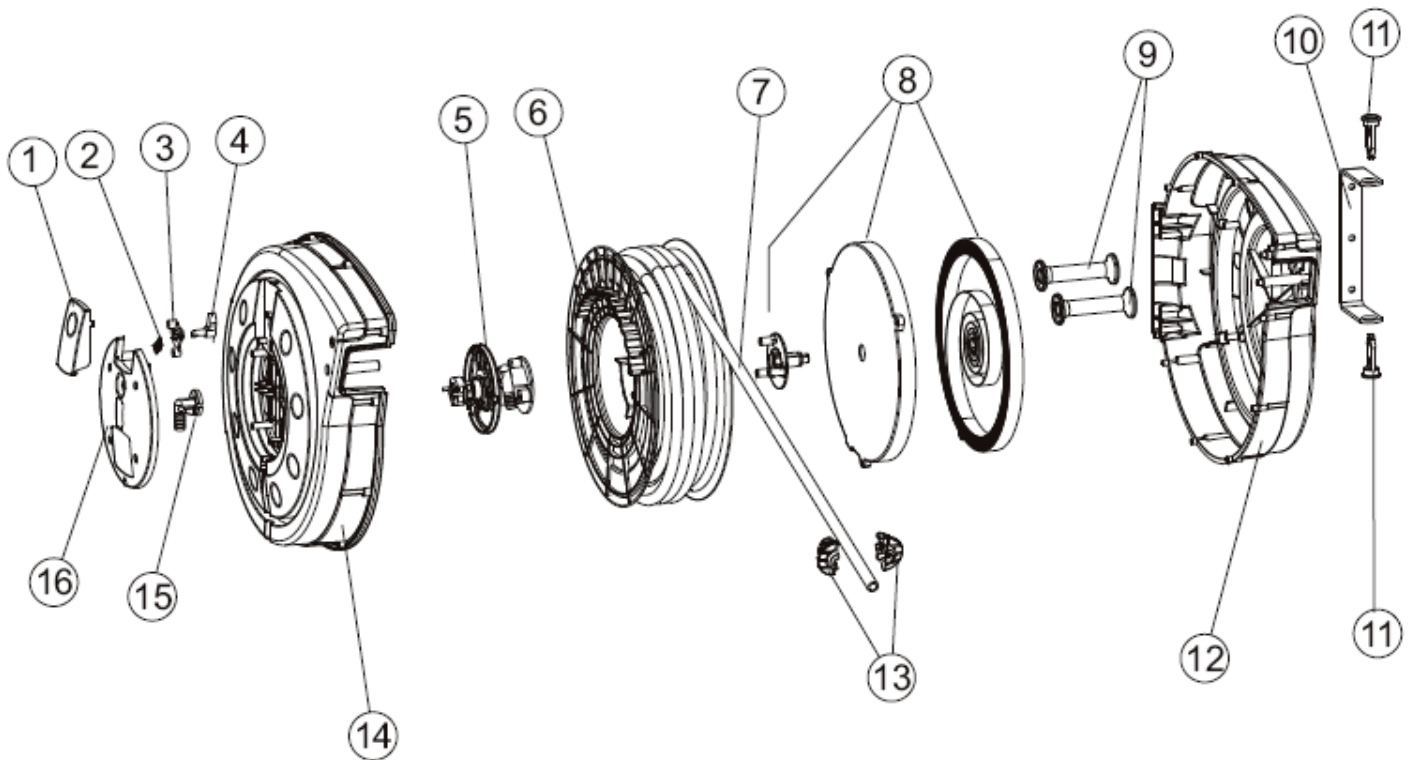
### Pneumatic Connections

Connect hose reel to compressed air system at a maximum pressure not exceeding 10 bar. Install a quick fitting or the pneumatic tool on the pipe as it comes out, using the fitting already pressed onto the base.

### Guarantee

12 MONTHS from the date of machine start-up as stated on the certificate. The manufacturer commits to carrying out, free of charge, the replacement of pieces which may result faulty because of poor material quality or defects in construction. Problems caused by incorrect use, tampering or negligence are not covered by the guarantee. Shipping charges shall be incurred by the buyer.

# Parts And Drawing Breakdown AWP1014/AWP1215



## Ordering Spare Parts

Parts List – Part No. AWP1215 / AWP1014

Item	Part N.O.	Description	Qty	Item	Part N.O.	Description	Qty
	<b>AWP1215</b>	<b>Spare Parts List</b>			<b>AWP1014</b>	<b>Spare Parts List</b>	
1	AWP1215-1	Cover for locking mechanism	1	1	AWP1215-1	Cover for locking mechanism	1
2	AWP1215-2	Spring for locking mechanism	1	2	AWP1215-2	Spring for locking mechanism	1
3	AWP1215-3	Flange for locking mechanism	1	3	AWP1215-3	Flange for locking mechanism	1
4	AWP1215-4	Locking mechanism	1	4	AWP1215-4	Locking mechanism	1
5	AWP1215-5	Swivel assembly 1/2"	1	5	AWP1014-5	Swivel assembly 3/8"	1
6	AWP1215-6	Spool assembly	1	6	AWP1014-6	Spool assembly	1
7	AWP1215-7	Hose assembly 15mx1/2"	1	7	AWP1014-7	Hose assembly 14mx3/8"	1
8	AWP1215-8	Spring assembly	1	8	AWP1014-8	Spring assembly	1
9	AWP1215-9	Roller guide assembly	1	9	AWP1014-9	Roller guide assembly	1
10	AWP1215-10	Metal mounting bracket	1	10	AWP1215-10	Metal mounting bracket	1
11	AWP1215-11	Bracket support	2	11	AWP1215-11	Bracket support	2
12	AWP1215-12	Back red cover	1	12	AWP1014-12	Back red cover	1
13	AWP1215-13	Hose stop	1	13	AWP1014-13	Hose stop	1
14	AWP1215-14	Front red cover	1	14	AWP1014-14	Front red cover	1
15	AWP1215-15	Elbow 13mm	1	-			1
16	AWP1215-16	Black cover	1	16	AWP1014-16	Black cover	1

NSW  
TEL: (02) 9939 0711  
FAX: (02) 9939 0411

QLD/PNG  
TEL: (07) 3889 8480  
FAX: (07) 3889 8490

VIC/TAS  
TEL: (03) 8787 8288  
FAX: (03) 8787 8266

WA  
TEL: (08) 9209 3066  
FAX: (08) 9209 3933

SA/NT  
TEL: (08) 8241 7111  
FAX: (08) 8241 7011

NZ  
TEL: (09) 447 1007  
FAX: (09) 447 1008