

Description

The AP609 and AP1009 compact retractable air hose reels are ideal for smaller type workshops or where work space is at a premium. Light weight and portable, the built in carry handle (not depicted) assists when moving or storing the reel. Supplied complete with a mounting bracket and a 0.9 metal lead in hose, the maximum operating pressure of the AP609 and AP1009 is 300psi. Currently at a unique price point, the AP609 and AP1009 hose reels are ideal for intermittent or seasonal use, in applications where larger lengths of hose are not required and where space is limited.

Specifications

Uses	Compressed air transfer
Hose Lengths	9 metres
Materials	Plastic covers and barrels, steel spring and rubber hose
Weight	5kg
Outlets/Inlets	AP609 – 1/4" BSP(m) inlet and 1/4" BSP (m) outlet AP1009 – 3/8" BSP(m) inlet and 3/8" BSP(m) outlet

Installation Of The Reel

- 1 You will need to purchase appropriate hardware for the mounting of your hose reel.
- 2 The mounting bracket of the hose reel has two 6mm OD drilled holes for mounting the reel on a suitable flat surface.
- 3 Using the two holes in the base, mount the reel in the desired location. Be sure to use appropriate hardware and to tighten all hardware used securely.
- 4 Connect the end of the inlet hose assembly to the desired source of air supply.
- 5 To use the air reels with air tools on a tyre gauge with different thread connections, suitable adaptors will need to be acquired. Check connections for any leaks.
Also, check the AP609 or AP1009 for correct operation see the Operation section as follows below.
- 6 If hose stop adjustment is required, pull hose from the reel and allow the reel to latch at the desired length. Loosen hose stop bolts and slide hose stop to the desired position, retighten the hose stop bolts and unlatch thereel.



Operating Instructions

- 1 Check your AP609 or AP1009 compact retractable air reel for correct operation by slowly pulling out the hose. A clicking noise will be heard every half revolution of the barrel assembly.
- 2 To latch the reel, pull the hose out and allow it to latch after hearing the first, second or third "click."
- 3 To delatch the reel, slowly pull out the hose until the clicking noises stop then let the hose retract until the hose stop rests against the hose guide.

Warnings & Safety Issues

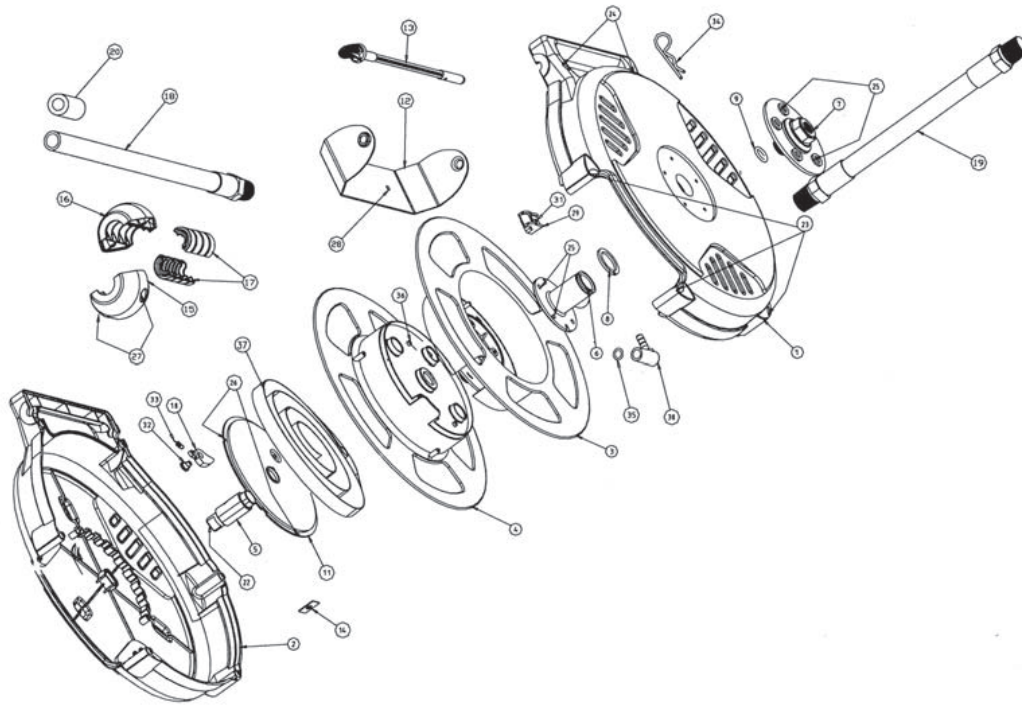
To avoid damaging your AP609 or AP1009 compact retractable air hose reel, always hold onto the hose while it is rewinding back on to the barrel assembly. Failure to do so will void the manufacturer's warranty.

Also, periodically you will need to check the hose for wear and tear and check the swivel fitting for any leaks. Immediate replacement of any worn, damaged or leaking parts is required.

General

Thank you for choosing to buy and use the AP609 or AP1009 compact retractable air hose reel supplied by Alemlube. We trust that your AP609 or AP1009 proves to be a reliable, time saving, cost saving and a productivity increasing tool for you and your company.

Parts and Drawing Breakdown For The AP609 and AP1009



Ordering Spare Parts

Parts List – Part No. 501

ITEM NO.	PART NO.	DESCRIPTION	QTY
1	AP1009-1	Air Side Cover	1
2	AP1009-2	Spring Side Cover	1
3	AP1009-3	Air Side Barrel Assembly	1
4	AP1009-4	Spring Side Barrel Assembly	1
5	AP1009-5	Internal Shaft	1
6	AP1009-6	Shaft	1
7	AP1009-7	Cover Flange	1
8	AP1009-8	Snap Ring	1
9	AP1009-9	O Ring 2-112	1
10	AP1009-10	Latch Pawl	1
11	AP1009-11	Cover Plate	1
12	AP1009-12	Mounting Bracket	1
13	AP1009-13	Mounting Rod	1
14	AP1009-14	Rivet Reinforcement	1
15	AP1009-15	Top Hose Stop	1
16	AP1009-16	Bottom Hose Stop	1
17	AP1009-17	Hose Stop Insert	2
18	AP1009-18	Hose Assembly	1
19	AP1009-19	Lead In Hose Assembly	1
20	AP1009-20	Hose Clamp	1
21	AP1009-21	Screw	2
22	AP1009-22	Screw 3.5*50	4
23	AP1009-23	Screw 4.2*32	2
24	AP1009-24	Screw 4.2*13	9
25	AP1009-25	Screw 2.9*13	3
26	AP1009-26	Screw 4.2*25	1
27	AP1009-27	Screw 4.2*2.5	2
28	AP1009-28	Screw 4.2*38	2
29	AP1009-29	Hold Down Clamp	1
30	AP1009-30	Nozzle	1
31	AP1009-31	Screw 2.9*16	1
32	AP1009-32	Pin	1
33	AP1009-33	Latch Pawl Spring	1
34	AP1009-34	Pin Handling Pod	1
35	AP1009-35	O Ring	1
36	AP1009-36	Screw 3.5*16	2
37	AP1009-37	Main Spring Assembly	1

NSW
TEL: (02) 9939 0711
FAX: (02) 9939 0411

QLD/PNG
TEL: (07) 3889 8480
FAX: (07) 3889 8490

VIC/TAS
TEL: (03) 8787 8288
FAX: (03) 8787 8266

WA
TEL: (08) 9209 3066
FAX: (08) 9209 3933

SA/NT
TEL: (08) 8241 7111
FAX: (08) 8241 7011

NZ
TEL: (09) 447 1007
FAX: (09) 447 1008