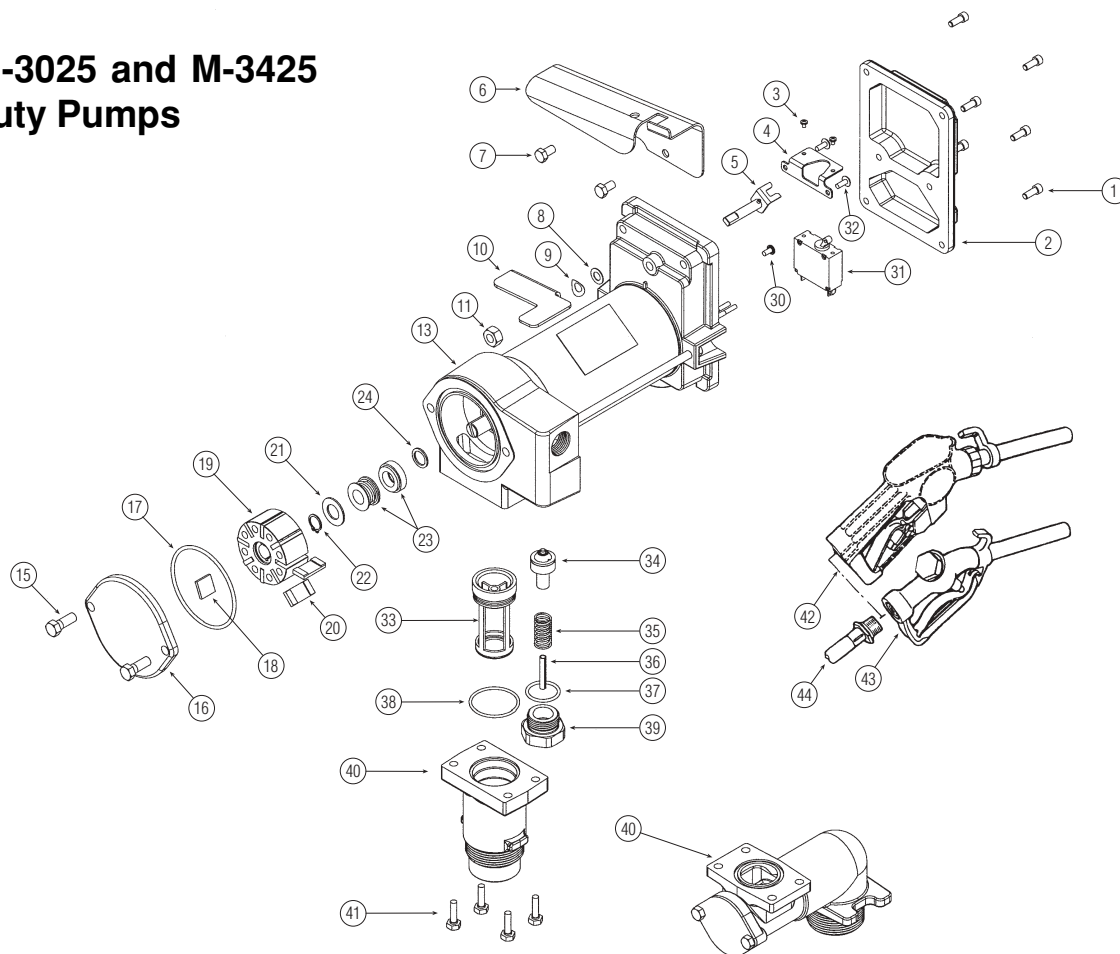


Fuel

Series M-3025 and M-3425 Heavy Duty Pumps



Item No.	Part No.	Description	No. Req'd.
1	904006-60	Screw, 1/4-20 x 5/8 in.	6
2	133076-1	Conduit Box Cover	1
3	904005-56	Screw, #6-32 x 3/16 in.	2
4	133078-1	Switch Mounting Bracket	1
5	133086-1	Switch Actuator Assembly	1
6	133082-1	Nozzle Cover	1
7	904004-59	Screw, 5/16-18 x 3/4 in.	2
8	904006-16	Flat Washer	1
9	904006-63	Spring Washer	1
10	133081-1	Switch Lever	1
11	904006-62	Lock Nut, 3/8-16	1
13	133508-01	Motor Assembly, 12-volt DC *	1
	133508-02	Motor Assembly, 24-volt DC *	1
15	904006-38	Screw, 3/8-16 x 1 in.	2
16	133032-1P	Coverplate	1
17	901003-15	O-Ring	1
18	121010-1	Motor Shaft Key	1
19	133022-1	Rotor	1
20	133020-1	Vane – Carbon	8
21	133027-1	Spacer Washer	1
22	904006-33	Retaining Ring	1
23	906004-77	Shaft Seal	1

Item No.	Part No.	Description	No. Req'd.
24	133026-1	Slinger Washer	1
30	904006-70	Ground Screw, #10-32 x 3/8"	1
31	902006-55	Switch/Motor Protector, 12-volt DC motor ..	1
	902006-60	Switch/Motor Protector, 24-volt DC motor ..	1
32	904002-25	Screw, #10-32 x 3/8 in.	2
33	133102-1	Filter Assembly	1
34	133505-01	Poppet Assembly Kit	1
35	133063-1	Poppet Spring	1
36	906004-50	Spring Pin	1
37	901002-50	O-Ring	1
38	901002-89	O-Ring	1
39	133059-1P	Bypass Plug	1
40	133099-1P	Inlet Base	1
	133052-01	Optional "L" Shaped Inlet Base	1
41	904004-37	Screw, Hex Head, 5/16-18 x 1 in.	4
42	906005-1	Automatic Nozzle, Diesel	1
	133242-1	Hook for Automatic Nozzle	1
43	906001-10	Manual Nozzle, Leadless	1
44	110188-1	Hose Assembly, Fuel	1
	133093-1	Cord Assembly, 10/3 x 15 ft. (not shown)	1
	902005-91	Strain Relief (not shown)	1

Kits and Accessories

133052-01 Base Assembly with Check Valve
 133501-1 Vane Kit
 133503-1 Shaft Seal Kit

133504-1 Seal Kit
 133509-02 Brush Kit (16 bar) *

* To retain Underwriters Laboratory (UL) Listing, any motor repair or service must be completed by a repair shop authorized by UL or returned to the factory. If the motor is removed from the pump, serviced, or repaired by an unauthorized repair center, the pump should indicate loss of UL Listing by removal or defacing of appropriate labels.