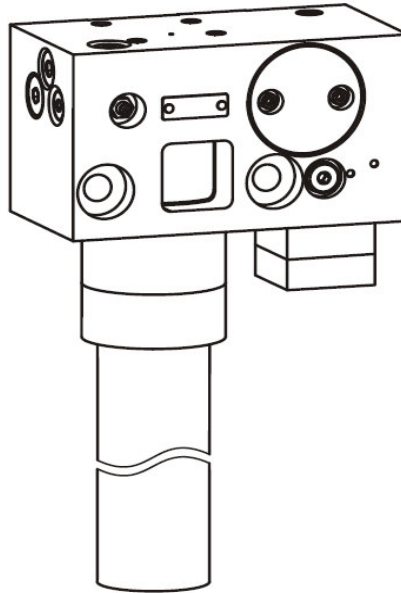


## **BEKA HAMAX 2 HYDRAULIC GREASE PUMP**

### **1.1 HAMAX 2 GREASE PUMP**



#### **APPLICATIONS**

For installation directly onto hydraulic hammers to lubricate the bushing.

HAMAX2 tees into the main hydraulic pressure and return lines and operates each time the hammer is used. A flow control valve regulates the cycle speed of the pump.

Various types of grease cartridges and adaptors are available as accessories.

Connects via flange or by hoses.

#### **SPECIFICATIONS**

Operation:	Hydraulic
Max hydraulic input pressure:	90 - 250 Bar
Max hydraulic back pressure:	20 Bar
Max hydraulic flow:	2 lpm
Default cycle speed:	14 cycles/min
Grease flow rate:	0.12cc/cycle
Max grease pressure:	280 Bar (by relief valve)
Connections:	1/4"BSP or flange

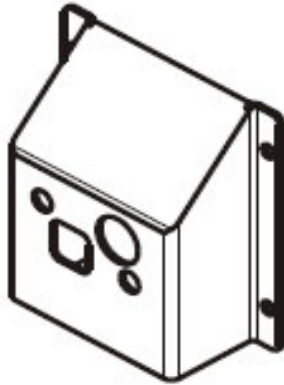
#### **MODEL NUMBER\***

25760110202*	HAMAX2 PE-120FH Type S and EP2 cartridge incl mounting hardware	\$3,320.00
--------------	---	------------

#### **OPTIONS**

With adjustable pumping element PE-120VH	ADD	\$108.00
*See the HAMAX2 catalog for full details on the model codes and options.		

## **1.2 HAMAX2 PUMP PROTECTION PLATE KIT**



### **APPLICATIONS**

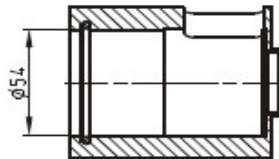
Made of pressed steel the plate protects the pump from damage.

### **MODEL NUMBER**

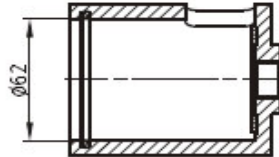
25760002	Protection kit (incl mounting bolts)	\$ 280.00
----------	--------------------------------------	-----------

## **1.3 HAMAX2 CARTRIDGE ACCESSORIES**

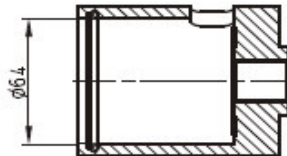
Adapter 2576GK0001 - for cartridge Type S:



Adapter 2576GK0002 - for cartridge Type F:



Adapter 2576GK0003 - for cartridge Type L:



### **APPLICATIONS**

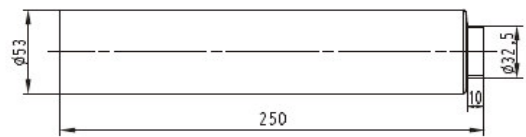
The three types adaptors allow different types of cartridges to be used.  
The adaptors are fitted into the HAMAX2 pumps with socket head screws.

### **MODEL NUMBER**

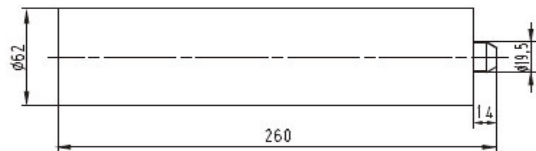
2576GK0001	Adaptor for Type S 54mm diam	\$ 180.00
2576GK0002	Adaptor for Type F 62mm diam	\$ 180.00
2576GK0003	Adaptor for Type L 64mm diam	\$ 180.00

**1.4 HAMAX2 CARTRIDGES**

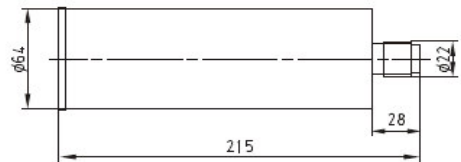
Type S - BEKA standard:



Type F:



Type L:



**APPLICATIONS**

Several types of cartridges can be supplied according to the needs of the hammer.

**MODEL NUMBER**

0320090	Copper paste Type F	\$ 55.00
0320091	Copper paste Type S	\$ 38.00
0320092	EP2 grease Type S	\$ 25.00