

Description

The 5005A refuelling drum pump is designed for the transfer of fuels and lubricants up to SAE30. This economical and hard working drum pump has a delivery rate of approximately 1 litre per stroke or approximately 40 litres per minute. Lockable and light weight, the pump is supplied with 2.4 metres of delivery hose, a versatile metal delivery spout and a spout holster. The simple and proven design of the 5005A makes this pump the ideal drum pump for fuel and lubricant transfer in challenging and harsh operating environments.

Specifications

Uses	Petrol, diesel, kerosene and lubricants up to SAE30 from 60 or 205 litre drums
Discharge Quantity	40 litres per minute or 1 litre per stroke
Inlet/Outlet	Inlet: 1" BSP Outlet: 3/4" BSP
Hose	2.4 metres of 1" ID fuel resistant hose
Materials	Hardened steel handle, pressed metal and polypropylene body with nylon piston and piston rings

Fitment Of The Telescopic Downtube To Pump

- 1 Remove nut (5005A-15) containing the rubber washer from the pump.
- 2 Slide the large diameter end of downtube into nut (5005A-15) and rubber washer.
- 3 Push the downtube into the pump ensuring that the downtube travels a minimum of 50mm (2") into the inlet of the pump head.
- 4 Tighten nut (5005A-15) on thread to secure the downtube firmly in place.

Fitment Of The Pump To Tank Or Drum

- 1 Screw up lock nut (5005A-17) to the top of the thread on the bung adaptor
- 2 Pull out short tube (5005A-36) to the fully extended position. Then place the pump in the drum or the tank, push down and screw the pump into the bung thread.
- 3 Tighten up the lock nut (5005A-17).

Fitment Of The Hose To Pump (Sequence Is Important)

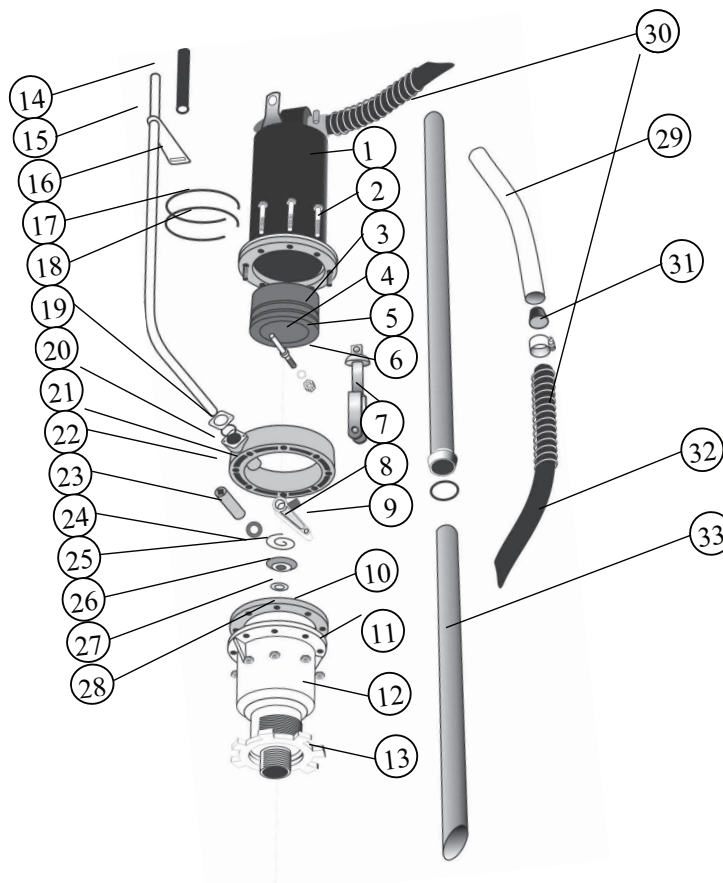
- 1 Place the hose (5005A-35) in the hose holster. (The locking pin on the spout engages in the keyway at the extreme left of the holsters opening).
- 2 Turn the spout fully clockwise to ensure that when fully assembled, the nozzle locking pin rests vertically within the holster.
- 3 Fit hose clamp (5005A-31) loosely to the end of the hose and slide the spring (5005A-32) down onto the hose.
- 4 Push hose end onto the pump outlet, slide the hose clamp (5005A-31) over the hose at the outlet and tighten. Slide the hose spring (5005A-32) up against the hose clamp. Check that the spout locking pin is still in a vertical position inside the holster. If not, adjust the hose position on the spout to resolve this problem.

How The Pump Operates

When the handle is pulled back, the piston is pushed up by the con rod and the valve (5005A-8) closes. At the same time fuel or lubricant on the top of the piston is discharged through the hose. When the handle is pushed forward, the piston is pulled down by the cross bar (5005A-5) and valve (5005A-8) is opened. The fuel or lubricant then flows past valve (5005A-8) through the centre of the piston and fills the cylinder above the piston. The inlet valve (5005A-22) is closed during this stroke.



Parts and Drawing Breakdown For The 5005A



Ordering Spare Parts

Parts List – Part No. 5005A

ITEM	DESCRIPTION	QTY	ITEM	DESCRIPTION	QTY
5005A-1	Cylinder	1	5005A-20	Retainer Plate	1
5005A-2	Bolts Set	8	5005A-21	O Ring Gland	1
5005A-3	Piston	1	5005A-22	Bearing Sandwich	1
5005A-4	Cross Bar	1	5005A-23	Con Rod Pin	1
5005A-5	Washer	2	5005A-24	Con Rod Lock Pin	1
5005A-6	Hex Nut	2	5005A-25	Screwy Spring	1
5005A-7	Connecting Rod Assy	1	5005A-26	Inlet Valve	1
5005A-8	Clevis Screw	1	5005A-27	Inlet Valve Spring	1
5005A-9	Clevis	1	5005A-28	Lock Pin	1
5005A-10	Body Gaskets Set	2	5005A-29	Outlet Spout	1
5005A-11	Nuts	8	5005A-30	Hose Spring	1
5005A-12	Body-Lower Assembly	1	5005A-31	Hose Clamp Set	2
5005A-13	Lock Nut	1	5005A-32	Delivery Hose	2
5005A-14	Knob	1	5005A-33	Down Tube	2
5005A-15	Pump Handle	1			
5005A-16	Buckle	1			
5005A-17	Piston Ring Expander	2			
5005A-18	Piston Rings	2			
5005A-19	Self Tapping Screw	2			

Trouble Shooting

TROUBLE	CAUSE	REMEDY
Fuel leaks at the retainer plate	O'Ring seal (24) worn or damaged	Replace O'Ring (24)
Handle (28) is loose and unit will not pump	Clevis (15) is broken or the connecting rod pin (13) is dislodged	Replace the clevis (15) or connecting rod pin (13)
Pump continues to syphon even after one stops actioning the handle	Spout is lower than the container	Return spout to spout holster
Pump fails to prime	The piston rings are worn out	Replace piston rings
Pump fails to prime	The downtube and the pump head assembly thread connections are not airtight	Reconnect the threads using thread tape
Experiencing problems priming the pump	Air in the downtube, pump head and hose assembly	Ten to fifteen long, hard actions of the handle are needed to prime the pump

Head Office NSW
TEL: (02) 9939 0711
FAX: (02) 9939 0411

VIC
TEL: (03) 8787 8288
FAX: (03) 8787 8266

QLD
TEL: (07) 3889 8480
FAX: (07) 3889 8490

SA/NT
TEL: (08) 8241 7111
FAX: (08) 8241 7011

WA
TEL: (08) 9209 3066
FAX: (08) 9209 3933

TAS
TEL: (03) 6343 0477
FAX: (03) 6343 0911