

Description

The 41020N Stationary Waste Oil & ATF Drainer is designed for the handling and disposal of waste oil and waste ATF. The drain bowl is on a telescoping stand with a positive friction lock and a non-tip base. The oil drain has a minimum height of 1200mm and a maximum height when fully extended of 1900mm .

The drain bowl is detachable from the base for easy disposal of waste lubricants and transmission fluids, the square catchment bowl has a 20 litre holding capacity and a drain adaptor is supplied as standard to facilitate emptying of the bowl when draining of a vehicles sump or transmission is complete.

The new improved model now incorporates a superior locking mechanism that securely locks the stem when required yet it is easy to disconnect when raising or lowering of the drainer stem is required.

Assembly instructions

Connect the external stand tube (41020N-21) to the base assembly (41020N-23) by connecting the male thread on the external stand tube to the female thread on the base assembly. After fitting the valve drain assembly to the square 20L collection bowl (41020N-1) with the aid of the valve body nut (41020N-14), assemble to the base assembly by simply fitting the two parts together. Bung adaptor (41020N-22) can be mounted on to an empty 205 litre drum or onto your waste oil tank and when the bowl is placed on this adaptor, the pin pushes up the valve allowing the waste oil to drain out of the catchment bowl and into the waste oil drum or tank.

Please pay close attention to how you ultimately dispose of waste lubricants and transmission fluids from your premises, as the disposal of waste oil can be a major environmental hazard.

Thank you for choosing to use an Alemlube Lubrequip product to assist in the handling of waste oil in your workshop and should you have any problems in regard to the assembly or operation of the 41020N Stationary Waste Oil and ATF Oil Drainer, our local State Office (see phone no's below) looks forward to being of assistance.

Operating Instructions

- 1 Place the stationery waste oil & ATF drainer in position under the vehicle to be drained.
- 2 Adjust the drain to the required height.
- 3 Remove plug or transmission pan from the vehicle to be drained.
- 4 Allow waste lubricant or transmission fluid to drain completely. Replace plug or transmission pan and transmission pan gasket.
- 5 Lower the drain and lift the drain bowl off the pedestal using the handles provided.

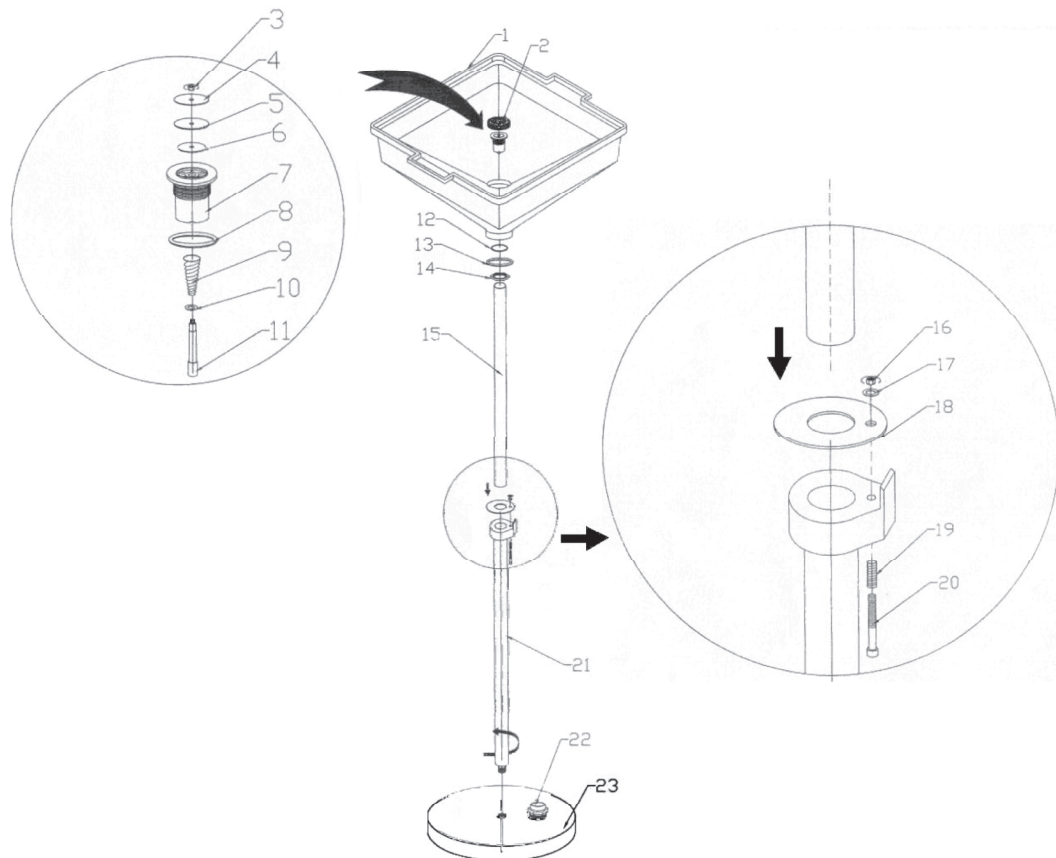
Place the waste lubricant and transmission fluid contaminants bowl onto the drain adapter. Doing so will automatically empty the waste lubricant or transmission fluid into your waste oil tank or drum.

General

Thank you for choosing to buy and use the 41020N Stationary Waste Oil & ATF Drainer supplied by Alemlube Lubrequip. We trust that the 41020N proves to be a reliable, time saving, cost saving and productivity increasing tool for you and your company.



Parts And Drawing Breakdown 41020N



Ordering Spare Parts

Parts List – Part No. 41020N

1	41020N-1	Square 20L Collection Bowl	1
2	41020N-2	Mesh Strainer	1
3	41020N-3	Lock Nut	1
4	41020N-4	Flat Washer	1
5	41020N-5	Rubber Washer	1
6	41020N-6	Flat Washer	1
7	41020N-7	Brass Valve Body	1
8	41020N-8	Flat Washer	1
9	41020N-9	Valve Spring	1
10	41020N-10	Flat Washer	1
11	41020N-11	Stopped Hex Bolt	1
12	41020N-12	Fibre Washer	1
13	41020N-13	Flat Washer	1
14	41020N-14	Valve Body Nut	1
15	41020N-15	Internal Stand Tube	1
16	41020N-16	Lock Nut	1
17	41020N-17	Flat Washer	1
18	41020N-18	Height Locking Ring	1
19	41020N-19	Height Locking Spring	1
20	41020N-20	Hex Bolt	1
21	41020N-21	External Stand Tube	1
22	41020N-22	Drum Adaptor	1
23	41020N-23	Base Assembly	1

NSW
TEL: (02) 9939 0711
FAX: (02) 9939 0411

QLD/PNG
TEL: (07) 3889 8480
FAX: (07) 3889 8490

VIC/TAS
TEL: (03) 8787 8288
FAX: (03) 8787 8266

WA
TEL: (08) 9209 3066
FAX: (08) 9209 3933

SA/NT
TEL: (08) 8241 7111
FAX: (08) 8241 7011

NZ
TEL: (09) 447 1007
FAX: (09) 447 1008