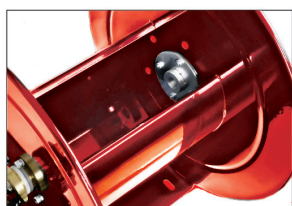


HR50000 Series

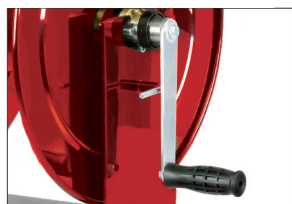
Heavy Duty Hand Crank Hose Reels



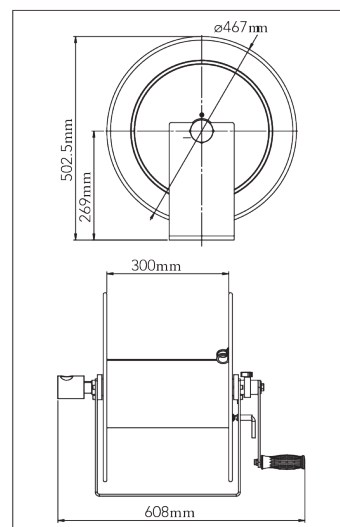
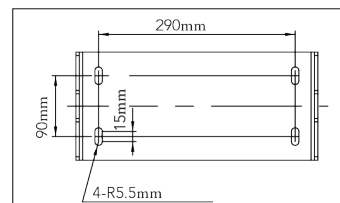
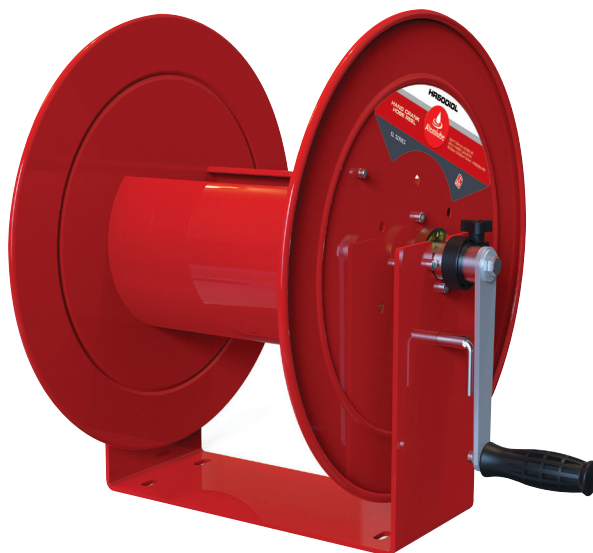
Bearing low/medium pressure swivel.



Wider drum opening (125mm) is convenient for hose installation.



Larger labour saving handle (180mm).



August 2022

The Alemlube HR50000 Series Heavy Duty Hand Crank Hose Reels are designed and manufactured in carbon steel for heavy duty and rugged conditions in industries requiring long lengths of hose and large storage capacity.

Manufactured utilising high-quality materials, the HR50000 Series hose reels withstand rigorous all day, every day use and are sure to provide a long service life. Manufactured with no aluminium parts, the reels are suitable for underground coal mine use.

Capable of handling operating pressures of up to 4,000psi (276bar), the HR50000 series are bare reels that can be fitted with 1/2" to 3/4" ID hoses (subject to model) and are suitable for the transfer of diesel, oil, compressed air and water.

A deceleration device that effectively prevents generating inertial force when pulling out a hose addresses safety during operation

SPECIFICATIONS, FEATURES AND BENEFITS

- Designed for all industrial, manufacturing, food & beverage and mining applications
- Open drum design facilitates accurate hose wrap
- New handle & swivel design reduces operator effort by up to 70%
- Locking mechanism prevents drum rotation during operation
- Wide drum opening for ease of hose installation
- Large labour saving handle
- Robust build ensures a long service life
- Note that these are bare reels, hoses not included
- NBR rubber swivel seals
- Brass swivel in HR50010L
- Carbon steel swivel in HR50010M and HR50020M

Part No.	Hose ID	Hose Length	Inlet / Outlet	Maximum Pressure	Gross Weight	Net Weight	Carton Sizes	Material
HR50010L	3/4"	30m	3/4"BSP(f)	290psi (20bar)	18.2kgs	14.5kgs	52.5cm x 54.5cm x 59cm	Carbon Steel
HR50010M	3/4"	30m	3/4"BSP(f)	4,000psi (276bar)	18.2kgs	14.5kgs	52.5cm x 54.5cm x 59cm	Carbon Steel
HR50020M	1/2"	46m	1/2"BSP(f)	4,000psi (276bar)	18.2kgs	14.5kgs	52.5cm x 54.5cm x 59cm	Carbon Steel