

Description

The new SP610 Propane hose reel from Alemlube is a genuine industrial quality welding reel ideal for all general welding applications undertaken by contractors, fabricators and people involved in the construction and industrial fields. Featuring impact resistant UV stabilised covers for maximum durability and an automatic and positive latching mechanism, the SP610 can easily be mounted on the wall or ceiling and can be carried in utes and service vehicles.

Specifications

Uses	Propane welding
Hose Length	20m x 6mm ID rubber hose and 0.9 lead in hose
Materials	Plastic UV stabilised cover & steel spring
Pressure	300 psi (20 bar)
Dimensions	630mm (L) x 442mm (H) x 261mm (W)
Inlet/Outlet	Lead in hose: 5/8" UNF (f) fitting
Working Temp	-30°C ~ 60°C

Safety Precautions

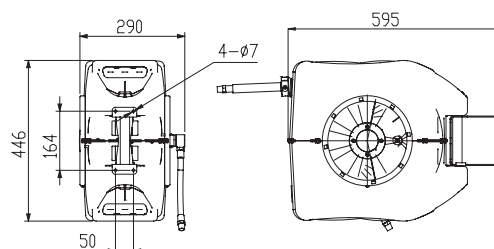
General Safety Rules

- WARNING:** Read and understand all instructions.
- WARNING:** The warnings, cautions, and instructions discussed in this instruction manual cannot cover all possible conditions or situations that could occur. It must be understood by the operator that common sense and caution are factors which cannot be built into this product, but must be supplied by the operator.

Hose Reel Safety Precautions

- 1 Use proper eye protection when assembling and using the hose reel.
- 2 Keep children away from the work area.
- 3 Personal injury and/or equipment damage may result if proper safety precautions are not observed.
- 4 Ensure that reel is properly installed before connecting input and output hoses.
- 5 Bleed fluid/gas pressure from system before servicing reel.
- 6 Before connecting reel to supply line ensure that pressure does not exceed maximum working pressure rating of reel.
- 7 Remember, even low pressure is very dangerous and can cause personal injury or death.
- 8 If a leak occurs in the hose or reel, remove system pressure immediately.
- 9 Ensure that reel, hose, and equipment being service are properly grounded.
- 10 If reel ceases to unwind or rewind, remove system pressure immediately.
- 11 Do not pull or jerk on hose.

- WARNING:** Exposure of skin directly to pressurized air, or fluids could result in severe bodily injury.



Installation Of Reel

- 1 Prior to mounting the hose reel, ensure that the supply line pressure does not exceed the maximum working pressure of the hose reel.
- 2 Unpack and inspect the reel for damage. Turn by hand to check for smooth operation. Check for completeness.
- 3 For overhead ceiling mounting: Install reel at most 10ft/3m above the floor.
- 4 You will need to purchase appropriate hardware for mounting your new reel.
 - A) The base has four 6.5mm drill holes for mounting on a suitable flat surface.
 - B) Using the four holes in the base, mount the reel in the desired location. Be sure to use appropriate hardware and tighten securely.
- 5 **IMPORTANT:** Apply teflon tape or pipe sealant to supply line threads, attach to reel inlet and tighten. The other end of incoming line can now be connected to the desired supply source.
- 6 **IMPORTANT:** Apply teflon tape or pipe sealant to outlet fitting on reel hose, then attach to desired tool or nozzle. Check connection for leakage, also check hose reel for correct operation. See: Operation Section.
- 7 If hose stopper adjustment is required, pull hose from reel and allow to latch at desired length. Loosen stopper bolts and slide stopper to a position close to the hose guide. Tighten stopper bolts and unlatch the reel.

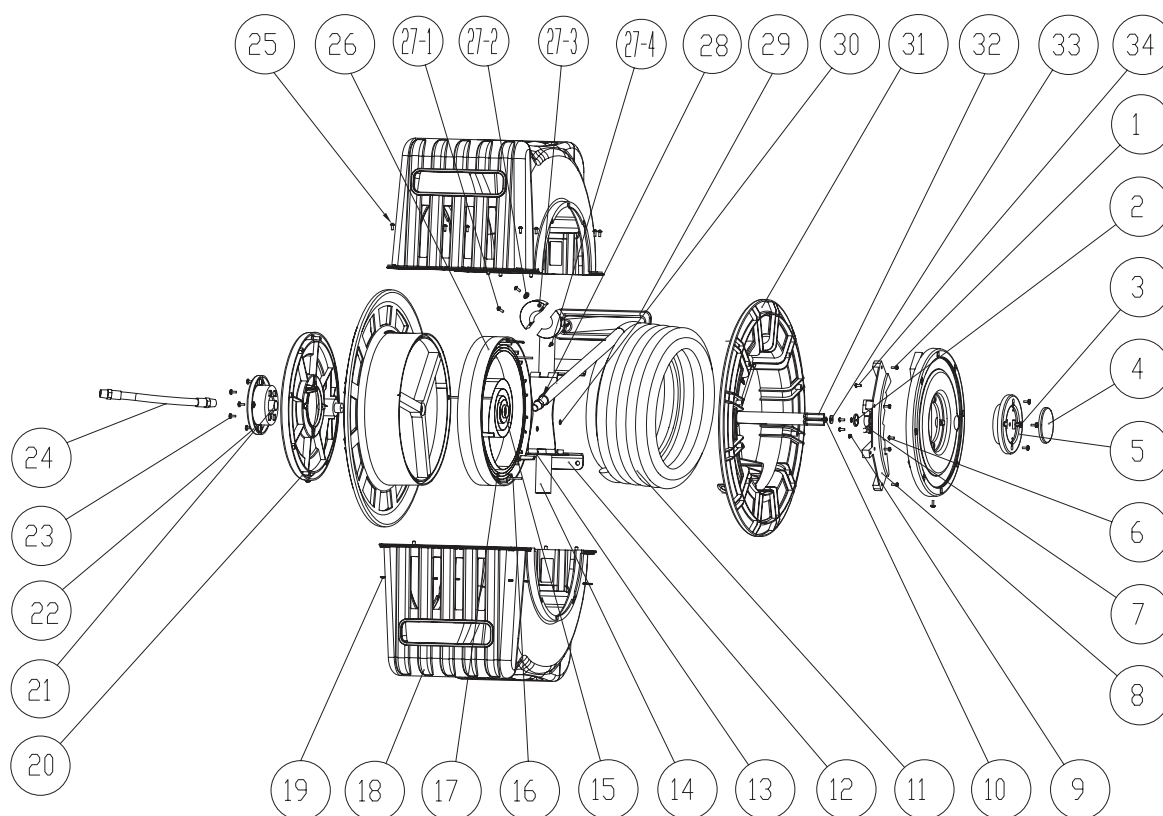
Operation

- 1 Check your S Series reel for correct operation by slowly pulling out the hose. A clicking noise will be heard every half revolution of the drum.
- 2 Latching mode switch, when your S Series reel is in free run state, pull out the hose and allow it to retract after hearing the first, second or third click.
- 3 To unlatch the reel, slowly pull out the hose until the clicking noise stops, and then let the hose retract until the hose stop rests against the hose guide.
- 4 If necessary, adjust spring tension on reel by adding or removing wraps of hose from spool, one wraps at a time, until desired tension is obtained. Add wraps to increase tension. Remove wraps to decrease tension.

Warning

1. Make sure the hose is in proper working order.
2. Clean the hose with a cloth dipped in hot water to remove dirt or deposits and ensure correct rewinding.
3. Do not use detergents or solvents which could prove incompatible with cable-winder materials.
4. Dismantling of the unit by unskilled person could prove hazardous: the risk involved mainly concern the preloaded springs.

Parts and Drawing Breakdown For SP610 Hose Reel



Ordering Spare Parts SP610 Spare Parts List

Item No.	Part No.	Description	QTY
1	SP610-1	Screw ST4.8x13 F	8
2	SP610-2	Clip for Ratchet	1
2A	SP610-2-7-9-10-20	Ratchet Assembly	1
3	SP610-3	Screw ST4.2x16 F	8
4	SP610-4	Small Cover	1
5	SP610-5	Cover for Axle	1
6	SP610-6	Screw ST2.9x13 F	2
7	SP610-7	Ratchet	1
8	SP610-8	Ratchet Ring	2
9	SP610-9	Ratchet Spring	1
10	SP610-10	Screw ST3.5x13 C	3
11	SP610-11	Hose Assembly	1
11A	SP610-11	Hose Assembly	1
11B	SP610-11	Hose Assembly	1
12	SP610-12	Bracket	1
13	SP610-13	Stator	1
14	SP610-14	Axle	1
15	SP610-15	Stator	2
16	SP610-16	Screw ST4.87x75 C	3
17	SP610-17	Main Spring	1
18	SP610-18	Red Cover	2
19	SP610-19	Nut M4	10
20	SP610-20	Big Cover	1

Item No.	Part No.	Description	QTY
21	SP610-21	Swivel Assembly	1
21A	SP610-21	Swivel Assembly	1
21B	SP610-21	Swivel Assembly	1
22	SP610-22	Cover for Spool	1
23	SP610-23	Screw M5x12	2
24	SP610-24	Inlet Hose Assembly	1
24A	SP610-24	Inlet Hose Assembly	1
24B	SP610-24	Inlet Hose Assembly	1
25	SP610-25	Screw M4x1	10
26	SP610-26	Spring Clamp	1
27-1	SP610-27-1	Screw M6x40	2
27-2	SP610-27-2	Washer 8	2
27-3	SP610-27-2	Hose Stopper	1
27-3A	SP610-27-3	Hose Stopper	1
27-3B	SP610-27-3	Hose Stopper	1
27-4	SP610-27-4	Nut	2
28	SP610-28	Tube Fitting	1
29	SP610-29	Guide Protector	1
30	SP610-30	Washer 3	3
31	SP610-31	Drum	2
32	SP610-32	Main Axle	1
33	SP610-33	Washer 4	1
34	SP610-34	Screw ST2.9x9.5C	1

NSW/ACT
TEL: (02) 9677 1555
FAX: (02) 9675 1155

QLD/PNG
TEL: (07) 3204 9166
FAX: (07) 3204 1224

VIC/TAS
TEL: (03) 8787 8288
FAX: (03) 8787 8266

WA
TEL: (08) 9302 4199
FAX: (08) 9303 2095

SA/NT
TEL: (08) 8241 7111
FAX: (08) 8241 7011

NZ
TEL: (09) 447 1007
FAX: (09) 447 1008