

EXP-40

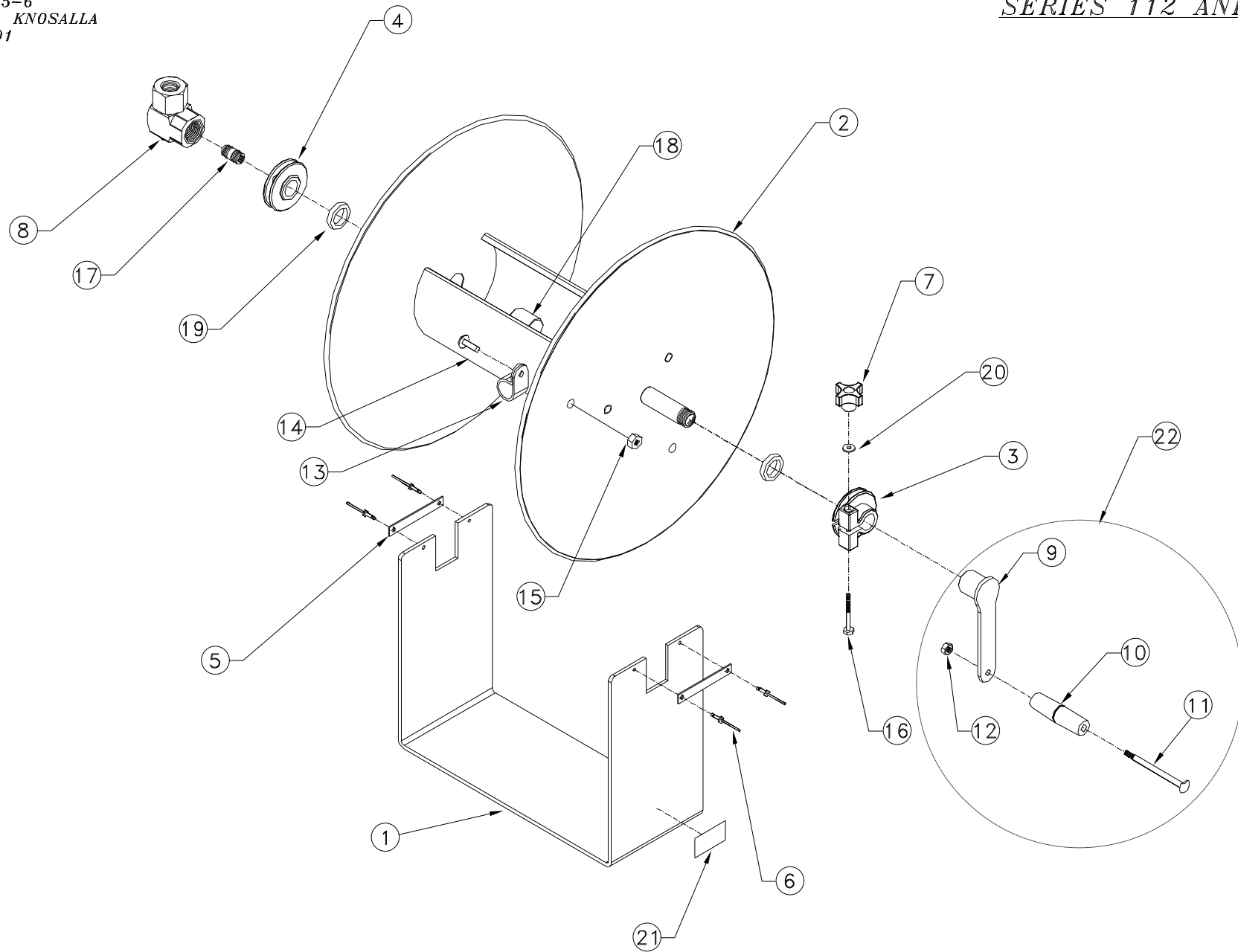
REVISION: N

ECO NO.: 1785-6

DRAWN BY: J. KNOSALLA

DATE: 9/14/01

COXREELS
SERIES 112 AND 117



COMMON PARTS TO ALL "U" FRAME CHALLENGER REELS

ASSY. ITEM NO.	DETAIL ITEM NO.	PART NO.	DESCRIPTION	112P-3-8	112-3-100	112-3-150	112-4-75	117-3-250	117-3-400	117-3-550	117-4-225	117-4-350	117-5-100
	1	6304-1-8	FRAME, "U", CHALLENGER	1	1								
		6304-1-12.5	FRAME, "U", CHALLENGER			1	1						
		6304-2-8	FRAME, "U", CHALLENGER					1					
		6304-2-12.5	FRAME, "U", CHALLENGER						1		1		1
		6304-2-18	FRAME, "U", CHALLENGER							1		1	
	2	7118-1-8	DRUM ASSY, 3/8" NPT, 5.5" X 8"W		1								
		7118-1-8-SPEC	DRUM ASSY, 3/8" NPT, 5.5" X 8"W (SS PLUMBING)	1									
		7118-1-12.5	DRUM ASSY, 3/8" NPT, 5.5" X 12.5"W			1							
		7118-2-8	DRUM ASSY, 3/8" NPT, 5.5" X 8"W					1					
		7118-2-12.5	DRUM ASSY, 3/8" NPT, 5.5" X 12.5"W						1				
		7118-2-18	DRUM ASSY, 3/8" NPT, 5.5" X 18"W							1			
		7108-1-12.5	DRUM ASSY, 1/2" NPT, 5.5" X 12.5"W				1						
		7108-2-12.5	DRUM ASSY, 1/2" NPT, 5.5" X 12.5"W								1		
		7108-2-18	DRUM ASSY, 1/2" NPT, 5.5" X 18"W									1	
		7108-5-12.5	DRUM ASSY, 3/4" NPT, 5.5" X 12.5"W										1
	3	6329-1-1	BEARING, EPDM, .877" ID, CRANK SIDE	1	1	1	1	1	1	1	1	1	1
	4	6328-1-1	BEARING, EPDM, .877 ID, PLUMBING SIDE	1	1	1	1	1	1	1	1	1	
		6328-1-2	BEARING, EPDM, 1.058 ID, PLUMBING SIDE										1
	5	15711-1	PLATE, KEEPER, BEARING	2	2	2	2	2	2	2	2	2	2
	6	7105	RIVET, POP, ALUMINUM	4	4	4	4	4	4	4	4	4	4
	7	15719	KNOB, BLACK, PHENOLIC	1	1	1	1	1	1	1	1	1	1
	8	1935	SWIVEL, 3/8" NPT, CARBOXYLATED		1	1		1	1	1			
		433-FG-SS	SWIVEL, 3/8" NPT, NITRILE, FOOD GRADE, SS	1									
		439	SWIVEL, 1/2" NPT, CARBOXYLATED				1				1	1	
		426	SWIVEL, 3/4" NPT, CARBOXYLATED										1
22		7272-1	CRANK ARM ASSEMBLY	1	1	1	1	1	1	1	1	1	1
	9	7107	CRANK ARM	1	1	1	1	1	1	1	1	1	1
	10	6333	HANDLE, CRANK	1	1	1	1	1	1	1	1	1	1
	11	1621	BOLT, SHOULDER, 5/16-18	1	1	1	1	1	1	1	1	1	1
	12	111-1	NUT, LOCK, 5/16-18 (LOW PROFILE)	1	1	1	1	1	1	1	1	1	1
	13	381	HOSE CLAMP, #10	1	1	1		1	1	1			
		383	HOSE CLAMP, #12				1				1	1	
		384	HOSE CLAMP, #18										1
	14	245	SCREW, TRUSS HD, 10-32 X 3/8"	1	1	1	1	1	1	1	1	1	1
	15	130	NUT, KEPS, 10-32	1	1	1	1	1	1	1	1	1	1
	16	7146	BOLT, HEX, 1/4-20 X 2-1/4", GR 5	1	1	1	1	1	1	1	1	1	1
	17	7115	NIPPLE, 3/8-18 X CLOSE, SCH 80	1	1	1		1	1	1			
	18	7116	AXLE, PLUMBING, 1/2-14 COUPLING				1				1	1	
	19	7145	SPACER	2	2	2	2	2	2	2	2	2	1
	20	688	WASHER, FLAT, 1/4" SAE	1	1	1	1	1	1	1	1	1	1
	21	10925-5	NAMEPLATE, PRODUCT, STD DECAL	1	1	1	1	1	1	1	1	1	1

REVISION: N

ECO: 1785-6

DATE: 09/14/2001

NAME: J. KNOSALLA