

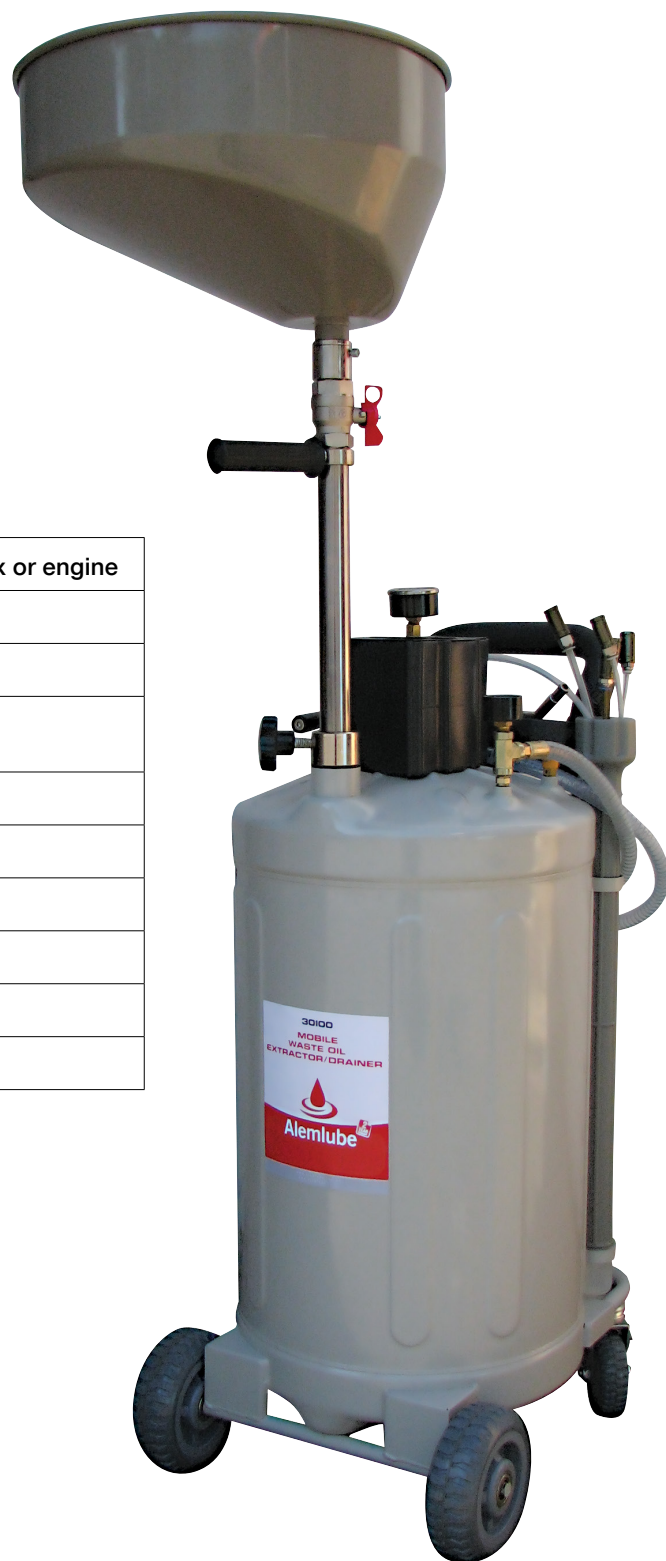


# OWNER'S TECHNICAL MANUAL

30100

## Mobile Waste Oil Drainer / Extractor

January 2021



### SPECIFICATIONS

Function	Collect waste oil from vehicle gear box or engine
Power	Compressed air
Air Consumption	About 200L/min
Air Inlet Pressure (for vacuum)	87~116PSI/6~8Bar
Oil ejection pressure	10~14PSI/0.7~1Bar
Vacuum Degree	0 ~ -14PSI/0~-1Bar
Tank Capacity	80L
Collect tray capacity	20L
Height	From 1250mm to 1890mm
Working Temperature	40~60°C (for engine oil)

NSW/ACT  
TEL: (02) 9677 1555  
FAX: (02) 9675 1155

QLD/PNG  
TEL: (07) 3204 9166  
FAX: (07) 3204 1224

VIC/TAS  
TEL: (03) 8787 8288  
FAX: (03) 8787 8266

WA  
TEL: (08) 9302 4199  
FAX: (08) 9303 2095

SA/NT  
TEL: (08) 8241 7111  
FAX: (08) 8241 7011

NZ  
TEL: (09) 447 1007  
FAX: (09) 447 1008



# OWNER'S TECHNICAL MANUAL

30100

## Mobile Waste Oil Drainer / Extractor

### GENERAL SAFETY REGULATIONS



**WARNING:** When using tool, basic safety precautions should always be followed to reduce the risk of personal injury and damage to equipment.

1. Keep work area clean. Cluttered areas invite injuries.
2. Observe work area conditions. Do not use machines or power tools in damp or wet locations. Don't expose to rain. Keep work area well lighted. Do not use electrically powered tools in the presence of flammable gases or liquids.
3. Keep children away. Children must never be allowed in the work area. Do not let them handle machines, tools or extension cords.
4. Store idle equipment. When not in use, tools must be stored in a dry location to inhibit rust. Always lock up tools and keep out of reach of children.
5. Avoid Unintentional Starting. Be sure the air pressure is in the off position when not in use and before making hose connection.
6. Stay alert. Watch what you are doing, use common sense. Do not operate any tool when you are tired.
7. Check for damaged parts. Before using any tool, any part that appears damaged should be carefully checked to determine that it would operate properly and perform its intended function. Check for alignment and binding of moving parts; any broken parts or mounting fixtures; and any other condition that may affect proper operation. Any part that is damaged should be properly repaired or replaced by a qualified technician. Do not use the tool if any control or switch does not operate properly.
8. Replacement parts and accessories. When servicing, use only identical replacement parts. Use of any other parts will void the warranty. Only use accessories intended for use with this tool.
9. Do not operate tool if under the influence of alcohol or drugs. Read warning labels if taking prescription medicine to determine if your judgment or reflexes are impaired while taking drugs. If there is any doubt, do not operate the tool.
10. Maintenance. For your safety, service and maintenance should be performed regularly by a qualified technician.

**Note:** Performance of this tool may vary depending on variations in air pressure and compressor capacity.

### SPECIFIC SAFETY RULES

This equipment is designed be operated by qualified personnel. It should only be operated after reading and understanding the safety warnings and operating procedures in this instruction manual.

1. Do not smoke near this equipment.
2. Use in a well ventilated area.
3. When leaks are found in the equipment or hoses, immediately turn the air pressure off and repair the leaks.
4. Do not exceed the recommended operating air pressure. This could damage equipment.
5. Keep a type ABC fire extinguisher nearby in case of fires.
6. Always protect your skin and eyes from contact with oil and solvents.
7. Do not start engine during the time of oil extraction. Otherwise it will cause the damage of extraction probes and injuries of people.
8. Be careful for the oil extracted out from the vehicle, as temperature of oil is high, always between 40~60°C.
9. Used oil should be properly disposed or recycled. Please contact with your local waste liquid/solid authority for information on recycling.
10. Can be used with other mechanical engine oil, lubricants as well as temporary storage. Brake fluid, gasoline, diesel and other liquid contains methanol and ketones or flammable is strictly prohibited.

NSW/ACT

TEL: (02) 9677 1555  
FAX: (02) 9675 1155

QLD/PNG

TEL: (07) 3204 9166  
FAX: (07) 3204 1224

VIC/TAS

TEL: (03) 8787 8288  
FAX: (03) 8787 8266

WA

TEL: (08) 9302 4199  
FAX: (08) 9303 2095

SA/NT

TEL: (08) 8241 7111  
FAX: (08) 8241 7011

NZ

TEL: (09) 447 1007  
FAX: (09) 447 1008



# OWNER'S TECHNICAL MANUAL

30100

## Mobile Waste Oil Drainer / Extractor

### WARNING



1. Please read this Manual Book carefully and fully understand it before operation.
2. In order to avoid the aging of the rubber parts, do not expose the machine in the sunshine; do not deposit the machine in a moist place, it must be stored in a dry place with good ventilation. Because of the multi functions, the machine is equipped with many accessories, it must be cared by a special technician.
3. This machine has been tested strictly before leaving our factory, but the operator must obey our operation regulations. Please do not try to take apart and repair it by yourself, if you meet with any faults, please contact our local distributors or our company.
4. After using, always cut off connection with air compressor and recover all the pipe to its original place.
5. Do not lower than the min. air inlet required pressure. Do not exceed the max. air inlet required pressure.
6. Do not dismantle this machine by unqualified or unauthorized personnel. Otherwise will avoid warranty.
7. If you have any inquiries, please contact our local distributors or service offices.
8. Air inlet & Oil drain: Ball valve must be closed operation confirmation.

### TRANSPORT AND UNPACKING

When unpacking, check to make sure that all the parts are included. Refer to the Assembly section, and the Assembly Drawing and Parts List at the end of this manual.

For transport of the packaged product, refer to (Fig.1).

Once the product has been unpacked, check that the instructions manual is there, that the material is complete and there are no parts which have been visibly damaged. If any parts are missing or broken, please contact with local distributor as soon as possible. Remove the contents of the packages and place them in a storage area inaccessible to children or animals.

In the package, you will find:

1. One Complete Oil Tank
2. One Oil Collecting Bowl/tray
3. One Strainer
4. Probes 6 pcs with sleeve
5. User's Manual

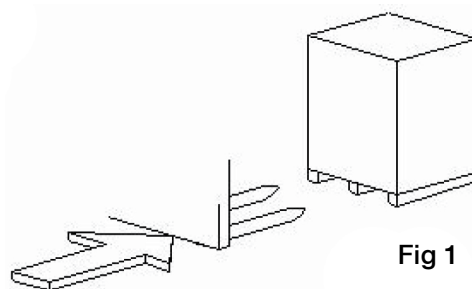


Fig 1

### ASSEMBLY INSTRUCTIONS

#### Oil Tray (FIG 2)

1. Open the carton to take out the oil tray, check to see if there is any damage. If so, please contact with your distributor immediately.
2. Pull out the lift pole and install the oil tray on the lift pole.
3. Install and fix the oil tray, strainer together.
4. Ensure the lift pole is perpendicular to the equipment.
5. Tighten the screw.

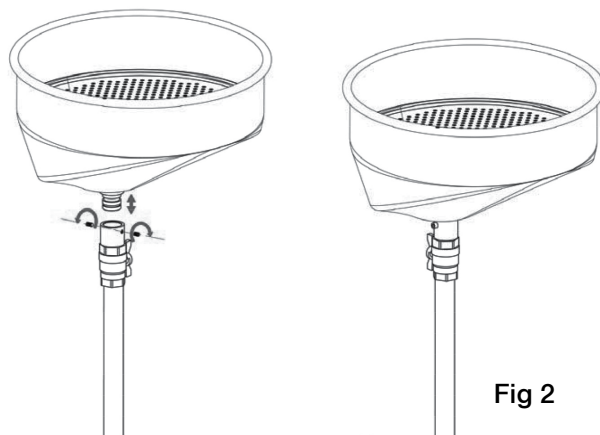


Fig 2

### OPERATION INSTRUCTIONS

#### Oil Collections (FIG 3)

1. Lift the vehicle up, then Push the machine to the place right under the engine oil outlet.
2. Turn on ball valve at first.
3. Open the ball valve under the oil tray and unscrew the oil drain plug of engine.
4. Then oil transferring from oil tray to oil tank.
5. Screw on the drain plug of vehicle.

NSW/ACT

TEL: (02) 9677 1555  
FAX: (02) 9675 1155

QLD/PNG

TEL: (07) 3204 9166  
FAX: (07) 3204 1224

VIC/TAS

TEL: (03) 8787 8288  
FAX: (03) 8787 8266

WA

TEL: (08) 9302 4199  
FAX: (08) 9303 2095

SA/NT

TEL: (08) 8241 7111  
FAX: (08) 8241 7011

NZ

TEL: (09) 447 1007  
FAX: (09) 447 1008

## OPERATION INSTRUCTIONS

### Oil Collections (FIG 3)

1. Lift the vehicle up, then Push the machine to the place right under the engine oil outlet.
2. Turn on ball valve at first.
3. Open the ball valve under the oil tray and unscrew the oil drain plug of engine.
4. Then oil transferring from oil tray to oil tank.
5. Screw on the drain plug of vehicle.

### VACUUM GENERATION (FIG 4)

Operating air pressure: 87~116PSI /6~8 bar Consumption of air: about 200L/min.

1. Turn off all valves before vacuuming.
2. Connect the compressed air to the machine air inlet 1.
3. Open the ball valve 3. (FIG.4).
4. Gradually turn on the air inlet valve(which equipped by customer himself) for vacuum generation.
5. When finger reaching to the MAX. area on the gauge 2 (red area), turn off the air inlet valve (estimated time for vacuum generation within 4~5 minutes) (If continuously extraction required, please leave it open)
6. Now it is ready for extraction

**Tips:** Benefits for gradually and slowly turn on air inlet valve for reducing of air-consumption and a quicker speed for vacuum-generation.

### OIL EXTRACTION (FIG 5)

1. After vacuum, choose suitable probe (which is the largest diameter one can be inserted into the engine) and tightly connect it to the extraction pipe connector.
2. Insert the end of the probe into the engine oil inlet hole of the engine.
3. Turn on the ball valve 6.
4. After finish extraction, turn off the ball valve 6 on the extraction pipe.

**Note:** With the extraction of hot oil, do not exceed the maximum temperature of 60°C.

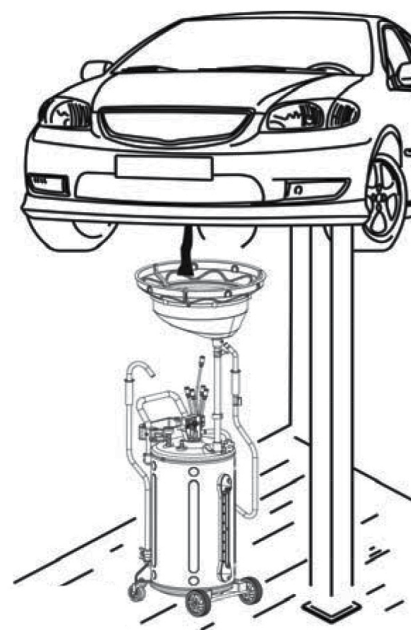


Fig 3

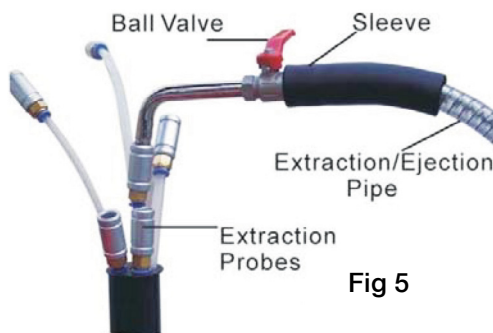


Fig 5



Fig 4

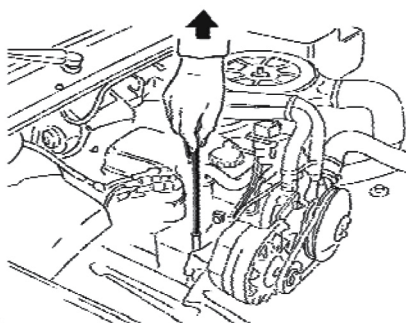


Fig 6

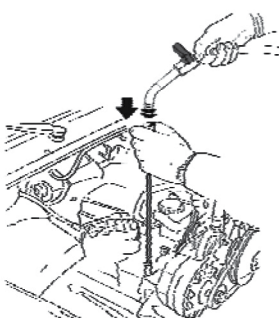


Fig 7

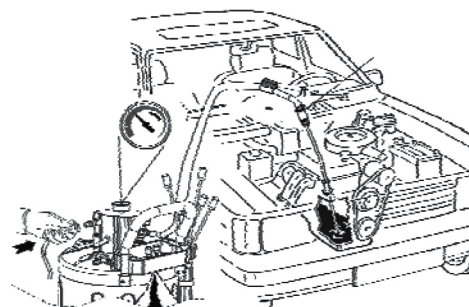


Fig 8





# OWNER'S TECHNICAL MANUAL

30100

## Mobile Waste Oil Drainer / Extractor

### EJECTION

#### Tank Emptying (FIG 9 & FIG 10)

When the oil retained in tank is near full (FIG.10), you need to eject oil out into a disposal tank and resolve the waste oil accordingly to the instruction of local government.

1. Turn off all the valves.
2. Hold the ejection hook and insert it into the external disposal tank.
3. Connect the air compressor with the air inlet 4.
4. Turn on wing valve 5 for oil ejection.
5. Turn on the mini ball valve 4 gradually, adding tank pressure, turn off air compressor when pressure reach to desired pressure. (The safety valve will automatically release pressure when the tank pressure reach about 1.0 bar/14PSI, turn off the mini ball valve 4 immediately and quickly drop the tank pressure below 1.0bar/14PSI).
6. Cut off air source after ejection, empty tank pressure and turn off all valves.

**Note:** Discharge Residual oil from Residual oil cup when it reaches STOP sign. (FIG.10)

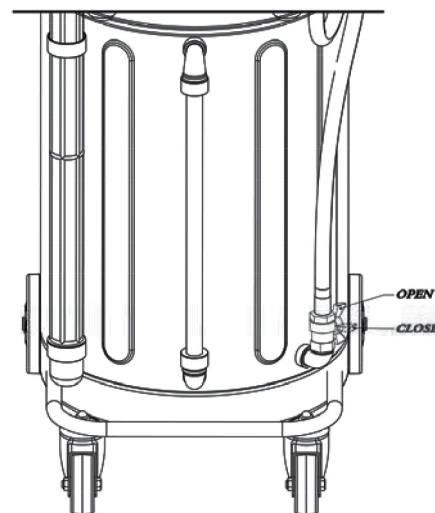


Fig 9

### WARNING

1. Please hold the end of Ejection Hook to avoid waste oil spattering out, cause an injury of eye, dirty of clothes.
2. Before disconnect extraction/ejection tube with fast couple (male), making sure no any pressure existed in the tank. Otherwise, oil will spray out.

### TROUBLE SHOOTING

1. Vacuum gauge don't work
  - Check the air pressure: standard air pressure through air inlet valve should between 87~116PSI /6~8bar; Air consumption is about 200L/Min.
  - Make sure all the valves are on the correct place.
  - Check vacuum operator-to-tank seal.
2. There is a figure showed on the vacuum gauge but the machine don't working and extracting
  - Check extraction hose-to-probe seal.
  - Temperature of waste oil is too low or not? (ordinary temperature of oil should between 40~60℃.)
  - Extract grease oil or other oil with high density, which is, avoided.
  - Make sure that extraction pipe open.
  - Make sure that extraction pipe do not block off and probe don't touch the bottom of tank.
  - Make sure that the silencer haven't been blocked.

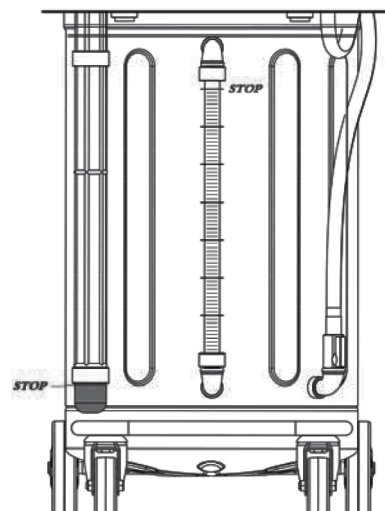


Fig 10

### INSPECTION, MAINTENANCE & CLEANING

1. Before each use, inspect the general condition of the machine Check for loose screws, air and oil leakage, misalignment or binding of moving parts, cracked or broken parts, and any other condition that may affect its safe operation. If abnormal noise or vibration occurs, have the problem corrected before further use. Do not use damaged equipment.
2. Periodically recheck all hoses, valves, nuts, bolts, and screws for tightness.
3. For a long time to use, please check the adapter/ seal ring of the adaptors for leakage.
4. It's necessary to drain the waste oil as soon as possible in case of the corroding of tank.
5. Store in a clean and dry location.
6. All maintenance and repairs must be completed by a qualified technician.

NSW/ACT

TEL: (02) 9677 1555  
FAX: (02) 9675 1155

QLD/PNG

TEL: (07) 3204 9166  
FAX: (07) 3204 1224

VIC/TAS

TEL: (03) 8787 8288  
FAX: (03) 8787 8266

WA

TEL: (08) 9302 4199  
FAX: (08) 9303 2095

SA/NT

TEL: (08) 8241 7111  
FAX: (08) 8241 7011

NZ

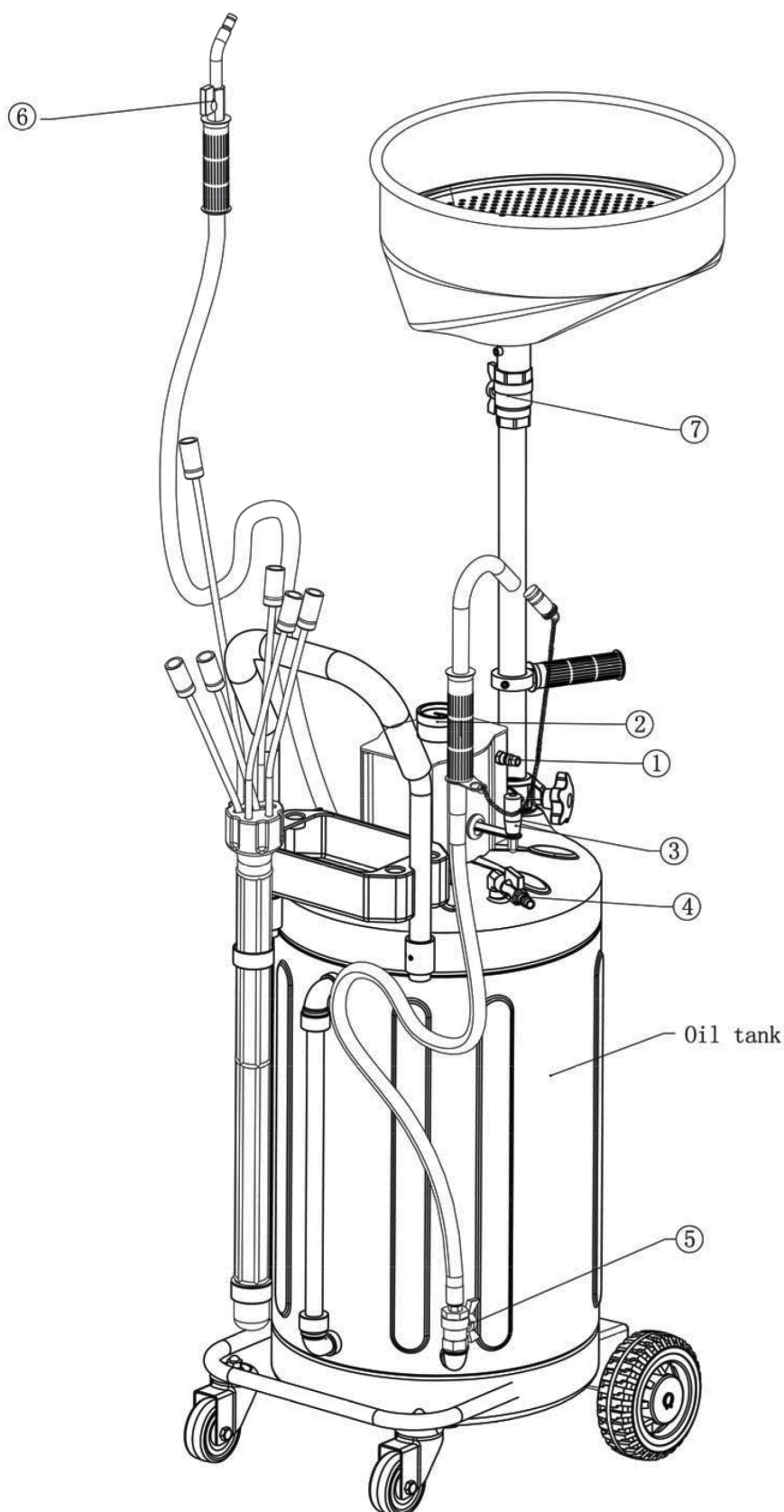
TEL: (09) 447 1007  
FAX: (09) 447 1008



# OWNER'S TECHNICAL MANUAL

30100

## Mobile Waste Oil Drainer / Extractor



NSW/ACT  
TEL: (02) 9677 1555  
FAX: (02) 9675 1155

QLD/PNG  
TEL: (07) 3204 9166  
FAX: (07) 3204 1224

VIC/TAS  
TEL: (03) 8787 8288  
FAX: (03) 8787 8266

WA  
TEL: (08) 9302 4199  
FAX: (08) 9303 2095

SA/NT  
TEL: (08) 8241 7111  
FAX: (08) 8241 7011

NZ  
TEL: (09) 447 1007  
FAX: (09) 447 1008



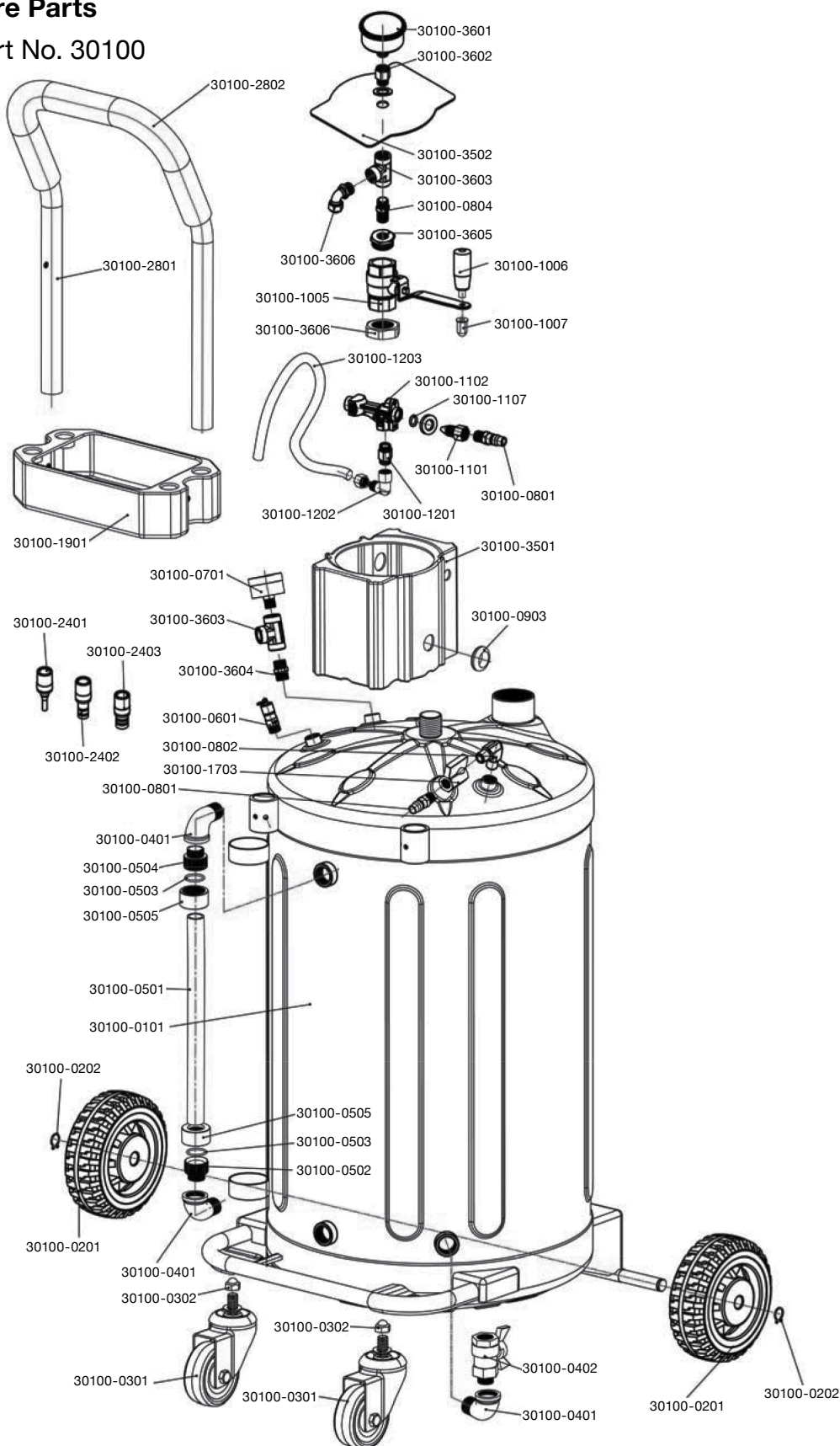
# OWNER'S TECHNICAL MANUAL

30100

## Mobile Waste Oil Drainer / Extractor

### Ordering Spare Parts

#### Parts List – Part No. 30100



NSW/ACT  
TEL: (02) 9677 1555  
FAX: (02) 9675 1155

QLD/PNG  
TEL: (07) 3204 9166  
FAX: (07) 3204 1224

VIC/TAS  
TEL: (03) 8787 8288  
FAX: (03) 8787 8266

WA  
TEL: (08) 9302 4199  
FAX: (08) 9303 2095

SA/NT  
TEL: (08) 8241 7111  
FAX: (08) 8241 7011

NZ  
TEL: (09) 447 1007  
FAX: (09) 447 1008



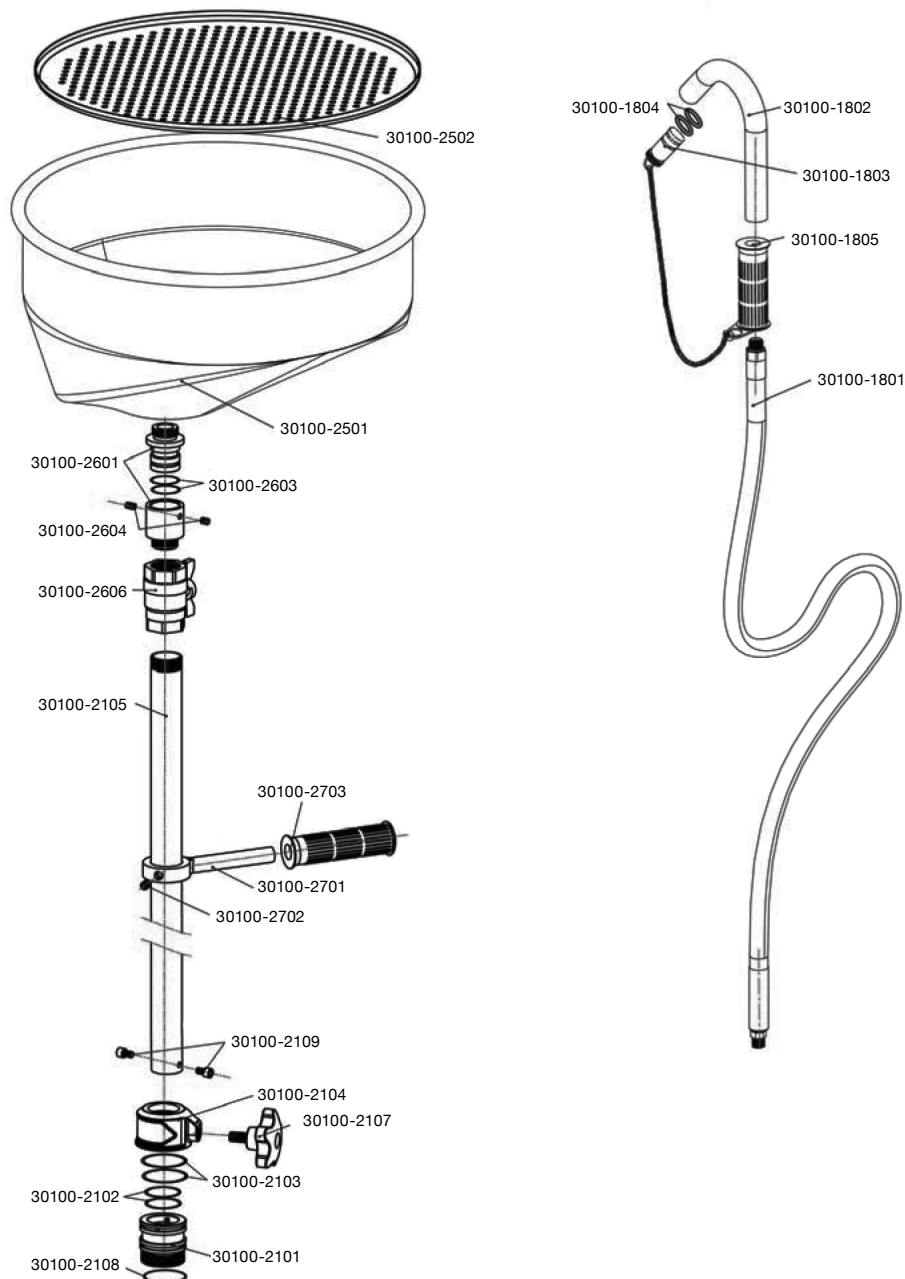
# OWNER'S TECHNICAL MANUAL

30100

## Mobile Waste Oil Drainer / Extractor

### Ordering Spare Parts

Parts List – Part No. 30100



NSW/ACT  
TEL: (02) 9677 1555  
FAX: (02) 9675 1155

QLD/PNG  
TEL: (07) 3204 9166  
FAX: (07) 3204 1224

VIC/TAS  
TEL: (03) 8787 8288  
FAX: (03) 8787 8266

WA  
TEL: (08) 9302 4199  
FAX: (08) 9303 2095

SA/NT  
TEL: (08) 8241 7111  
FAX: (08) 8241 7011

NZ  
TEL: (09) 447 1007  
FAX: (09) 447 1008





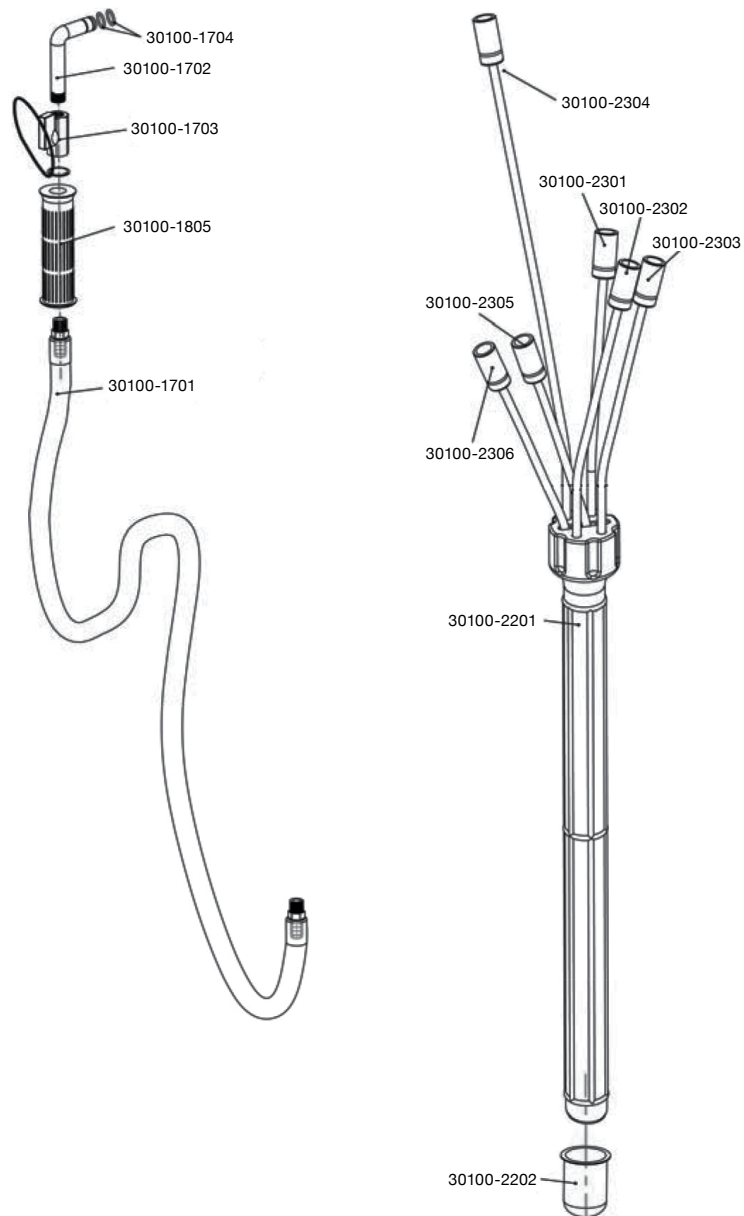
# OWNER'S TECHNICAL MANUAL

30100

## Mobile Waste Oil Drainer / Extractor

### Ordering Spare Parts

Parts List – Part No. 30100



NSW/ACT

TEL: (02) 9677 1555

FAX: (02) 9675 1155

QLD/PNG

TEL: (07) 3204 9166

FAX: (07) 3204 1224

VIC/TAS

TEL: (03) 8787 8288

FAX: (03) 8787 8266

WA

TEL: (08) 9302 4199

FAX: (08) 9303 2095

SA/NT

TEL: (08) 8241 7111

FAX: (08) 8241 7011

NZ

TEL: (09) 447 1007

FAX: (09) 447 1008



# OWNER'S TECHNICAL MANUAL

## Mobile Waste Oil Drainer / Extractor

30100

Part Number	Description
30100-0101	Tank
30100-0201	Directional Wheel
30100-0202	Snap Spring
30100-0301	Universal Wheel
30100-0302	Nut
30100-0401	Cast-Iron Bend
30100-0402	Butterfly Valve
30100-0501	Level Pipe
30100-0502	Fixing Sleeve
30100-0503	Seal Ring
30100-0504	Fixing Sleeve (Screw)
30100-0505	Fixing Sleeve (Nut)
30100-0601	Safe Valve
30100-0701	Pressure Gauge
30100-0801	Wind Nozzle
30100-0802	Elbow Connector
30100-0903	Bushings
30100-1005	Ball Valve
30100-1006	Hand Lever
30100-1007	Nut
30100-1101	Bolt
30100-1102	Vacuum Generator
30100-0804	Straight Connector
30100-1107	Seal Ring
30100-1201	Bead Valve
30100-1202	Elbow Connector
30100-1203	PU Hose
30100-1901	Tool Box

Part Number	Description
30100-2401	VW Connector
30100-2402	BMW Connector
30100-2403	BENZ Connector
30100-2801	Handrail
30100-2802	Protection Sheath
30100-3501	Middle Sleeve
30100-3502	Metal Cover Plate
30100-3601	Vacuum Gauge
30100-3602	Connector
30100-3603	T-Connector
30100-3604	Connector
30100-3605	Connector
30100-3606	Nut
30100-3607	Elbow Connector
30100-2101	Seat
30100-2102	Seal Ring
30100-2103	Seal Ring
30100-2104	Brake Sleeve
30100-2105	Lift Pole
30100-2106	Ball Valve
30100-2107	Knob
30100-2108	Seal Ring
30100-2109	Screw
30100-2501	Oil Tray
30100-2502	Strainer
30100-2601	Connector
30100-2603	Seal Ring
30100-2604	Screw

Part Number	Description
30100-2701	Easy Handle
30100-2702	Screw
30100-2703	Handle Sleeve
30100-1801	Oil Hose
30100-1802	Oil Drain Hook
30100-1803	Stopper
30100-1804	Seal Ring
30100-1805	Handle Sleeve
30100-1805A	Oil Drain Wose with Hook
30100-1701	Extraction Oil Hose
30100-1702	Oil Extraction Hook
30100-1703	Mini Ball Valve
30100-1704	Seal Ring
30100-1805	Handle Sleeve
30100-512	Oil Suction Hose with Hook
30100-2201	Probe Sleeve
30100-2202	Oil Cup
30100-2301	Oil Extraction Probe
30100-2302	Oil Extraction Probe
30100-2303	Oil Extraction Probe
30100-2304	Oil Extraction Probe
30100-2305	Oil Extraction Probe
30100-2306	Oil Extraction Probe

NSW/ACT  
TEL: (02) 9677 1555  
FAX: (02) 9675 1155

QLD/PNG  
TEL: (07) 3204 9166  
FAX: (07) 3204 1224

VIC/TAS  
TEL: (03) 8787 8288  
FAX: (03) 8787 8266

WA  
TEL: (08) 9302 4199  
FAX: (08) 9303 2095

SA/NT  
TEL: (08) 8241 7111  
FAX: (08) 8241 7011

NZ  
TEL: (09) 447 1007  
FAX: (09) 447 1008