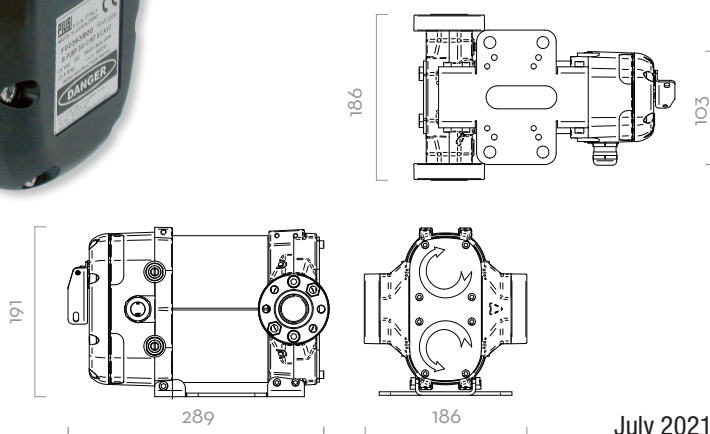
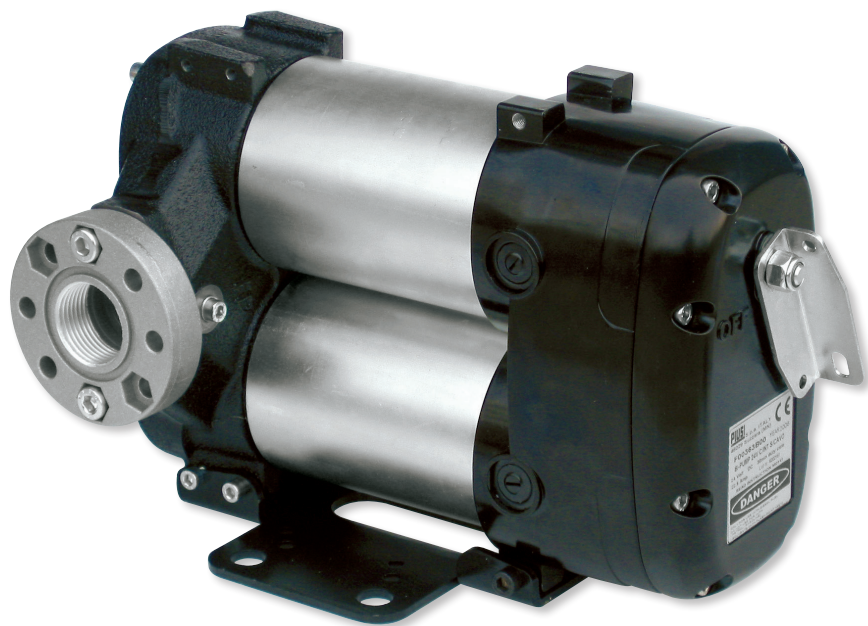


52005-3AC

Piusi 24V High Flow Diesel Transfer Pump



July 2021

The Piusi 52005-3AC 24V High Flow Diesel Transfer Pump is designed for use with both diesel dispensers and fixed fuel transfer systems.

The 52005-3AC is a powerful bi-pump that is reliable, heavy duty, compact in size and is designed for high flow diesel transfer and mobile refuelling up to 85L/min.

Supplied standard with 4m cable and clamps, the 52005-3AC is easy to install, incorporates an on/off switch and operates safely with a duty cycle of 30 minutes on & 30 minutes off.

Essentially, the 52005-3AC is a combination of two BP3000 self-priming, rotary vane, positive displacement 24V diesel transfer pumps providing a greater flow rate. Thanks to its refilling speed and its low voltage, this Piusi diesel pump is designed for refuelling plant equipment and large agricultural vehicles in off-road applications where mains power may be unavailable.

The Piusi 52005-3AC 24V High Flow Diesel Transfer Pump is the ideal dispensing pump for on demand, on site applications ensuring plant and equipment a seamless flow of productivity.

SPECIFICATIONS, FEATURES AND BENEFITS

- Flow rates of up to 85L/min
- 1" BSP(f) flanged connections
- Compact sturdy structure
- Heavy duty reliability
- 24V DC / 500 watt power
- Supplied standard with 4m cable and clamps
- Duty cycle of 30 mins on / 30 mins off
- Total lift of 4m with non-return valve
- Total lift of 2m without non-return valve
- IP55 protection rating
- On demand refuelling
- Weight of 10kg
- Dimensions in mm as above
- 12V option also available, 52004-3AC

