

### Description

The 20084 bonnet light utilises LED technology to provide you with incredible brightness via 120 LED lights with energy efficiency when working on your vehicles engine. The flexible attachment clamps can be extended from a 97cm minimum to a maximum of 165cm ensuring it can be used on a large range of makes and models of vehicles. The shatterproof polycarbonate lens combined with LED technology ensures longevity of life in your tough workshop environment. Comes complete with an 8 metre long 240v cable.

### Specifications

Uses:	Suits most car bonnets for illuminating car engines for maintenance in a typical workshop
N.o. of LED lights:	120
Input Voltage / Power:	240V AC 50HZ / 12 watts
Weight / Length:	2.8 kg's / Inner packing dimensions: 124x11x11cm
Extensions size:	97cm / 40" to 165cm / 64"

### Instructions

The mounting bracket has an extension function (97cm/40" to 165cm/64") which allows it to fit most kinds of bonnets.

Easy adjustment of the light angle offers optimum working conditions.

The unit comes complete with an ON/OFF switch.

### Safety Precaution

Study, understand and follow all instructions provided with this product.

Avoid staring directly into the lights LED beam.

Always wear appropriate safety equipment and clothing when using this product.

Always select the correct accessories of the correct size and design for the job that you are attempting to perform.

Always work in a clean, safe, well-lit, organised and adequately equipped area.

Do not begin repairs without assurance that the vehicle is in a secure position, and will not move during service work.

### Warning

Do not expose the 20084 light to any form of liquids including, but not limited to, water, rain, oil, diesel, ATF, coolant etc.

Risk of an electric shock of 240V AC at terminal plug is present. Do not probe terminals.

Do not attempt to charge if any part of the unit, light or cord is damaged. Replace immediately.

Do not use with an extension cord.

Keep unit away from any flammable fluids or an explosive area.

To avoid accidental tripping and/or damage to the electrical cable, make sure that the cable is located in an area where it will not be walked on or over.

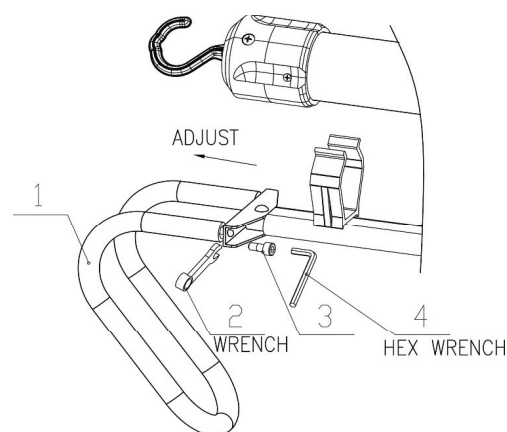
Do not pull the cable to unplug, pull out via the plug only.

### Unpacking

When unpacking, check the parts diagram and parts list to ensure all parts are included. If any parts are missing or damaged, please call your local distributor immediately.



### How to adjust extension clamps



NSW

TEL: (02) 9939 0711

FAX: (02) 9939 0411

QLD/PNG

TEL: (07) 3889 8480

FAX: (07) 3889 8490

VIC/TAS

TEL: (03) 8787 8288

FAX: (03) 8787 8266

WA

TEL: (08) 9209 3066

FAX: (08) 9209 3933

SA/NT

TEL: (08) 8241 7111

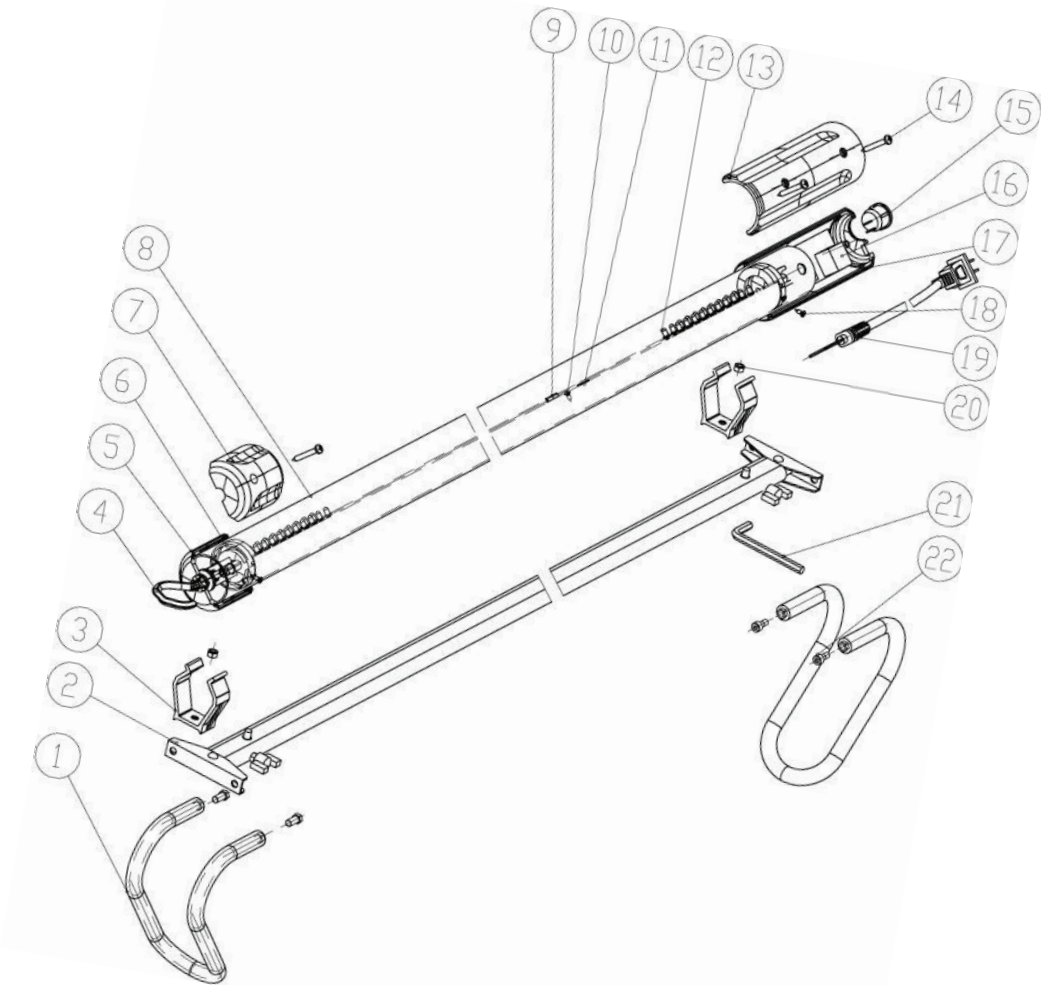
FAX: (08) 8241 7011

NZ

TEL: (09) 447 1007

FAX: (09) 447 1008

# Parts and Drawing Breakdown For 20084



## Ordering Spare Parts

### Parts List – Part No. 20084

ITEM	PART NO	DESCRIPTION	QTY
1	20084-1	Hood hook assembly	1
2	20084-2	Bracket assembly	1
3	20084-3	Light position unit	1
4	20084-4	Light hook	1
5	20084-5	Cap bottom cover	1
6	20084-6	LED PCB position unit assembly	1
7	20084-7	Cap top cover	1
8	20084-8	Lens tube	1
9	20084-9	LED PCB support unit	1
10	20084-10	Screw, ST2.9*13	1
11	20084-11	Foam unit	1
12	20084-12	LED PCB assembly	1
13	20084-13	Handle top cover	1
14	20084-14	Screw, ST4.2*32	1
15	20084-15	Switch	1
16	20084-16	Power PCB assembly	1
17	20084-17	Handle bottom cover	1
18	20084-18	Screw, ST2.9*9.5	1
19	20084-19	Power Cord with Plug	1
20	20084-20	Nut, M6	1
21	20084-21	Hex key	1
22	20084-22	Screw, M6	1

NSW  
TEL: (02) 9939 0711  
FAX: (02) 9939 0411

QLD/PNG  
TEL: (07) 3889 8480  
FAX: (07) 3889 8490

VIC/TAS  
TEL: (03) 8787 8288  
FAX: (03) 8787 8266

WA  
TEL: (08) 9209 3066  
FAX: (08) 9209 3933

SA/NT  
TEL: (08) 8241 7111  
FAX: (08) 8241 7011

NZ  
TEL: (09) 447 1007  
FAX: (09) 447 1008