

#### Description

The Alemlube EL Series O300130 5:1 Air Operated Oil Stub Pump is ideal for dispensing oil with a maximum viscosity of SAE240.

An excellent value for money proposition, the EL Series O300130 gives you the opportunity to upgrade from standard hand operated oil drum pumps to a pneumatic solution.

Delivering up to 18L/min the O300130 5:1 ratio oil stub pump is suitable for dispensing motor oil, synthetic oil, hydraulic oil, gear oil and automatic transmission fluid.

Smart design with fewer working parts effectively means less pump wear & tear and facilitates a lower cost of ownership.

Manufactured with efficiency and reliability in mind, the O300130 5:1 ratio oil pump is well designed, affordable and is supported by readily available spare parts.

#### Technical Details

Item No.	O300130
Compression Ratio	5:1
Recommended Operating Pressure	30-150psi (2-10bar)
Maximum Pressure	750psi (50bar)
Air Consumption	2.8cfm @ 80psi
Maximum Flow Rate	18L/min
Tube Diameter	42mm
Suction Tube Length	270mm
Air Inlet Connection	1/4" Quick Plug
Oil Delivery Connection	1/2" BSP (m)
Maximum Viscosity Oil Delivered	SAE 240
Temperature Oil Delivered	-10~40°C
Noise Level	82dB



## Safety Warning and Precautions

**WARNING:** The warnings, cautions, and instructions discussed in this instruction manual cannot cover all possible conditions or situations that could occur. It must be understood by the operator that common sense and caution are factors that cannot be built into this product, but must be supplied by the operator.

1. Keep the work area clean and dry. Damp or wet work areas can result in injury.
2. Keep children away from work area. Do not allow children to handle this product.
3. Use the right tool for the job. Do not attempt to force small equipment to do the work of larger industrial equipment. There are certain applications for which this equipment was designed. It will do the job better and more safely at the capacity for which it was intended. Do not modify this equipment, and do not use this equipment for a purpose for which it Was not intended.
4. Check for damaged parts. Before using this product, carefully check that it will operate properly and perform its intended function. Check for damaged parts and any other conditions that may affect the operation of this product. Replace damaged or worn parts immediately.
5. Do not overreach. Keep proper footing and balance at all times to prevent tripping, falling, back injury, etc.
6. DO NOT use the equipment when tired or under the influence of drugs, alcohol, or medication. A moment of inattention while operating this equipment may result in serious personal injury.

## Product Specific Safety Precautions

**When the pump is connected to the compressed air supply:**

1. The compressed air must be filtered to avoid dust and moisture entering the pump.
2. The maximum compressed air pressure must not exceed 1.0Mpa/150psi.
3. To deliver oil open the tap, delivery stops when the tap is closed but the whole system remains under pressure.
4. Always cut off the air supply after use so that oil can't leak out in case one of the pump's components should break.
5. Use only original spare parts in case the pump has to be repaired or its components have to be replaced.
6. Empty all the oil from the pump in case it has to be disposed of.
7. When not in use, turn off compressed air to stop the pump.
8. Do not use the pump near open flames. Do not smoke during this operation.
9. Wear oil-proof gloves.
10. Do not throw the oil away. Used oil has to be disposed of according to national environmental regulations.
11. The pump can be used only to deliver lubricants, used oil or antifreeze liquids.  
Do not use the pump for any other substance.

Read the following precautions and instructions before you begin assembly or using.

Failure to comply with these instructions could result in personal injury or property damage.

Keep these instructions in a convenient location for future reference.

## Important Notes

- The guarantee will be void if the pump has been altered in any way.
- It is recommended that a filter, regulator and lubricator should always be used to maximise the working life of the pump, our product O300160 is ideal for this pump.
- Please use PTFE tape or thread sealant when connecting the hose to the outlet of the pump.

## Trouble Shooting

Problem	Possible Causes	Solutions
The pump doesn't work	1. Insufficient air 2. Air obstruction	1. Increase air pressure 2. Clear air passage 3. Change voltage
	1. The intake valve is closed 2. The intake valve is blocked	1. Open the intake valve 2. Clean the intake valve
	A blockage in a hose, valve, or other device	Release pressure & clean
	Damage to Screw (5) or plate (8)	Assess damage, repair or replace Screw (5) or plate (8)
	Insufficient oil supply	Replace oil drum to ensure adequate oil supply
Leak of pneumatic device	Damage to Piston (7) or gasket (9) or spring (10)	Assess damage, repair or replace Piston (7) or gasket (9) or spring (10)
The pump is unstable	Insufficient oil supply	Replace oil drum to ensure adequate oil supply
	O-Ring (3) Seal (16) (27) (29) (35) damage	Change Corresponding O-Ring or seal
	Tube (38) (39) damage	Change tube (38) (39)
The pump can work, but the output flow is low	Piston (7) wear	Change piston (7)
	O-Ring (3) Seal (16) (27) (29) (35) damage	O-Ring (3) Seal (16) (27) (29) (35) damage
	A blockage in a hose, valve	Release pressure & clean components
Oil leaks through the air exhaust	Silencer is dirty or damaged	Replace damaged elements

**If the pump has anything wrong, please contact Alemlube.**

**We do not recommend that the customer repairs the pump themselves.**

## Storage & Maintenance

Pumps are delivered in appropriate carton boxes. Packaging material should be properly disposed.

Handling and storage of the new pump does not require any special procedures.

However after the pump has been used, empty the used oil in the suction tube into an appropriate container. This is done by overturning the pump.

The dust in compressed air can slow down and even block the motor cylinder.

The following steps may prevent this from happening:

1. Let in 50 gram of Vaseline oil or other lubricator from the air inlet hole weekly, operate the pump for several minutes after having been lubricated.
2. Turn on the pump for several minutes until moving parts are fully lubricated.
3. You may repeat the above operation if necessary.
4. The above steps should be carried out on a weekly basis.

For the pumps that are attached with compressed air treatment equipment, please empty the water retained in the reservoir of the filter-purger frequently.

For the pumps that are attached with a lubricator, please pay close attention to the lubricator's oil level and refill with SAE 20, SAE 30 or antifreeze oil for extreme conditions when necessary.

**NOTE:** The user should perform only routine maintenance operations (such as filters, silencers, cleaning...) with the pump in order not to damage it or compromise its safety. Contact Alemlube when the pump needs further maintenance.

## How to Use

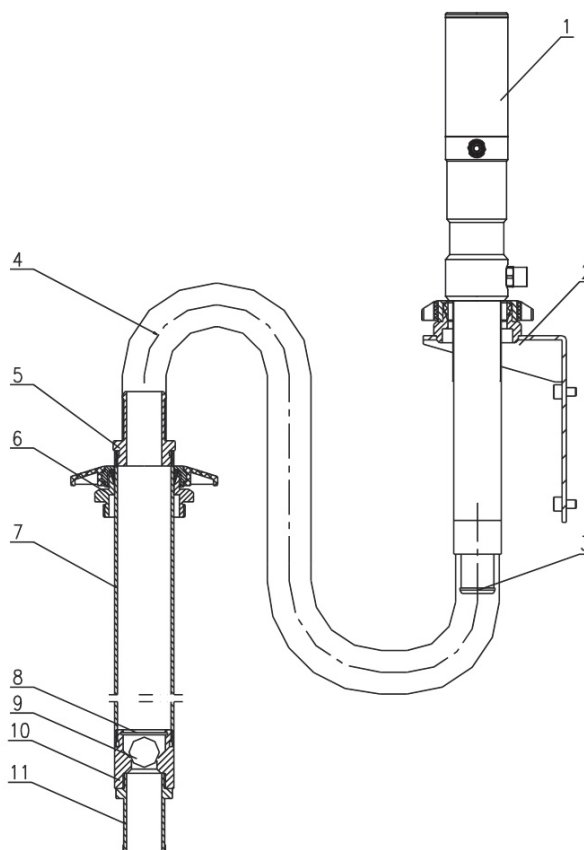
### Directly fit the pump into the Drum.

1. Insert the suction tube of pump into the drum and secure with the ring nut. It is suitable for commercial drums with a 57mm diameter hole and with threading 2" BSP
2. Fit an oil delivery tube for the oil outlet using only high quality tubes – normally 1/2", according to DIN-SAE norms, by means of a 1/2" BSP threading fitting.
3. Connect the delivery tube with the delivery pistol using suitable pipe fittings.
4. Air inlet connection is with a 1/4" quick plug (or 1/4" NPT female) in all versions. Compressed air connection (to be supplied by the customer) should be done using a suitable tube.
5. A pressure regulator is used to keep the pump's working pressure at the best possible level (maximum 5-10 bar) between the pump and the compressed air line
6. The cut-off switch can enable the operator to stop the pump at any given moment by cutting the air supply off between the pump and the compressed air line

## Wall Installed

### Part List

Part No.	Description	Quantity
1	Oil Pump	1
2	Wall Bracket	1
3	Pump Adapter	1
4	Flexible Suction Hose	1
5	Suction Hose Adapter	1
6	Bung Adapter	1
7	Rigid Suction Tube	1
8	Spring Circlip	1
9	Ball	1
10	Valve Seat	1
11	Filter	1



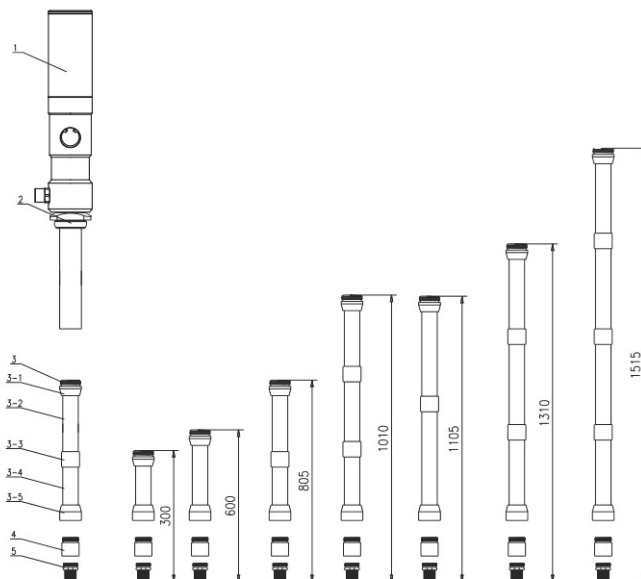
### Proceed as follows:

1. Secure the bracket to the wall using the dowels at about 1,200mm height appropriate for the tank's dimensions. Make sure that the wall is solid and thick enough for the dowels. Do not interfere with hydraulic tubes or electric lines.
2. Secure the pump to the bracket (2)
3. Connect the flexible suction tube (4) to the pump using the clamp provided.
4. Connect the rigid suction (7) to the end of the flexible suction tube (4) using the elastic clamp provided
5. Place the bung adapter (6) into the drum hole.
6. Place the rigid suction tube (7) into the pump and secure it in place.

#### Extension Transfer

##### Part List

Part No.	Description	Quantity
1	Oil Pump	1
2	Bung Adapter	1
3-1	Top Connection	1
3-2	Extension500mmTube	1
3-3	Extension Sleeve	1
3-4	Extension200mmTube	1
3-5	Foot Connection	1
4	Foot Valve	1
5	Filter	1



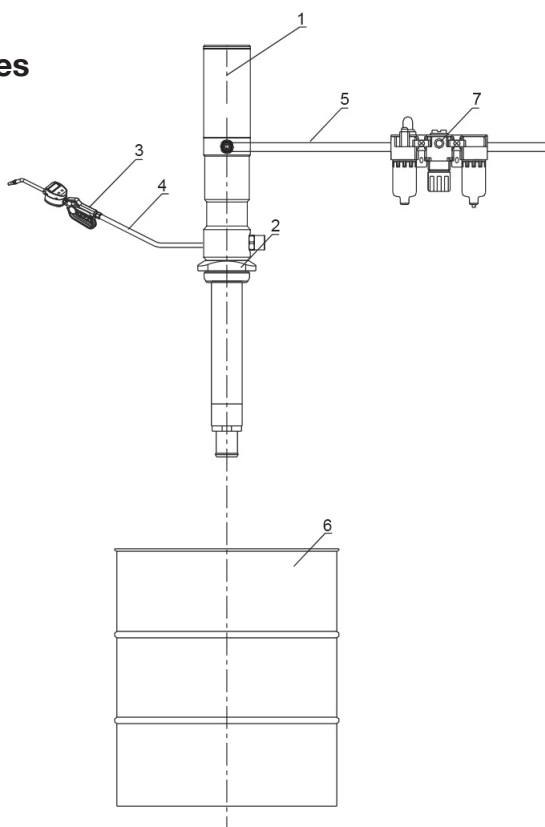
#### Proceed as follows:

1. Depending on the length of the suction tube the desired extension length can be realised by using the modular extension elements (See the examples given above)
2. Example of possible application to pump with drum or rigid suction tube for obtaining personalised lengths according to needs.
3. Remove filter and foot valve from the stub pump, screw the extension tube on, then screw filter and foot valve onto the extension tube.

#### Connecting the Pump with Other Accessories

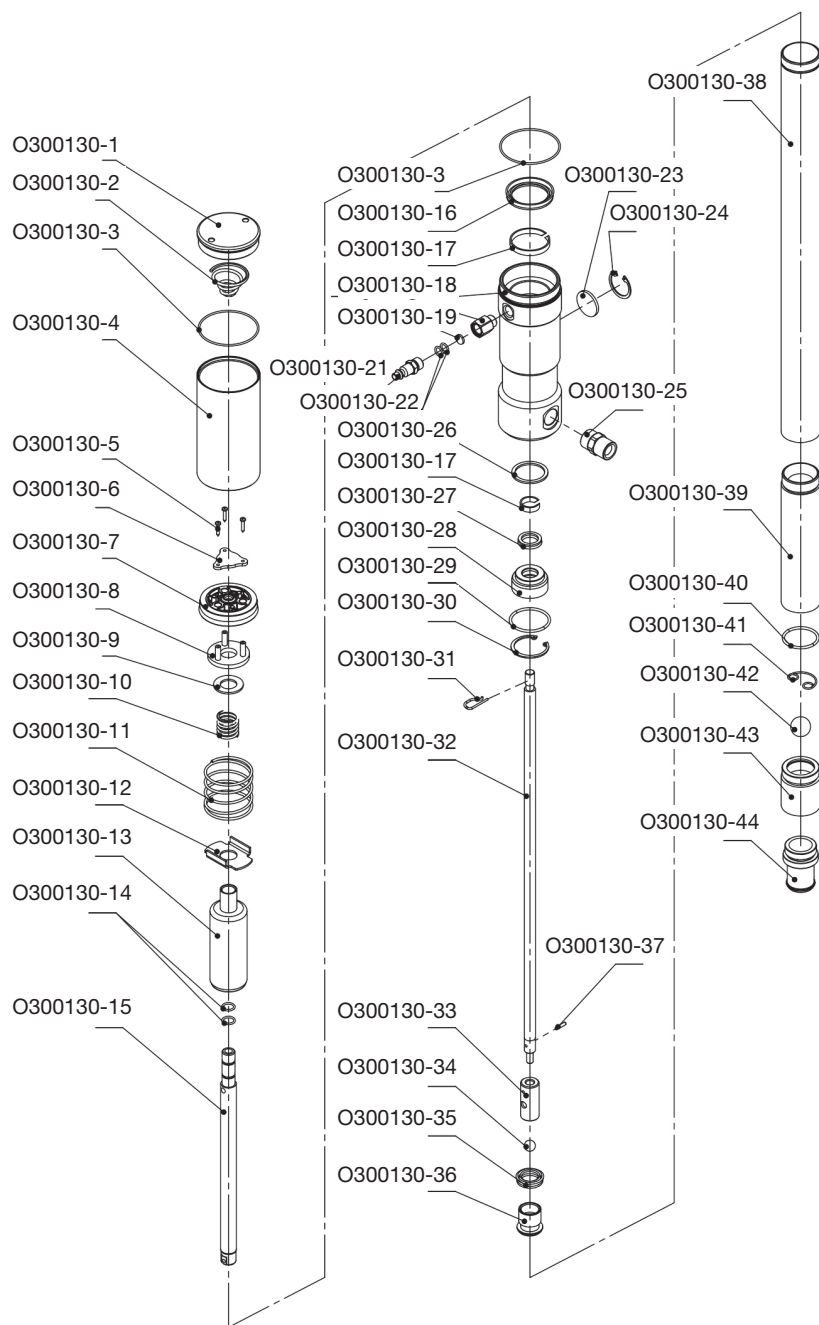
##### Part List

Part No.	Description
1	Oil Pump
2	Bung Adapter
3	Oil Pistol
4	Hose with Fitting
5	Air Hose with Quick Coupling
6	Drum
7 (7-1, 7-2, 7-3)	Filter, Pressure Regulator & Lubricator



## Ordering Spare Parts

### Parts List – Part No. O300130



Note: The Part Numbers with “\*” are included in repair kit O300130-RK

Part Number	Description	Qty
O300130-1	Air Motor Cover	1
O300130-2	Spring	1
O300130-3*	O-Ring	2
O300130-4	Air Motor Shell	1
O300130-5	Screw	3
O300130-6	Plate	1
O300130-7*	Piston	1
O300130-8	Plate	1
O300130-9	Gasket	1
O300130-10	Spring	1
O300130-11	Spring	1
O300130-12	Back Plate	1
O300130-13	Barrel	1
O300130-14*	O-Ring	2
O300130-15	Pole	1
O300130-16*	Seal	1
O300130-17	Guiding	1
O300130-18	Air Control Center	1
O300130-19	Joint	1
O300130-20	Silencer	1
O300130-21	Joint	1
O300130-22*	O-Ring	2
O300130-23	Silencer	1
O300130-24	Spring Circlip	1
O300130-25	Joint	1
O300130-26	Washer	1
O300130-27*	Seal	1
O300130-28	Joint	1
O300130-29*	O-Ring	1
O300130-30	Spring Circlip	1
O300130-31	Screw	1
O300130-32	Connect Shaft	1
O300130-33	Connect Tube	1
O300130-34	Ball	1
O300130-35*	Seal	1
O300130-36	Piston	1
O300130-37	Pin	1
O300130-38	Extension Tube	1
O300130-39	Suction Tube	1
O300130-40*	O-Ring	1
O300130-41	Spring Circlip	1
O300130-42	Ball	1
O300130-43	Ball Seat	1
O300130-44	Connector	1

NSW/ACT  
TEL: (02) 9677 1555  
FAX: (02) 9675 1155

QLD/PNG  
TEL: (07) 3204 9166  
FAX: (07) 3204 1224

VIC/TAS  
TEL: (03) 8787 8288  
FAX: (03) 8787 8266

WA  
TEL: (08) 9302 4199  
FAX: (08) 9303 2095

SA/NT  
TEL: (08) 8241 7111  
FAX: (08) 8241 7011

NZ  
TEL: (09) 447 1007  
FAX: (09) 447 1008