

### Description

Model 925 is a heavy-duty push/pull piston-less pump designed for the transfer of light Chemicals & Solvents. The pump is made from polypropylene & is lightweight at 1kg. It is self priming, discharges on the down stroke, anti drip swivel nozzle with On/Off tap and telescopic down-tube to suit 60 Litre or 205 Litre Drums. Discharge is approximately 1/4 litre per stroke. 925-20 is suitable for the 20 litre drums. 925-V is for use with more aggressive chemicals and solvents that are compatible with Viton seals.

### Specifications

Uses	Mild acids, alkalis, oils, solvents, etc from 60L or 205L drums. Check compatibility charts.
Discharge Quantity	1/4 litre per stroke
Materials	Polypropylene / Alkathene polymer valve / PTFE coated Nitrile Seals OR Viton Seals (950-V)
Weight	1kg

### Assembly Instructions

#### 1 Suction Tube and Strainer Assembly

Screw pump body to first piece of 2 part suction tube. Use teflon tape (provided) on joint threads. Connect the second length of suction tube. Slide bung adaptor (part No.16) over the top section of the suction tube. Screw the suction tube assembly into the bottom of the pump body (part No 7). Make sure to use teflon tape or other joint compound.

*Note: All connections must be airtight for the pump to create suction & operate correctly.*

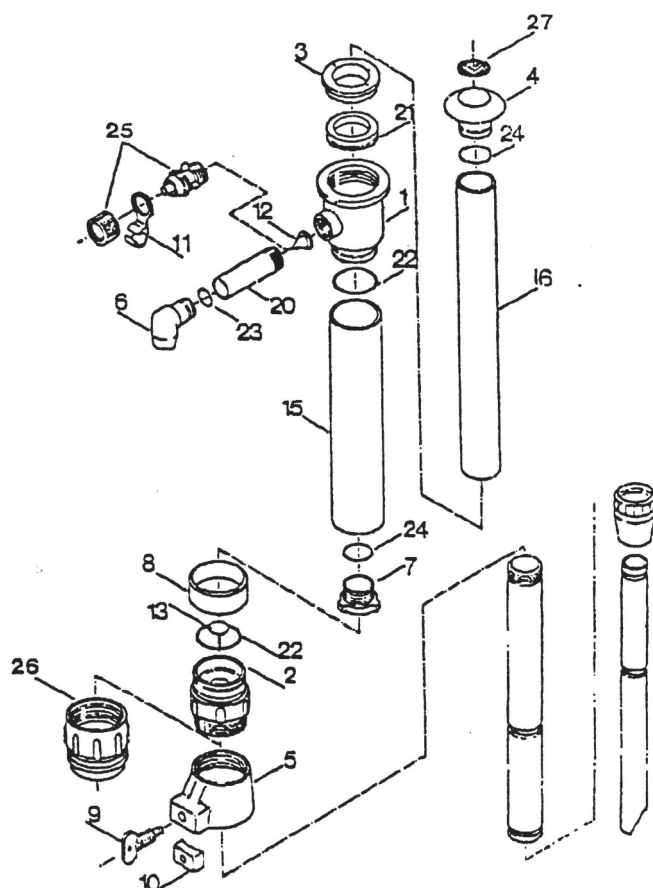
### Operating Instructions

- 1 Ensure that suction tube is fully extended and that all thread connections are air tight.
- 2 With the aid of the bung adaptor, connect the pump to the 20, 60 or 205lt drum.
- 3 If the alignment of the pump in the drum does not suit the application, adjust 360° alignment fitting to enable pump to operate in required position.
- 4 Action the pump by pulling the pump handle up and plunging it back down until you feel that the pump body is primed. After two or three more actions of the pump handle, liquid being transferred will appear at the pump outlet.
- 5 When you have finished transferring product, to ensure a long working life for your pump, please ensure that all liquid in the pump body is pumped through and out of the pump body into a smaller drum or back into the main drum. Failure to do so will result in the valve being bathed in aggressive liquid which may cause pump to fail when you next go to use it.

*Note: Before pumping, always consult the parts list included to verify that each component is compatible with the chemical being pumped. A chemical compatibility list is available from your drum pump supplier or Alemlube Equip.*



# Parts and Drawing Breakdown For The 925



## Ordering Spare Parts

### Parts List – Part No. 925 Chemical Pump

ITEM	PART NO	DESCRIPTION
1	925-1	Pump Outlet Body
2	925-2	Pump Inlet Body
3	925-3	Main Seal
4	925-4	Pump Handle
5	925-5	Female bung Adaptor
6	925-6	Swivel Outlet Nozzle
7	925-7	Pump Inlet Adaptor
8	925-8	Collar
9	925-9	Thumb Screw
10	925-10	Clip
11	925-11	Hose Locking Clamp
12	925-12	Valve
13	925-13	Plunger Valve

ITEM	PART NO	DESCRIPTION
15	925-15	External Cylinder
16	925-16	Inner Cylinder
20	925-20	Outlet Shaft
21	925-21	Seal
22	925-22	O Ring
23	925-23	O Ring
24	925-24	O Ring
25	925-25	Hose Adaptor Kit
26	925-26	Trisure Bung Adaptor
27	925-27	Label
28	925-28	Suction Tube
29	925-29	Suction Tube
30	925-30	Adaptor

## Trouble Shooting

TROUBLE	REMEDY
Pump does not pump	Check suction tubes to make sure they are airtight.
Handle is stiff to turn	1. Lubricate with teflon spray lubricant. Rinse pump with water or other suitable solvent for chemical being pumped. 2. Open pump body and clean internal parts so they rotate freely. 3. If rotor (6) or vanes (5) are swollen from chemical permeation, they may need to be replaced.

NSW

TEL: (02) 9939 0711  
FAX: (02) 9939 0411

QLD/PNG

TEL: (07) 3889 8480  
FAX: (07) 3889 8490

VIC/TAS

TEL: (03) 8787 8288  
FAX: (03) 8787 8266

WA

TEL: (08) 9209 3066  
FAX: (08) 9209 3933

SA/NT

TEL: (08) 8241 7111  
FAX: (08) 8241 7011

NZ

TEL: (09) 447 1007  
FAX: (09) 447 1008