

#### Description

The EL Series O30090 Oil Transfer Hose Reel is a heavy-duty constructed hose reel made for a long life in professional & automotive applications.

The EL Series O30090 Oil Transfer Hose Reel is covered by corrosion resistant powder coating with two supporting arms & a galvanised base.

It has a dual pedestal base with a double supporting 1-3/8" axle with a full flow shaft & swivel joint which is structurally reinforced.

It has a multi-position locking ratchet, adjustable guide arm, four direction non-sag rollers & can be wall, ceiling or floor mounted.



#### Technical Details

Item No.	Maximum Pressure	Hose Working Temperature	Hose Capacity		
			Material	I.D.	Length
O30090	2320PSI (160Bar)	-20~100°C (-4~210°F)	S.A.E.1001R1 Wire Braid	1/2"/12.5mm	15m

Read the following precautions and instructions before you begin assembly or using.  
Failure to comply with these instructions could result in personal injury or property damage.  
Keep these instructions in a convenient location for future reference.

## **Safety Warning and Precautions**

**WARNING:** The warnings, cautions, and instructions discussed in this instruction manual cannot cover all possible conditions or situations that could occur. It must be understood by the operator that common sense and caution are factors that cannot be built into this product, but must be supplied by the operator.

1. Keep the work area clean and dry. Damp or wet work areas can result in injury.
2. Keep children away from work area. Do not allow children to handle this product.
3. Use the right tool for the job. Do not attempt to force small equipment to do the work of larger industrial equipment. There are certain applications for which this equipment was designed. It will do the job better and more safely at the capacity for which it was intended. Do not modify this equipment, and do not use this equipment for a purpose for which it Was not intended.
4. Check for damaged parts. Before using this product, carefully check that it will operate properly and perform its intended function. Check for damaged parts and any other conditions that may affect the operation of this product. Replace damaged or worn parts immediately.
5. Do not overreach. Keep proper footing and balance at all times to prevent tripping, falling, back injury, etc.
6. DO NOT use the equipment when tired or under the influence of drugs, alcohol, or medication. A moment of inattention while operating this equipment may result in serious personal injury.

## **Product Specific Safety Precautions**

1. Make sure incoming line pressure does not exceed the rated operating pressure for your hose reel.
2. Use proper eye protection when assembling and using the hose reel.
3. Assemble the hose reel on a clean workbench.
4. Use soap and water when checking for leaks.

**WARNING:** Exposure of skin directly to pressurized air, or fluid could result in a severe injury.

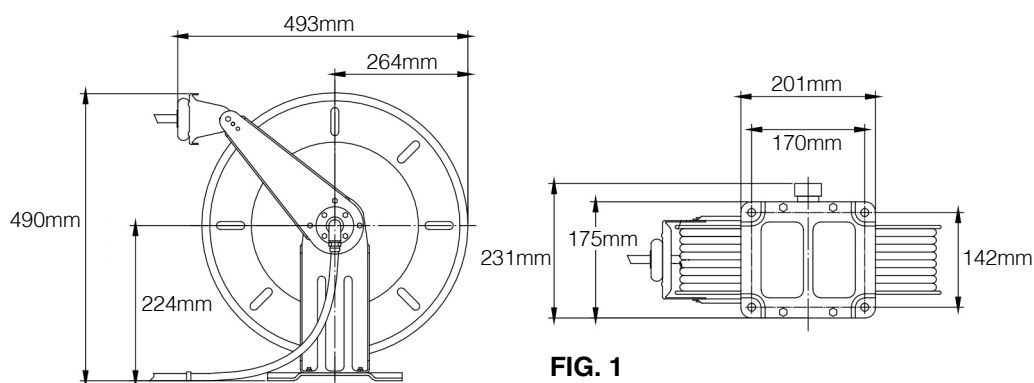


FIG. 1

Spring driven drum: for automatic rewind. Locking ratchet: to maintain the desired length of hose in use.

### Installation of Reel

1. For overhead ceiling mounting: Install the reel at least 10 feet above the floor.
2. If the reel you have purchased does not have hose included, you will need to purchase and attach. Refer to Specifications on box, to determine appropriate hose size and length.
3. You will need to purchase appropriate hardware for mounting your new reel.
  - a) The reel base has four 12.7mm (1/2") drilled holes for mounting on a suitable flat surface. Figure 1 is a template showing the correct location of the 4 mounting holes in the base.
  - b) The reel is supplied with a hose guide roller bracket. The bracket position may be changed depending on the reel mounting position. Figure 2 shows "Typical Mounting positions". If the bracket position needs to be changed, do the following:
    - (1) Pull out some hose and let the reel latch.
    - (2) Remove the bolts that attach the guide roller bracket to the support post.
    - (3) Rotate the guide roller bracket to correct position, replace bolts, and tighten.
4. Using the four holes in the base, mount the reel in the desired location. Be sure to use appropriate hardware and tighten securely.
5. Apply Teflon tape or pipe sealant to supply line threads, attach to the reel inlet and tighten. The other end of the incoming line can now be connected to the desired supply source.
6. If the hose has been supplied with the reel: Apply Teflon tape or pipe sealant to the outlet fitting on the reel hose, then attach to the desired tool, or nozzle. Check connection for leakage, also check the hose reel for correct operation. See: Operation section.
7. If hose stopper adjustment is required, pull hose from the reel and allow to latch at the desired length. Loosen stopper bolts, and slide the stopper to a position close to the hose guide. Tighten stopper bolts, and unlatch the reel.

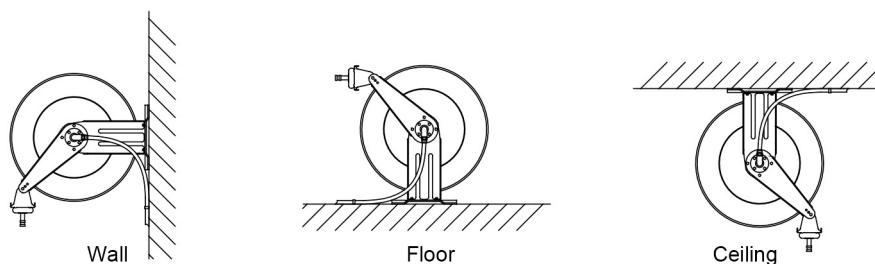


FIG. 2

## Installation of Hose

1. Securely stabilise the reel.
  2. Facing the swivel fitting side of the reel: Turn the drum clockwise, by hand, until the rewind spring is tight, and the drum has latched. As an extra precaution while installing the new hose, secure the drum in the latched position.
  3. Insert the end of the hose through the guide roller bracket, and feed through the opening in the center of the drum hub.
  4. Screw the fitting into the swivel and tighten. Note: To avoid damage to the swivel, use a wrench to support the swivel fitting while tightening the hose.
  5. Attach the hose stopper on the other end of hose, near the outlet fitting.
  6. Carefully release the drum latch, and slowly allow the hose to wind onto the reel.
- Note:** Final spring tension adjustment is accomplished by adding wraps of hose around the drum (to increase tension) or taking off wraps of hose (to decrease tension). Refer to: Adjustment of Spring Tension.

## Operation

1. Check the reel for correct operation by slowly pulling out the hose.  
A "clicking" noise will be heard every half revolution of the drum.
  2. To latch the reel, pull out the hose and allow it to retract after hearing the first second or third "click".
  3. To unlatch, slowly pull out the hose until the "clicking" noise stops, and then let the hose retract until the hose stop rests against the hose guide.
- Note:** To avoid damage to the reel, always hold on to the hose while it is rewinding.
4. Periodically check the hose condition for wear or damage, and check the swivel fitting for leakage.  
Replace any worn, damaged, or leaking parts.

## Adjustment of Spring Tension

1. Pull out approximately 2m of hose and allow the drum to latch.
2. Remove the hose stopper from the hose, and feed the hose back through the guide.
3. Wrap the pulled hose one time around the drum to increase tension or unwrap hose one time from the drum to decrease tension.
4. Re-insert hose through the guide, and install the stopper onto the hose end.
5. Unlatch the drum and check tension. Pull hose from the reel, and adjust the stopper position if necessary.

## Replacement of Swivel Seal

**Note:** There are two types of swivel arrangements.

1. Turn off and disconnect the supply line from the swivel inlet.
2. Remove the swivel assembly from the reel axle.
3. Hold the fitting body in a vice. Remove the brass tube from body, and remove the swivel nut from the tube.
4. Replace the seals and reassemble the swivel. Apply pipe sealant to brass tube threads, thread into the fitting body and tighten.
5. Re-connect the swivel to reel axle, and tighten.

**Note:** Apply sealant to the swivel nut before threading into the axle.

6. Re-connect the inlet supply line.

## Replacement of Hose

1. Turn off supply to the reel.
  2. Pull out all of the old hose and lock the reel in this position.  
Caution: Make sure the reel drum is securely locked and cannot rotate back.
  3. Carefully disconnect the hose from the male fitting in the axle centre and remove the old hose.
  4. Feed the new hose through the guide and opening in the drum, and connect to the male fitting.
  5. Install the stopper on the other end of the hose in the same position as before.
  6. Carefully release the drum latch, and slowly allow the hose to wind onto the Reel.
- Note:** Final spring adjustment is accomplished by adding or removing wraps of hose around the drum.  
(Details see spring tension adjustment).

## Spring Canister Warning

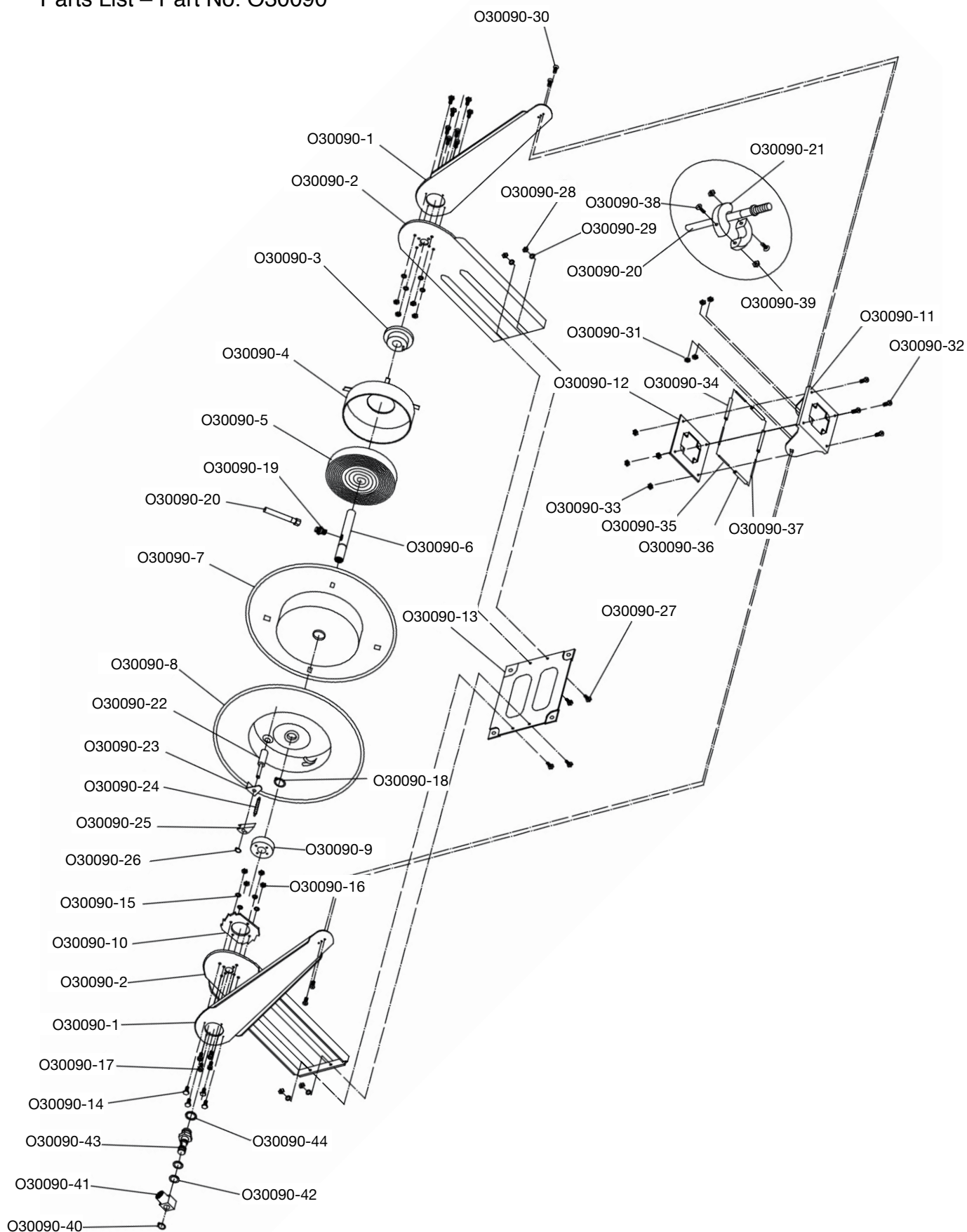
If the rewind spring fails for any reason, for safety reasons, Alemlube strongly recommends the replacement of the spring canister be carried out by a professional mechanic.

## LIMITED WARRANTY

1. Alemlube warrants this hose reel against defects in material and craftsmanship, for a period of 12 months from the date of purchase.
2. Hose, if supplied with reel, O-rings, plastic rollers and the rubber stopper are deemed to be normal wear items; not warranted.
3. Alemlube's liability is limited to replacement or repair of the defective material within the warranty period, when returned freight prepaid to the distributor or their designated service depot.
4. The warranty does not cover damage caused by accident, misuse or faulty installation.
5. The reel must be installed and maintained in compliance with the instructions.

## Ordering Spare Parts

### Parts List – Part No. O30090



NSW/ACT

TEL: (02) 9939 0711

FAX: (02) 9939 0411

QLD/PNG

TEL: (07) 3889 8480

FAX: (07) 3889 8490

VIC/TAS

TEL: (03) 8787 8288

FAX: (03) 8787 8266

WA

TEL: (08) 9209 3066

FAX: (08) 9209 3933

SA/NT

TEL: (08) 8241 7111

FAX: (08) 8241 7011

NZ

TEL: (09) 447 1007

FAX: (09) 447 1008

## Ordering Spare Parts

### Parts List – Part No. O30090

Part Number	Description	Qty
O30090-1	Support Bracket Arm	2
O30090-2	Support Bracket	2
O30090-3	Assembly Hub Bearing	1
O30090-4	Drum for Spring	1
O30090-5	Spring	1
O30090-6	Axle	1
O30090-7	Drum	1
O30090-8	Drum	1
O30090-9	Assembly Hub Bearing	1
O30090-10	Locking Ring	1
O30090-11	Guide Sub-Plate	1
O30090-12	Guide Sub-Plate	1
O30090-13	Base	1
O30090-14	Bolt (M6*16/M6*12)	8
O30090-15	Washer	8
O30090-16	Nut	8
O30090-17	Bolt	8
O30090-18	Retaining Ring	1
O30090-19	Fitting	1
O30090-20	Hose	1
O30090-21	Rubber Bumper Block	2
O30090-22	Axle	1

Part Number	Description	Qty
O30090-23	Support Block	1
O30090-24	Spring, Dog	1
O30090-25	Cam, Locking	1
O30090-26	Retaining Ring	1
O30090-27	Bolt	4
O30090-28	Nut	4
O30090-29	Washer	4
O30090-30	Bolt	4
O30090-31	Nut	4
O30090-32	Bolt	4
O30090-33	Nut	4
O30090-34	Roller	2
O30090-35	Axle for Roller	2
O30090-36	Roller	2
O30090-37	Axle for Roller	2
O30090-38	Bolt	2
O30090-39	Nut	2
O30090-40	Retainer	1
O30090-41	Swivel Body	1
O30090-42	O-Ring	2
O30090-43	Swivel Spool	1
O30090-44	Washer	1

NSW/ACT  
TEL: (02) 9939 0711  
FAX: (02) 9939 0411

QLD/PNG  
TEL: (07) 3889 8480  
FAX: (07) 3889 8490

VIC/TAS  
TEL: (03) 8787 8288  
FAX: (03) 8787 8266

WA  
TEL: (08) 9209 3066  
FAX: (08) 9209 3933

SA/NT  
TEL: (08) 8241 7111  
FAX: (08) 8241 7011

NZ  
TEL: (09) 447 1007  
FAX: (09) 447 1008