

Description

The 20022 Cordless Rechargeable LED Workshop Light has 36 LED elements. The 30 LEDs on the side of the light are for general ambient lighting and the six LEDs at the top are for torch beam lighting. The life of the LED elements is rated to 100,000 hours. The light is shatterproof and is supplied inclusive of a 240volt recharger and a 12volt recharger, a docking station and a magnetic centre piece that enables hands free illumination of an area. The maximum active life of the light as a secondary larger source after full recharge is approximately 10 hours. A full charge for 6-8 hours must be completed prior to the initial use of the light to ensure correct operation of your 20022.

Specifications

Uses	Illumination of work areas in confined spaces or after hours.
Battery	7.2V 1800 mA/h – NIMH
Full Recharge Time	2.5 Hours
Operating Temperature	-5 °C to +50°C
Dimensions	335mm long x 55mm in diameter

Operating Instructions

- 1 The 20022 Cordless Rechargeable LED Workshop Light is suitable for a multitude of applications. Ideal as a rechargeable light source in industrial plants, mechanical workshops, food & beverage facilities, mine sites, camping, marine, or just at home, the 20022 can be recharged using the 240volt or the 12volt recharger.
- 2 Connect the appropriate power cord to the docking station, disconnect the battery from the LED light by depressing the two clips at the bottom of the light and place the battery into the docking station. The light on the docking station will illuminate red. Leave the battery in the docking station for a pproximately 8 hours and when the battery is fully charged, a green light will illuminate on the docking station.
- 3 Reconnect the battery to the LED workshop light. When the switch is in the middle position (0), the light will be off. When the left side of the switch is depressed (1), the 30 LEDs on the side of the light will illuminate. When the switch is depressed to the right (2), the six LEDs on the top of the light will illuminate.
- 4 The magnetic tag on the back of the 20022 enables hands free use of the light and can assist in storage of the 20022 as well.
- 5 As a secondary light source, the battery will last up to 10 hours before recharging is required. The recharging process will take about 2.5 hours to affect. Lightweight at just 1.2 kgs, the 20022 LED Cordless Rechargeable Workshop Light will assist you to as reducing undertake repair and service work in poorly lit areas reducing frustration, plant and machinery downtime and possibly costs relating to parts and equipment replacement.
- 6 Storage temperature of the 20022 is between -20°C and +70°C and the lifetime of the LEDs is rated at up to 100,000 hours.



Warnings & Safety Issues

If you do not intend to use the light for an extended period, please fully charge the battery prior to storing the light.

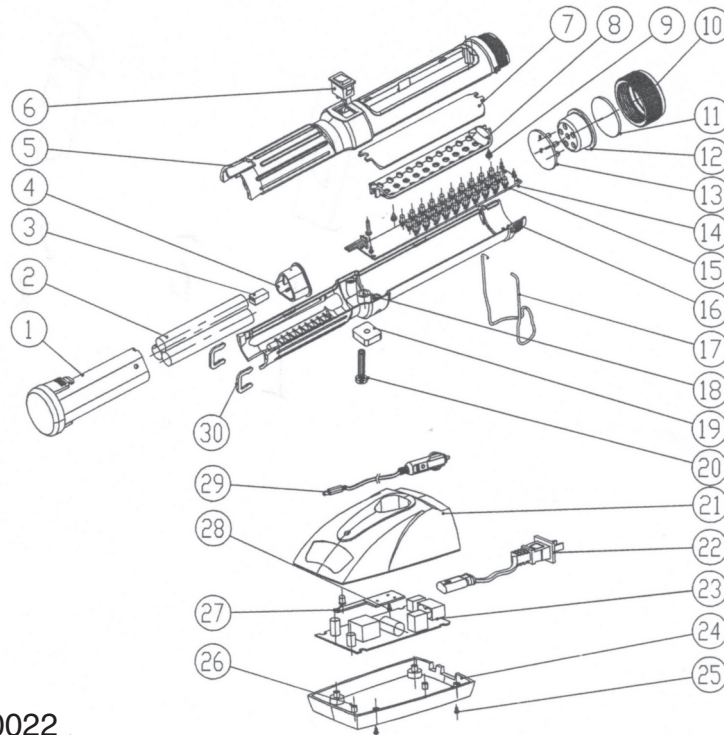
When using the 20022 for the first time, please charge the battery for 6-8 hours.

Please do not have the light on during the recharging process. Avoid looking directly into the light. Do not use the light near open flames.

General

Thank you for choosing to buy and use the 20022 LED Cordless Rechargeable Workshop Light supplied by Alemlube. We trust that the 20022 proves to be a reliable, time saving, cost saving and a productivity increasing tool for you and your company.

Parts And Drawing Breakdown 20022



Ordering Spare Parts

Parts List – Part No. 20022

Part Number	Product Description	Quantity
20022-1	Battery Case	1
20022-2	Battery	1
20022-3	Battery Position Unit	1
20022-4	Battery Cover	1
20022-5	Top Housing	1
20022-6	Switch	1
20022-7	Lens Cover	1
20022-8	Reflector Board	1
20022-9	Screw	2
20022-10	Bottom Housing	1
20022-11	Front Lens Cover	1
20022-12	Front Reflector Board	1
20022-13	Head Lamp Assembly	1
20022-14	Screw	4
20022-15	LED Circuit Board Assembly	1
20022-16	Bottom Housing	1
20022-17	Hanging Hook	1
20022-18	Nut M4	1
20022-19	Magnetic Base	1
20022-20	Bolt M4	1
20022-21	Docking Station Cover	1
20022-22	Power Cord with Plug	1
20022-23	Charge PCB Assembly	1
20022-24	Docking Station Base	1
20022-25	Screw	4
20022-26	Screw	3
20022-27	Charge Position Unit	1
20022-28	Screw	3
20022-29	Power Cord with Cigarette Lighter Plug	1
20022-30	Retainer	2

NSW

TEL: (02) 9939 0711
FAX: (02) 9939 0411

QLD/PNG

TEL: (07) 3889 8480
FAX: (07) 3889 8490

VIC/TAS

TEL: (03) 8787 8288
FAX: (03) 8787 8266

WA

TEL: (08) 9209 3066
FAX: (08) 9209 3933

SA/NT

TEL: (08) 8241 7111
FAX: (08) 8241 7011

NZ

TEL: (09) 447 1007
FAX: (09) 447 1008