



EL SERIES

OWNER'S TECHNICAL MANUAL

G10051 Mini Pistol Grease Gun

Description

The G10051 is a compact & versatile pistol grip mini grease gun designed for those difficult to grease points where space is a premium. A unique feature is that the rigid outlet or flexible extension with adaptor can be fitted in either of two positions, front or top placement just by swapping the loader screw and the rigid or flexible extension. The single handed operation also assists with difficult to access lube points. Ergonomically designed, the G10051 can develop maximum pressures of up to 2,900psi. The barrel can hold up to 90cc of bulk grease or can be used with an 85g mini grease cartridge. The G10051 comes complete with a 1/8" BSP 10cm long rigid extension, 23cm flexible extension with adaptor and a 4 jaw coupler.

Specifications

Uses:	Compact, pistol grip mini grease gun for those hard to get to greasing applications
Capacity:	90cc (3oz) bulk grease or 85g mini grease gun cartridges
Output:	Dispenses up to 0.37cc per stroke
Weight / Dimensions:	0.9kg
Max Pressure:	Generates up to 2,900psi

Operating Instructions

There are two ways to fill the gun with grease:

A: Mini Grease Cartridge:

Unscrew the grease barrel from the gun; withdraw the piston rod until the raised tabs at the end of rod clear the slots in the end cap then rotate 90° to lock the rod into open position. Remove cap from the grease cartridge, insert the cartridge into the barrel and then re screw the barrel assembly back onto the gun so that the cartridge sits well against the follower cup. Once in position, rotate the rod back 90° & push the piston rod firmly back into the barrel.

B: Bulk Grease Loading:

Unscrew the grease barrel from the gun head & insert the barrel into the bulk grease. Suck the grease up into the barrel by pulling the rod all the way back & lock it by rotating the piston rod by 90°. When the barrel is full with grease, re screw the barrel assembly back onto the gun head so that the follower sits well against the grease. Rotate the piston rod back by 90° to unlock & push the rod firmly back into the barrel.

Maintenance

Cleaning: always keep the follower cup free of impurities. Your grease should be clear of any foreign particles; dirt etc and the gun should be checked and cleaned regularly.

Trouble Shooting

Air pockets in the grease: If the gun is pumped but no grease appears from the coupler, unscrew the loader valve on the head & pump a few strokes.

Unscrew the barrel assembly from the gun head with two or three turns and then push on the plunger rod. With the follower cup engaged, the follower cup will move further down into the barrel venting any trapped air out through the thread connections between the barrel and head. Unscrew the rigid extension as well to assist this process if required.

Limited Warranty

1. The manufacturer warrants this product against defects in material & craftsmanship for 12 months from date of purchase.
2. The manufacturer's liability is limited to the replacement or repair of the defective material within the warranty period, when returned freight prepaid to Alemlube or their designated service agent.
3. The warranty does not cover damage caused by accident, misuse or faulty installation.



NSW
TEL: (02) 9939 0711
FAX: (02) 9939 0411

QLD/PNG
TEL: (07) 3204 9166
FAX: (07) 3204 1224

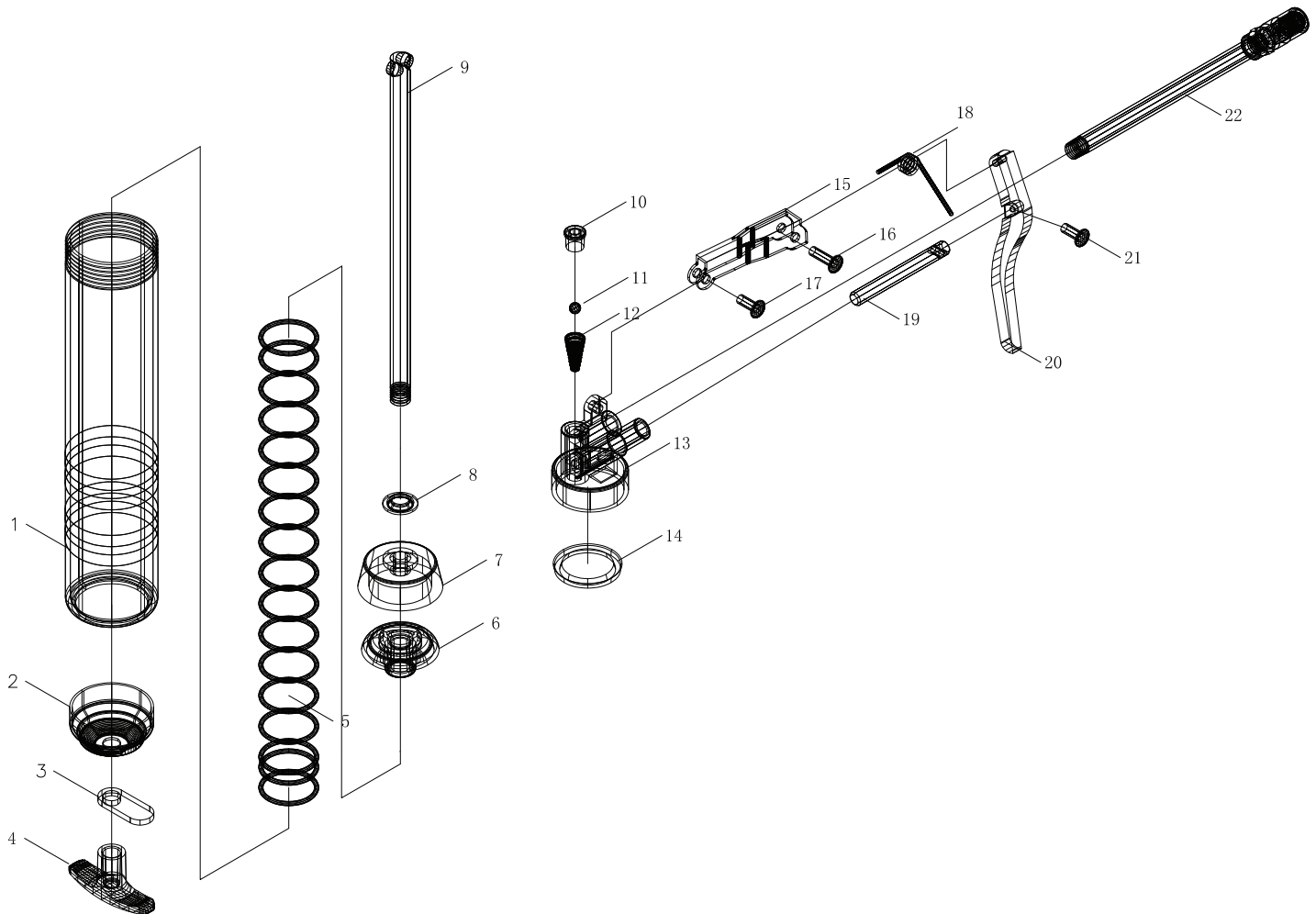
VIC/TAS
TEL: (03) 8787 8288
FAX: (03) 8787 8266

WA
TEL: (08) 9302 4199
FAX: (08) 9303 2095

SA/NT
TEL: (08) 8241 7111
FAX: (08) 8241 7011

NZ
TEL: (09) 447 1007
FAX: (09) 447 1008

Parts and Drawing Breakdown For G10051



Ordering Spare Parts

Parts List – Part No. G10051

Part No	DESCRIPTION	Q'TY	PART NO	DESCRIPTION	Q'TY
G10051-1	Container Tube	1	G10051-15	Jointer	1
G10051-2	Bottom Cap	1	G10051-16	Handle Rivet	1
G10051-3	Catch Plate	1	G10051-17	Handle Rivet	1
G10051-4	Plunger Handle	1	G10051-18	Handle Spring	1
G10051-5	Long Spring	1	G10051-19	Piston Rod	1
G10051-6	Backlash Gasket	1	G10051-20	Finger Spring	1
G10051-7	Plunger	1	G10051-21	Handle Rivet	1
G10051-8	Plunger Washer	1	G10051-22	Rigid Spout	1
G10051-9	Long Spring Kit	1	G10051-23	Flexible Extention	1
G10051-10	Upper Plug	1	G10051-GC	Grease Cartridge Mini 85g	1
G10051-11	Ball Check				
G10051-12	Ball Spring				
G10051-13	Pump Head				
G10051-14	Container Gasket				

NSW

TEL: (02) 9939 0711
FAX: (02) 9939 0411

QLD/PNG

TEL: (07) 3204 9166
FAX: (07) 3204 9166

VIC/TAS

TEL: (03) 8787 8288
FAX: (03) 8787 8266

WA

TEL: (08) 9302 4199
FAX: (08) 9303 2095

SA/NT

TEL: (08) 8241 7111
FAX: (08) 8241 7011

NZ

TEL: (09) 447 1007
FAX: (09) 447 1008