

Description

The Alemlube EL Series HR40050 water hose reel is a quality hose handling, retrieval and storage system suitable for general garden and washdown use around the home and in business.

Supplied complete with PVC garden hose, hose quick connector, water nozzle, integral carry handle and mounting bracket allowing the reel to rotate up to 180°.

Manufactured from high density impact resistant and UV stabilised polypropylene, the HR40050 features a positive latching system that automatically locks the hose at the desired length and the heavy duty internal spring assembly easily retrieves the hose when partially or fully extended.

The Alemlube EL Series HR40050 is quick and easy to install and is a truly economical, robust and reliable hose reel for many day to day watering duties and cleaning operations.

Specifications

Uses	Water
Working Pressure	140psi (10bar)
Materials	Plastic and PVC hose



HR40050 SERIES HOSE REEL

PART No.	PRODUCT DESCRIPTION	PSI/BAR
HR40050	EL Series Water complete with 20m x 12mm ID PVC hose and 1.2m lead in hose	140psi/10bar

Technical Details

Item	Max Pressure (psi/bar)	Hose Working Temperature (C)	Hose Capacity		
			Material	I.D. (inch/mm)	Length (m/ft)
HR40050	140/10	-0~+60	PVC	3/4" BSP(F) / 19	20 / 65

HR40050 Hose Reel Instruction

Safety Precautions

General Safety Rules



WARNING: Read and understand all instructions.

WARNING: The warnings, cautions, and instructions discussed in this instruction manual cannot cover all possible conditions or situations that could occur. It must be understood by the operator that common sense and caution are factors which cannot be built into this product, but must be supplied by the operator.

Hose Reel Safety Precautions

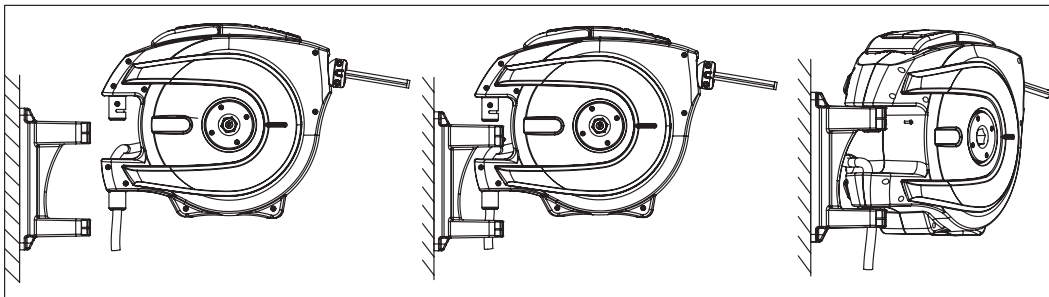
1. Use proper eye protection when assembling and using the hose reel.
2. Keep children away from the work area.
3. Personal injury and/or equipment damage may result if proper safety precautions are not observed.
4. Ensure that reel is properly installed before connecting input and output hoses.
5. Bleed fluid/gas pressure from system before servicing reel.
6. Before connecting reel to supply line ensure that pressure does not exceed maximum working pressure rating of reel.
7. Remember, even low pressure is very dangerous and can cause personal injury or death.
8. If a leak occurs in the hose or reel, remove system pressure immediately.
9. Ensure that reel, hose, and equipment being service are properly grounded.
10. If reel ceases to unwind or rewind, remove system pressure immediately.
11. Do not pull or jerk on hose.

Installation of Hose Reel

You will need to purchase appropriate hardware for mounting your new reel.

- 1) For mounting: For air series, Install reel on the wall and ceiling at most 9feet / 3m above the floor. For water series, Install reel on the wall at most 4.5feet / 1.5m above the floor .
- 2) The reel base has two mounting holes for mounting on a suitable flat surface for air series (four mounting holes for water series). Below figures is a template showing the correct location of the mounting holes in the base.
- 3) Using the mounting holes in the base, mount the reel in the desired location. Be sure to use appropriate hardware and tighten securely.
- 4) The end of incoming hose can be connected to desired supply source.
- 5) Outlet fittings on reel hose attach to desired tool, or nozzle. Check connection for leakage, also check hose reel for correct operation. See: Operation section.
- 6) If hose stopper adjustment is required, pull hose from reel and allow to latch at desired length. Loosen stopper bolts, and slide stopper to a position close to the hose guide. Tighten stopper bolts, and unlatch the reel.

HR40050 for water - wall mount



HR40050 Hose Reel Instruction

Operation

1. Check reel for correct operation by slowly pulling out the hose.
2. To latch the reel, pull out the hose about 3 feet/1m and allow it to retract until the hose stops retracting.
3. To unlatch the reel, slowly pull out the hose about 1 foot/0.3m then let the hose retract until the hose stopper rests against the hose guide opening.
Note: To avoid damage to the reel, always hold on to the hose while it is rewinding.
4. Periodically check the hose condition for wear or damage, and check the swivel fitting for leakage. Replace any worn, damaged, or leaking parts.

Maintenance

Make sure the hose is in proper working order.

Clean the hose with a cloth dipped in warm water to remove dirt or deposits and ensure correct rewinding.

Do not use detergents or solvents which could prove incompatible with cable-winder materials.

Dismantling of the unit by unskilled personal could prove hazardous; the risk involved mainly concern the preloaded springs.

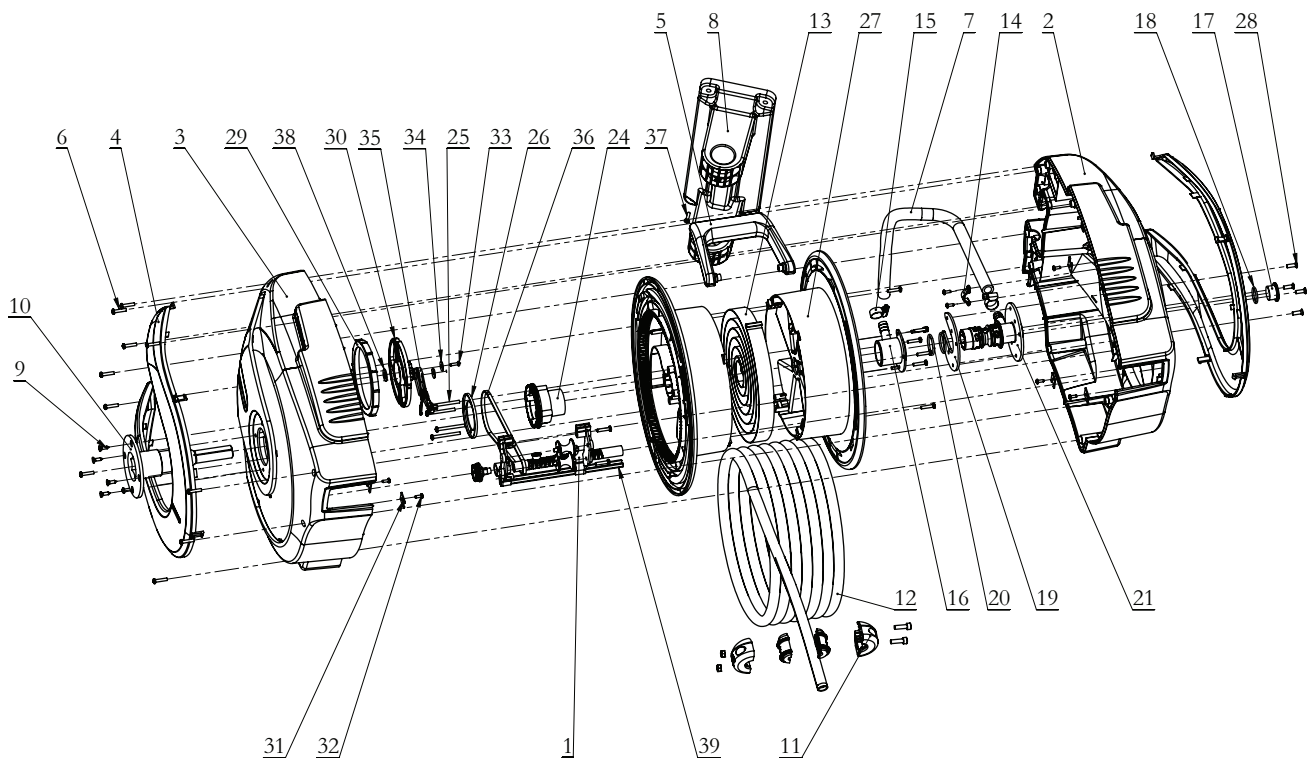
Limited Warranty

1. The manufacturer warrants this hose reel against defects in material and craftsmanship, for a period of 24 months from date of purchase, but not including hose and O-ring parts.
2. Manufacturer's liability is limited to replacement or repair of defective material within the warranty period, when returned freight prepaid to the distributor or their designated service depot.
3. The warranty does not cover damage caused by accident, misuse or faulty installation.
4. The reel must be installed and maintained in compliance with the instructions.



HR40050 Hose Reel

Parts and drawing breakdown



Item No	Part No	Description	Q'ty
1-1	HR40050-1	Hose Compositor	1
1-2	HR40050-2	Right Casing	1
1-3	HR40050-3	Left Casing	1
1-4	HR40050-4	End Cover	2
1-5	HR40050-5	Handle	1
1-6	HR40050-6	Screw	19
2	HR40050-7	Hose Assembly	1
3	HR40050-8	Base	1
4	HR40050-9	Screw	4
5	HR40050-10	Main shaft	1
6	HR40050-11	Bumper Block	1
7	HR40050-12	Hose Assembly	1
8	HR40050-13	Spring	1
9	HR40050-14	Clamp	1
10	HR40050-15	Hose Clamp	2
11	HR40050-16	Swivel Body	1
12	HR40050-17	Plug	1
13	HR40050-18	O-Ring	1
14	HR40050-19	Retainer	1
15	HR40050-20	O-Ring	2

Item No	Part No	Description	Q'ty
21	HR40050-21	Swivel Spool	1
22	HR40050-22	-	-
23	HR40050-23	-	-
24	HR40050-24	Synchronous Wheel	1
25	HR40050-25	Screw	4
26	HR40050-26	Guard Plant	1
27	HR40050-27	Drum	2
28	HR40050-28	Screw	4
29	HR40050-29	Ring	1
30	HR40050-30	Gear	1
31	HR40050-31	Guard Plant	6
32	HR40050-32	Screw	8
33	HR40050-33	Screw	2
34	HR40050-34	Washer	2
35	HR40050-35	Ratchet Paw	1
36	HR40050-36	Synchronous Belt	1
37	HR40050-37	Screw	1
38	HR40050-38	Washer	1
39	HR40050-39	Guide Path	1