



EL SERIES

SERVICE INSTRUCTIONS

G10050 Mini Pistol Grease Gun

Description

The G10050 is a compact & versatile pistol grip mini grease gun designed for those difficult to grease points where space is a premium. With a unique feature of the rigid outlet can be fitted in either of two positions, front or top placement just by swapping the loader screw and the rigid extension. The single handed operation also assists with difficult to access applications. Ergonomically designed, the G10050 can develop maximum pressures of up to 3,500psi. The barrel can hold up to 90cc of bulk grease or can be used with an 85gm mini grease cartridge. The G10050 comes complete with a 1/8" BSP 10cm long rigid extension and a 4 jaw coupler.

Specifications

Uses:	Compact, pistol grip mini grease gun for those hard to get to greasing applications
Capacity:	90cc (3oz) bulk grease or 85gm mini grease gun cartridges
Output:	Dispenses up to 0.45cc per stroke
Weight / Dimensions:	0.9kg
Max Pressure:	Generates up to 3,500psi

Operating Instructions

There are two ways to fill the gun with grease:

A: Mini Grease Cartridge:

Unscrew the grease barrel from the gun; withdraw the piston rod until the raised tabs at the end of rod clear the slots in the end cap then rotate 90° to lock the rod into open position. Remove cap from the grease cartridge, insert the cartridge into the barrel and then re screw the barrel assembly back onto the gun so that the cartridge sits well against the follower cup. Once in position, rotate the rod back 90° & push the piston rod firmly back into the barrel.

B: Bulk Grease Loading:

Unscrew the grease barrel from the gun head & insert the barrel into the bulk grease. Suck the grease up into the barrel by pulling the rod all the way back & lock it by rotating the piston rod by 90°. When the barrel is full with grease, re screw the barrel assembly back onto the gun head so that the follower sits well against the grease. Rotate the piston rod back by 90° to unlock & push the rod firmly back into the barrel.

Maintenance

Cleaning: always keep the follower cup free of impurities. Your grease should be clear of any foreign particles; dirt etc and the gun should be checked and cleaned regularly.

Trouble Shooting

Air pockets in the grease: If the gun is pumped but no grease appears from the coupler, unscrew the loader valve on the head & pump a few strokes.

Unscrew the barrel assembly from the gun head with two or three turns and then push on the plunger rod. With the follower cup engaged, the follower cup will move further down into the barrel venting any trapped air out through the thread connections between the barrel and head. Unscrew the rigid extension as well to assist this process if required.

Limited Warranty

1. The manufacturer warranty's this product against defects in material & craftsmanship for 12 months from date of purchase.
2. The manufacturer's liability is limited to the replacement or repair of the defective material within the warranty period, when returned freight prepaid to Alemlube or their designated service agent.
3. The warranty does not cover damage caused by accident, misuse or faulty installation.



Head Office NSW
TEL: (02) 9939 0711
FAX: (02) 9939 0411

VIC
TEL: (03) 8787 8288
FAX: (03) 8787 8266

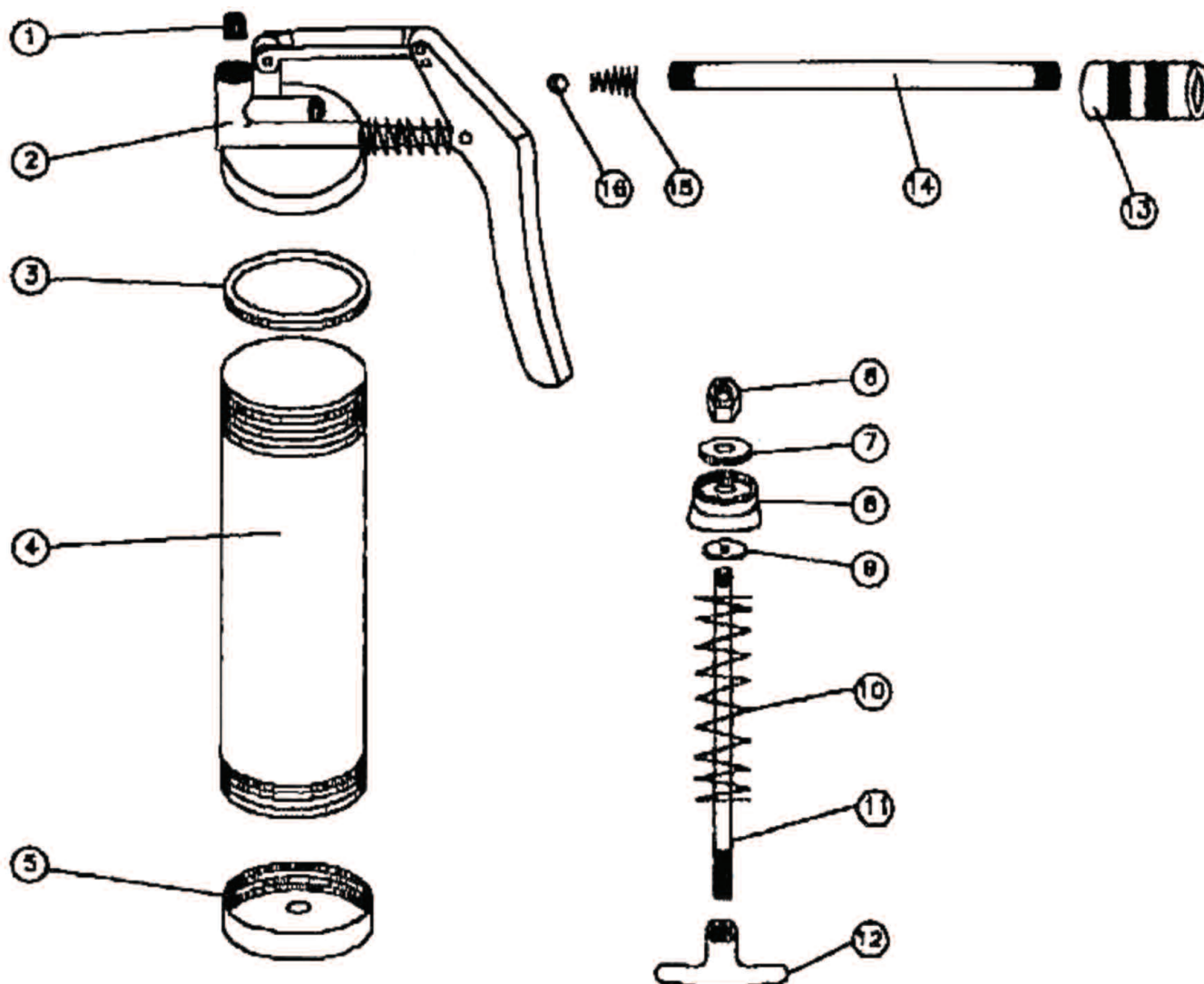
QLD
TEL: (07) 3889 8480
FAX: (07) 3889 8490

SA/NT
TEL: (08) 8241 7111
FAX: (08) 8241 7011

WA
TEL: (08) 9209 3066
FAX: (08) 9209 3933

TAS
TEL: (03) 6343 0477
FAX: (03) 6343 0911

Parts and Drawing Breakdown For G10050



Ordering Spare Parts

Parts List – Part No. G10050

Item No.	Part No.	Description	Qty
1	G10050-1	Loader Screw	1
2	G10050-2	Head Assembly	1
3	G10050-3	Gasket	1
4	G10050-4	Barrel	1
5	G10050-5	End Cap	1
6	G10050-6	Nut	1
7	G10050-7	Washer	1
8	G10050-8	Follower Cup	1
9	G10050-9	Cup Washer	1
10	G10050-10	Piston Spring	1
11	G10050-11	Piston Rod	1
12	G10050-12	Handle Grip	1
13	G10050-13	Hydraulic Coupler	1
14	G10050-14	Rigid Outlet	1
15	G10050-15	Outlet Spring	1
16	G10050-16	Outlet ball	1

Head Office NSW
TEL: (02) 9939 0711
FAX: (02) 9939 0411

VIC
TEL: (03) 8787 8288
FAX: (03) 8787 8266

QLD
TEL: (07) 3889 8480
FAX: (07) 3889 8490

SA/NT
TEL: (08) 8241 7111
FAX: (08) 8241 7011

WA
TEL: (08) 9209 3066
FAX: (08) 9209 3933

TAS
TEL: (03) 6343 0477
FAX: (03) 6343 0911