

### Description

The H10120 & H12060 hand crank bare hose reels are constructed from heavy gauge powder coated steel for use in most low to medium pressure applications. From a capacity of 10mm ID x 40 metres for the H10120 to 12.5mm ID x 20 metres for the H12060, both models come complete with a full flow brass swivel assembly. Ideal for wall mount, the mobile truck or ute mount (plumbers), floor and workbench mount, both models feature a spring loaded pin to prevent hose de-reeling.

### Specifications

Uses	A general range bare reel to store & handle your 10mm or 12.5mm hand crank hose requirements
Capacity	10mm ID x 40m (3/8" ID x 120 ft) or 12.5mm ID x 20m (1/2" x 60 ft)
Weight / Dimensions	Approx. 7.5kg bare / 43H x 41W x 34D cm
Max Pressure / Temp	3,000 psi / 100c

### Instructions

Please read & keep the following precautions and instructions before you begin assembly or use.

### Safety Precautions

- 1 Please make sure the inlet pressure does not exceed the rated pressure for the hose.
- 2 Always use proper eye protection when assembling and using the hose reel.
- 3 Always assemble the hose reel on a clean work bench.
- 4 Use soap and water when checking for air leaks.
- 5 Keep children away from any work area.

Warning: Exposure of skin directly to pressurised air or fluids could result in severe injury.

### Unpacking

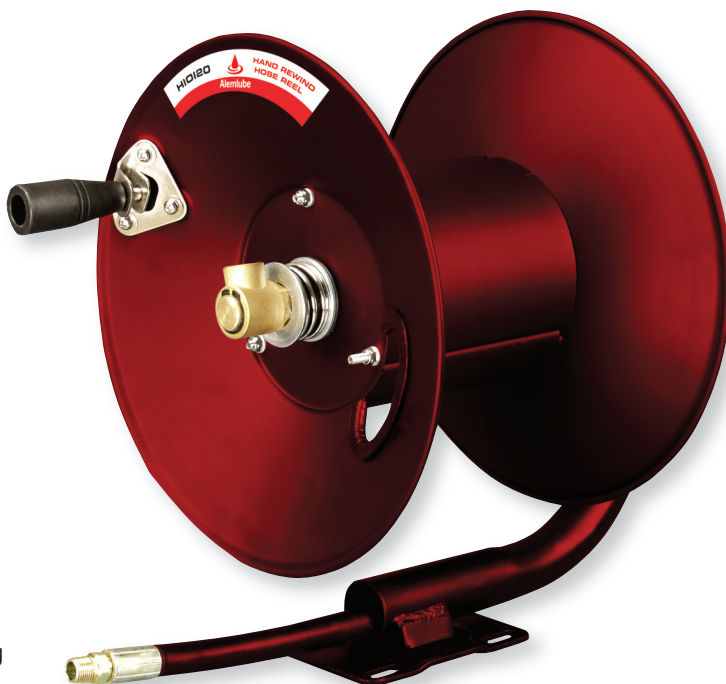
When you receive your new hose reel, some assembly will be required. Check to ensure that you have received the following loose parts; item 7 x 3 screw, item 2 x 6 Washer, item 9 x 3 Nut & item 11 x 1 handle.

### Installation and Assembly

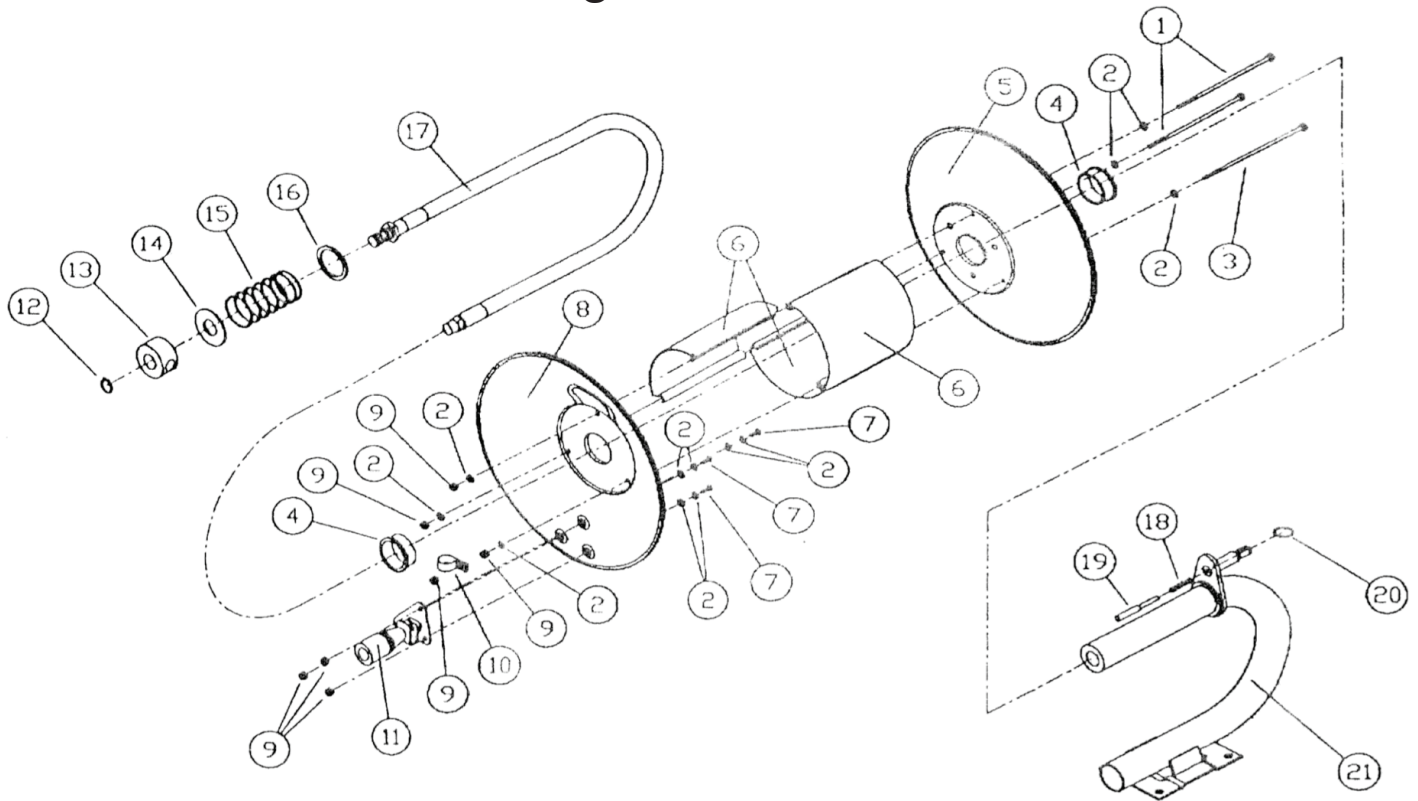
Note: you will need to purchase appropriate hardware for mounting your new reel. Holes have been provided in the reel base for mounting on a suitable flat surface. You will also need to supply hose for the reel. Please refer to the specifications above to

Please refer to the diagram on page 2 for assembly.

1. Match the handle to the 3 holes in the reel flange. Attach using the 3 screws, nuts and washers. Note: the nuts must go on the handle side of the flange.
2. Put the bolts (3/8" or 10mm) through the 4 holes in the base of the hose reel and tighten it to ceiling/wall/floor so the reel can be fastened into position.
3. Apply teflon tape or thread sealant to the reels built in inlet or supply hose fitting. Then attach this supply hose to the outlet of the air/water/oil source.
4. Apply teflon tape or thread sealant to the hose fitting threads. Attach to the reel swivel valve assembly, then feed the rest of the hose through the flange opening.
5. To avoid damaging the swivel valve assembly, make sure to use an appropriate wrench to stabilise the swivel while tightening the hose fitting. The hose length should be no more than 40 metres for a 10mm ID hose or 20 metres for a 12.5mm ID hose.



# Parts And Drawing Breakdown H10120/H12060



## Ordering Spare Parts

### Parts List – Part No. H10120/H12060

Item No.	Part No.	Description	Quantity
1	H10120-1	Bolt , Reel Span m6*6.8"	2
2	H10120-2	Washer, Flt. M6*m18	9
3	H10120-3	Bolt, reel Span m6*7,3"	1
4	H10120-4	Bushing, Flange 42mm ID	2
5	H10120-5	Flange, Reel- Solid - 13"	1
6	H10120-6	Core Sector 5.5"D*6,3"	3
7	H10120-7	Screw, m6-1.0*12mm	3
8	H10120-8	Flange, Reel - Hose in - 13"	1
9	H10120-9	Nut, Nylock m6- 1.0Hx Z	7
10	H10120-10	Strap, Hose Guide	1
11	H10120-11	Handle Assy	1
12	H10120-12	Ring, External retainer - 13mm	1
13	H10120-13	Swivel Body 3/8" (Br)	1
14	H10120-14	Bushing Spring, Return - m2 thkxm24 id	1
15	H10120-15	Spring, Reel Drag	2
16	H10120-16	Bush, Slip Ring - m3 thkxm42.5 id	1
17	H10120-17	Swivel Core W/ 3/8"* 3.2' Hose	1
18	H10120-18	Spring, " Position-Lock" Reel	1
19	H10120-19	Pin, "Position-Lock" Reel	1
20	H10120-20	Ring, Pull "Position-Lock"	1
21	H10120-21	Base, Hose Reel	1

NSW  
TEL: (02) 9939 0711  
FAX: (02) 9939 0411

QLD/PNG  
TEL: (07) 3889 8480  
FAX: (07) 3889 8490

VIC/TAS  
TEL: (03) 8787 8288  
FAX: (03) 8787 8266

WA  
TEL: (08) 9209 3066  
FAX: (08) 9209 3933

SA/NT  
TEL: (08) 8241 7111  
FAX: (08) 8241 7011

NZ  
TEL: (09) 447 1007  
FAX: (09) 447 1008