



EL SERIES

SERVICE INSTRUCTIONS

HR40010 Air Hose Reel

Description

With covers manufactured from high quality impact resistant and UV stabilised polypropylene and a positive latching mechanism that automatically locks hose at the desired length, the EL series reels from Alemlube will provide you with a reliable cost effective means of storing and retrieving hose assemblies in your workshop. The reels can be floor, ceiling or wall mounted and the detachable mounting bracket facilitates ease of reel mounting & storage (if required). Each reel is tested for its ability to hold pressure & hose retraction prior to leaving the factory & adherence to stringent assembly & operation standards guarantees you years of trouble free operation. Non snag roller guide assemblies, crimped hose ends, dependable swivel & spring assemblies are features that ensure trouble free hose storage & retrieval.

Specifications

Use	Ideal for air tools in your workshop
Hose lengths	15m of 10mm ID hose
Materials	Plastic covers, steel spring & buna "N" seals
Pressure	290psi, (20 bar)
Weight/Dimensions	8Kgs / 450mm (L) x 430mm (H) x 215mm (W)
Inlet/Outlet	3/8" BSPT(m) 3/8" BSPT(m)
Working Temp	0°C – 50°C

Installation of Reel

- 1 For overhead ceiling mounting: install reel at most 3 metres above the floor.
- 2 You will need to purchase appropriate hardware for the mounting of your new reel.
- 3 The reel base has three 8.5mm (21/64") drilled holes for mounting on a suitable flat surface. Figure 2 is a template showing the correct location of the 3 mounting holes in the base.
- 4 Using the three holes in the base, mount the reel in the desired location. Be sure to use appropriate hardware and to tighten the reel securely to the mounting location.
- 5 Apply teflon tape or pipe sealant to the outlet fitting on the reel hose. Check connection for any leakage & check the reel for correct operation. See operation section. If hose stop adjustment is required, pull hose from reel and allow the reel to latch at the desired length. Loosen hose stop bolts and slide hose stop to a position close to the hose guide. Tighten hose stop bolts and unlatch the reel.



Operation

- 1 Check your reel for correct operation by slowly pulling out the hose. A clicking noise will be heard every half revolution of the drum.
- 2 Latching mode switch, when your reel is in free run state, pull out the hose and allow it to retract after hearing the first, second or third click.
- 3 To unlatch the reel, slowly pull out the hose until the clicking noise stops, and then let the hose retract until the hose stop rests against the hose guide.
- 4 NOTE: To avoid damage to your reel, always hold onto the hose while it is rewinding. Periodically check the hose condition for wear or damage and check the swivel fitting for leakage. Replace any worn, damaged or leaking parts.

Warning

- 1 Make sure incoming line pressure does not exceed the rated operating pressure for your model hose reel.
- 2 Use proper eye protection when assembling and using the hose reel.
- 3 Use soap and water when checking for leaks.
- 4 Keep children away from the work area.

Head Office NSW
TEL: (02) 9939 0711
FAX: (02) 9939 0411

VIC
TEL: (03) 8787 8288
FAX: (03) 8787 8266

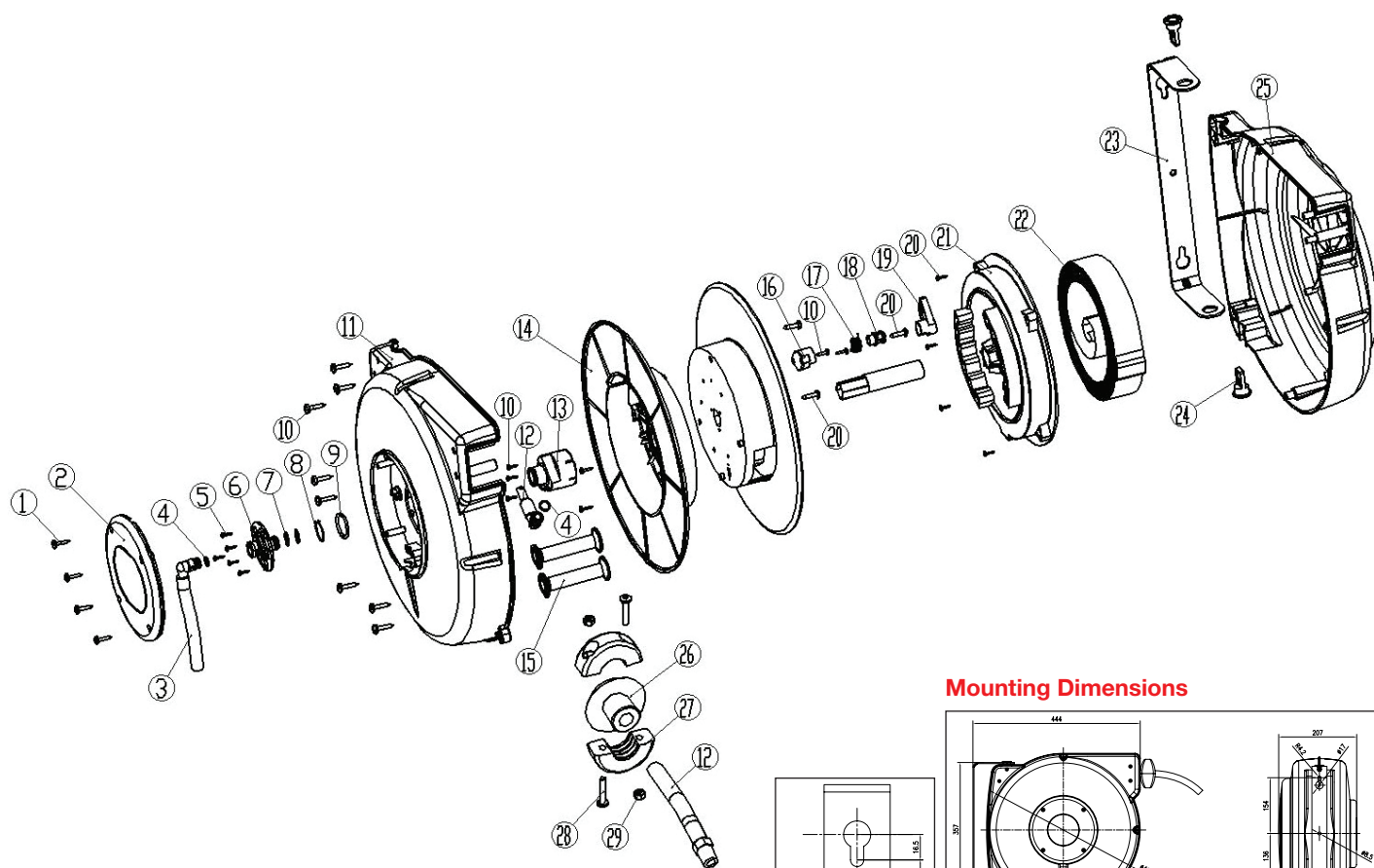
QLD
TEL: (07) 3889 8480
FAX: (07) 3889 8490

SA/NT
TEL: (08) 8241 7111
FAX: (08) 8241 7011

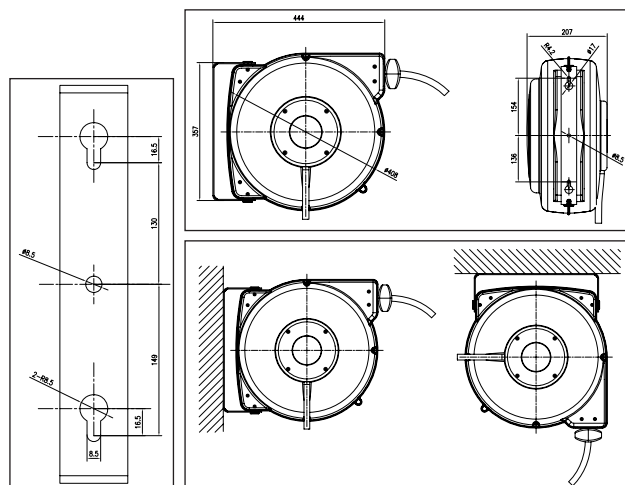
WA
TEL: (08) 9209 3066
FAX: (08) 9209 3933

TAS
TEL: (03) 6343 0477
FAX: (03) 6343 0911

Parts And Drawing Breakdown HR40010



Mounting Dimensions



Ordering Spare Parts

Parts List – Part No. HR40010

Item Number	Part Number	Product Description	Qty	Item Number	Part Number	Product Description	Qty
1	HR40010-1	Screw, ST4.2*30	4	16	HR40010-16	Ratchet base	1
2	HR40010-2	Plastic cover	1	17	HR40010-17	Spring	1
3	HR40010-3	Hose	1	18	HR40010-18	Ratchet axle	1
4	HR40010-4	O-Ring	2	19	HR40010-19	Ratchet paw	1
5	HR40010-5	Screw, ST4.2*13	5	20	HR40010-20	Screw, ST4.2*19	9
6	HR40010-6	Swivel spool	1	21	HR40010-21	Spring drum	1
7	HR40010-7	O-Ring 13.94*2.62	2	22	HR40010-22	Spring	1
8	HR40010-8	Spring washer	1	23	HR40010-23	Bracket	1
9	HR40010-9	Washer	1	24	HR40010-24	Axle	2
10	HR40010-10	Screw, ST4.2*16	13	25	HR40010-25	Outer casing	1
11	HR40010-11	Outer casing	1	26	HR40010-26	Rubber stop	1
12	HR40010-12	Hose	1	27	HR40010-27	Stop block	2
13	HR40010-13	Swivel body	1	28	HR40010-28	Bolt	2
14	HR40010-14	Drum	2	29	HR40010-29	Nut	2
15	HR40010-15	Roller	2				

Head Office NSW
TEL: (02) 9939 0711
FAX: (02) 9939 0411

VIC
TEL: (03) 8787 8288
FAX: (03) 8787 8266

QLD
TEL: (07) 3889 8480
FAX: (07) 3889 8490

SA/NT
TEL: (08) 8241 7111
FAX: (08) 8241 7011

WA
TEL: (08) 9209 3066
FAX: (08) 9209 3933

TAS
TEL: (03) 6343 0477
FAX: (03) 6343 0911