

EXP-155

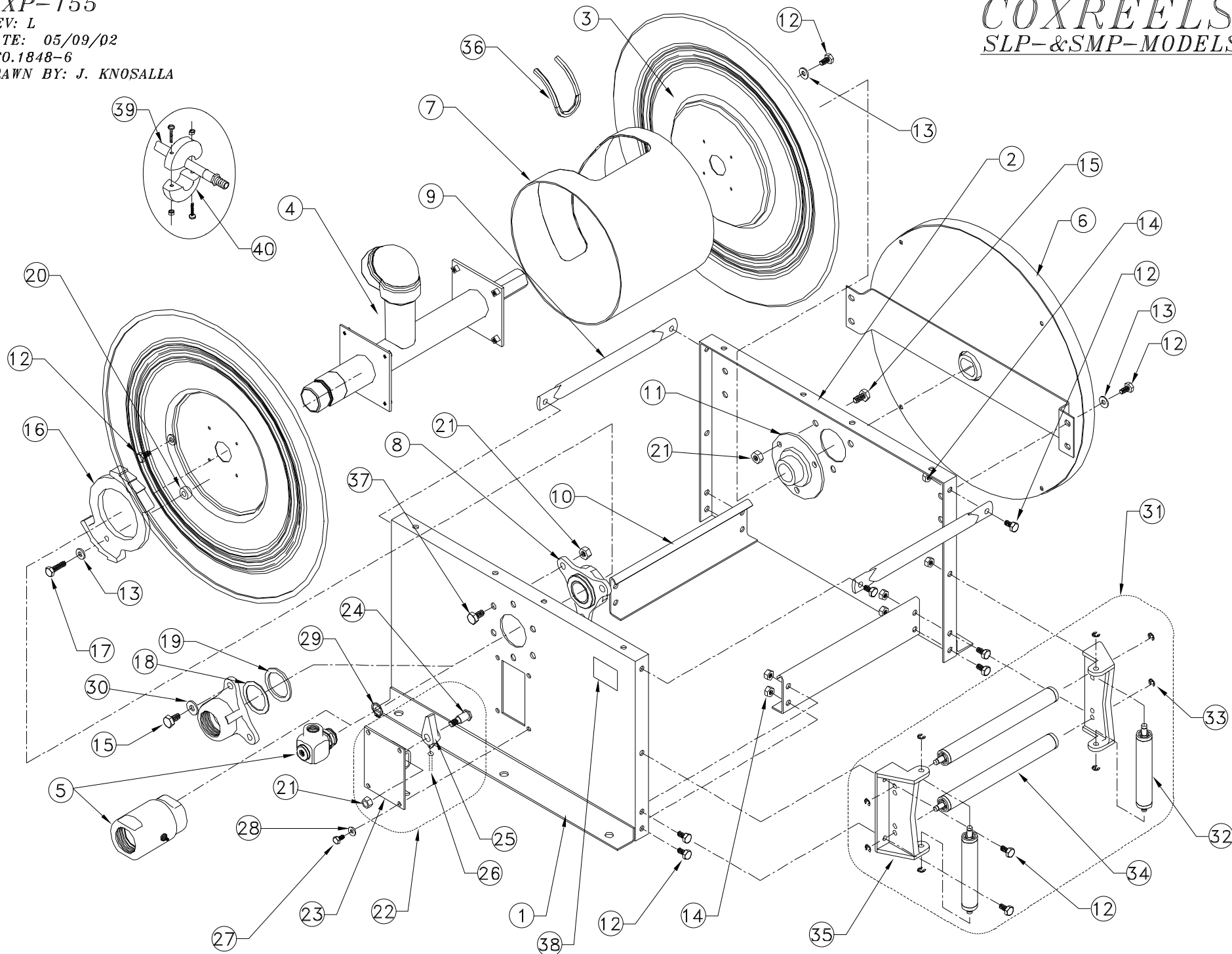
REV: L

DATE: 05/09/02

ECO.1848-6

DRAWN BY: J. KNOSALLA

COXREELS
SLP-&SMP-MODELS



ITEM	PART	DESCRIPTION	QTY
11	20300	ASSEMBLY, BEARING	1
12	312	BOLT, 5/16-18 X 3/4 LG	24
13	112	WASHER, LOCK, 5/16	12
14	111	NUT, LOCK, 5/16-18	14
16	20194	RING, LOCKING	1
17	10218	BOLT, 5/16-18 X 2-1/2 LG	2
20	20780	SPACER	2
21	435	NUT, LOCK, 3/8-16	7
22	20000	ASSEMBLY, LOCKING BRACKET	1

ITEM	PART	DESCRIPTION	QTY
23	639	BRACKET, LOCKING	1
24	1620	BOLT, SHOULDER	1
25	640	CAM, LOCKING	1
26	20019	SPRING	1
27	113	BOLT, 1/4-20 x 1/2"	4
28	114	WASHER, LOCK, 1/2"	4
36	7460-14	TRIM, DRUM EDGE	1
37	20016	BOLT, 3/8-16 x 1"	3
38	10925-5	NAMEPLATE, PRODUCT	1

ITEM	PART	DESCRIPTION	SLP-4100	SLP-550	SLP-575	SLP-5100	SLP-625	SLP-650	SLP-675	SLPL-725	SLPL-750	SLPL-825	SLPL-835	SLPL-850	SMP-4100	SMP-550	SMP-575	SMP-5100	SMPL-625	SMPL-650	SMPL-675
1	20224	ASSY, PANEL, SWIVEL, 20"	1	1			1								1	1			1		
	20230	ASSY, PANEL, SWIVEL, 24"			1	1		1		1		1					1	1		1	
	20236	ASSY, PANEL, SWIVEL, 28"							1		1		1	1							1
2	20222	ASSY, PANEL, SPRING, 20"	1	1			1								1	1			1		
	20228	ASSY, PANEL, SPRING, 24"			1	1		1		1		1					1	1		1	
	20234	ASSY, PANEL, SPRING, 28"							1		1		1	1							1
3	7799	ASSY, DISC, 20"	2	2			2								2	2			2		
	7603-1	ASSY, DISC, 24"			2	2		2		2		2					2	2		2	
	7627-1	ASSY, DISC, 28"							2		2		2	2							2
4	7811	ASSY, PLUMBING, 1/2"	1												1						
	7812	ASSY, PLUMBING, 3/4"		1	1	1										1	1	1			
	7813	ASSY, PLUMBING, 1"					1	1	1										1	1	1
	7814	ASSY, PLUMBING, 1-1/2"	!							1	1	1	1								
	7814-1	ASSY, PLUMBING, 1-1/2"	!											1							
	7815	ASSY, PLUMBING, 1-1/2"	!!							1	1	1	1								
	7815-1	ASSY, PLUMBING, 1-1/2"	!!											1							
5	439	ASSY, SWIVEL, 1/2"	1												1						
	426	ASSY, SWIVEL, 3/4"		1	1	1										1	1	1			
	15257-1	ASSY, SWIVEL, 1"					1	1	1										1	1	1
	20288	ASSY, SWIVEL, 1-1/2"	!							1	1	1	1	1							
	20253-1	ASSY, SWIVEL, 1-1/2"	!!							1	1	1	1	1							
6	15240	ASSY, SPRING CAN	1																		
	20462	ASSY, SPRING CAN		1																	
	15241	ASSY, SPRING CAN			1																
	15233	ASSY, SPRING CAN				1												1			
	20429	ASSY, SPRING CAN					1			1											
	20428	ASSY, SPRING CAN						1													
	15236	ASSY, SPRING CAN							1								1				1
	20431	ASSY, SPRING CAN									1								1		
	15244	ASSY, SPRING CAN									1	1									
	20468	ASSY, SPRING CAN												1							
	15237	ASSY, SPRING CAN													1						
	15238	ASSY, SPRING CAN														1					
	15234	ASSY, SPRING CAN																1			
7	7800-7.5	CENTER DRUM	1	1	1	1									1	1	1	1			
	7816-7.5	CENTER DRUM					1	1	1	1	1	1	1						1	1	1
	7816-9.5	CENTER DRUM												1							
8	20276	ASSY, BEARING HOUSING, 1/2"	1												1						
	20277	ASSY, BEARING HOUSING, 3/4"		1	1	1										1	1	1			
	20996	ASSY, BEARING HOUSING, 1"					1	1	1										1	1	1
	20281	ASSY, BEARING HOUSING, 1-1/2"	!							1	1	1	1	1							
	20257	ASSY, BEARING HOUSING, 1-1/2"	!!							1	1	1	1	1							
9	20244-7.5	BAR, SPACER	1	1	1	1	1	1	1	1	1	1	1		1	1	1	1	1	1	1
	20244-9.5	BAR, SPACER												1							
10	20385-7.5	ANGLE, BOTTOM SPACER	1	1	1	1	1	1	1	1	1	1	1		1	1	1	1	1	1	1
	20385-9.5	ANGLE, BOTTOM SPACER												1							
15	436	BOLT, 3/8-16 X 3/4"	!							3	3	3	3	3							
18	20264	WASHER, BEARING	!							1	1	1	1	1							
19	20266	RING, RETAINING	!							1	1	1	1	1							
29	153	RETAINING RING	1																		
	15015	RETAINING RING		1	1	1										1	1	1			
	15012	RETAINING RING					1	1	1										1	1	1
	20252	RETAINING RING	!!							1	1	1	1	1							
30	437	WASHER, 3/8"	!							3	3	3	3	3							
31	15217-7.5	ASSEMBLY, ROLLER BRACKET	1	1	1	1	1	1	1	1	1	1	1		1	1	1	1	1	1	1
	15217-9.5	ASSEMBLY, ROLLER BRACKET												1							
39	5154-XXX	HOSE, ASSY 1/2" LP	*100 ft																		
	5155-XXX	HOSE, ASSY 3/4" LP	*		50 ft	75 ft	100 ft														
	5096-XXX	HOSE, ASSY 1" LP	*					25 ft	50 ft	75 ft											
	5097-XXX	HOSE, ASSY 3/4" (FUEL)	**		50 ft	75 ft	100 ft														
	5092-XXX	HOSE, ASSY 1" (FUEL)	**					25 ft	50 ft	75 ft											
	5256-XXX	HOSE, ASSY 1/2" MP	*												100 ft						
	5290-XXX	HOSE, ASSY 3/4" MP	*													50 ft	75 ft	100 ft			
40	131-4	BALL STOP, 1/2"	* 1												1						
	430	BALL STOP, 3/4"	*		1	1	1									1	1	1			
	20214	BALL STOP, 1"	*					1	1	1											

! ONLY SUPPLIED WITH STATIONARY SWIVEL MODELS (NO SUFFIX)

* ALL MODELS SUPPLIED "WITH HOSE" UNLESS IDENTIFIED (SLPL OR SMP ON MODELS SUPPLIED "LESS HOSE", ITEMS #39 AND #40 ARE EXCLUDED ON MODELS SUPPLIED "WITH FUEL HOSE" (SLPF-). USE ITEM #39 AS N

!! ONLY SUPPLIED WITH EXTERNAL SWIVEL MODELS (-BUXX SUFFIX)

**

REVISION: L

ECO: 1848-6

DATE: 5/13/02

NAME: J. KNOSALLA