

Description

Model 950 is a heavy-duty lever action pump designed for the transfer of light Chemicals & Solvents. The pump is made from polypropylene & is lightweight at 1.5kg. It is self priming, discharges on the down stroke, has 360° alignment versatility with locking ring, anti drip nozzle, & telescopic up-take pipe to suit 60 or 205 Litre Drums & storage tanks to 900mm (36") depth. Discharge is approximately 1/3 litre per stroke. 950-20 suitable for 20 litre drums. 950-V available with Viton seals. 950V is for use with more aggressive chemicals that are compatible with Viton seals.

Specifications

Uses	Mild acids, alkalis, oils, solvents, etc from 60L or 205L drums. Check compatibility charts.
Discharge Quantity	1/3 litre per stroke
Materials	Polypropylene / polyethylene piston and valves / Nitrile Seals OR Viton Seals (950-V)
Weight	1.5kg

Assembly instructions

1 Suction Tube

Connect the pump body to the telescopic suction tube by threading together. Being sure to use Teflon Tape (provided) for the thread connections.

Note: All connections must be air tight for the pump to create suction & operate correctly.

Operating Instructions

- 1 Ensure that suction tube is fully extended and that all thread connections are air tight.
- 2 With the aid of the bung adaptor, connect the pump to the 20, 60 or 205lt drum.
- 3 If pump is then aligned not as required, adjust 360° alignment fitting to enable pump to operate in required position.
- 4 Action the pump lever until you feel that the pump body is primed and after two or three further actions of the lever, liquid being transferred will appear at the pump outlet.
- 5 When you have finished transferring product, to ensure a long working life for your pump, please ensure that all liquid in the pump body is pumped through and out of the pump body into a smaller drum or back into the main drum.

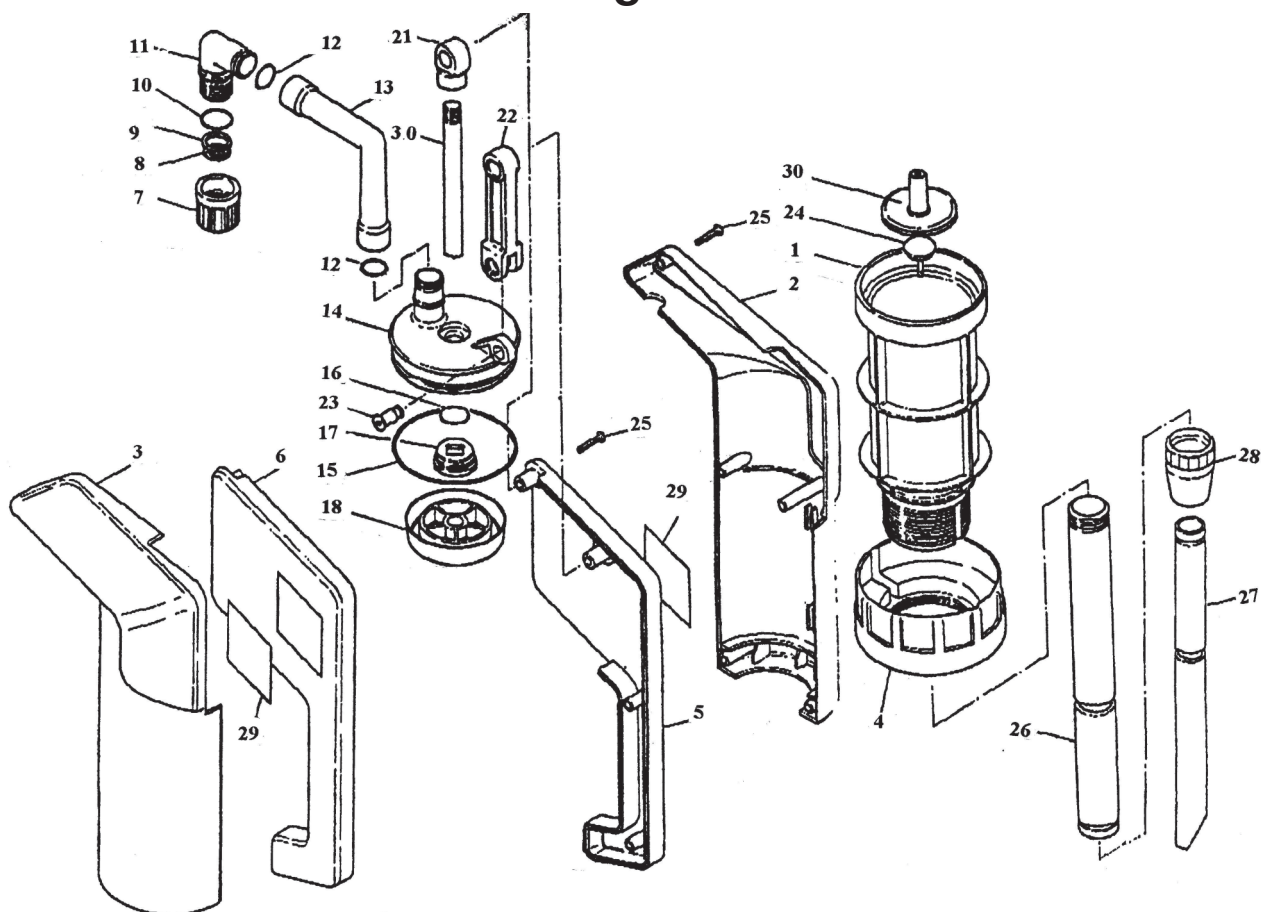
Failure to do will result in piston, valve and piston shaft being bathed in aggressive liquid which may cause pump to fail when you next go to use it.

Important to note:

Before pumping, always consult the parts list included to verify that each component is compatible with the chemical being pumped. A chemical compatibility list is available from your drum pump supplier or Alemlube.

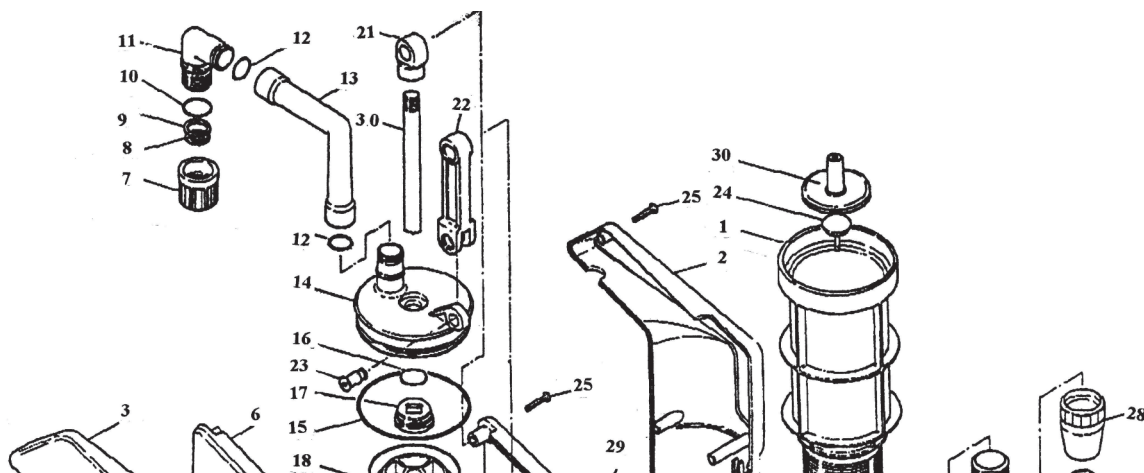


Parts And Drawing Breakdown 950



Ordering Spare Parts

Parts List – Part No. 950



Trouble Shooting

Problem	Remedy
Pump does not pump	Check suction tubes to make sure they are airtight.
Handle is stiff to turn	<ol style="list-style-type: none"> 1 Lubricate with teflon spray lubricant. Rinse pump with water or other suitable solvent for chemical being pumped. 2 Open pump body and clean internal parts so they rotate freely. 3 If rotor (6) or vanes (5) are swollen from chemical permeation, they may need to be replaced.

NSW

TEL: (02) 9939 0711
FAX: (02) 9939 0411

QLD/PNG

TEL: (07) 3889 8480
FAX: (07) 3889 8490

VIC/TAS

TEL: (03) 8787 8288
FAX: (03) 8787 8266

WA

TEL: (08) 9209 3066
FAX: (08) 9209 3933

SA/NT

TEL: (08) 8241 7111
FAX: (08) 8241 7011

NZ

TEL: (09) 447 1007
FAX: (09) 447 1008