

Description

The 51000 12 volt and 51001 24 volt electric drum pump kits made by Piusi in Italy, are designed for the transfer of diesel fuel. Their compact size & carry handle make them the ideal portable kit for your every day diesel transfer jobs. The self priming rotary vane pump, complete with cast iron casing & built in bypass, are powered by a 12 or 24 volt DC motor. With a 30 minute duty cycle, the pumps can deliver diesel fuel at up to 38 litres per minute. Both kits come complete with 4 metres of $\frac{3}{4}$ " antistatic delivery hose, 2 metre power cables & leads, an inlet strainer/hose tail, outlet hose tail & a 52007 manual nozzle. (The kit does not include a downtube or inlet hose. This can be purchased separately if required).

Specifications

Uses	Diesel Fuel transfer
Voltage	51000 - 12V DC; 51001 – 24V DC
Current Drain	Approx 22 Amps at 12V DC; Approx 11 Amps at 24V DC
Delivery Rate	Up to 38 Litres per minute for both models
Duty Cycle	30 minutes on, 30 minutes off for both models
Fuse Capacity	25 @ 12V DC; 15 @ 24V DC
Suction Lift	Up to 2 metres
Weight	Approx 7.5kg

Assembly Procedure Instructions

- 1 Connect the outlet fuel hose to the pump body outlet with thread tape ensuring no leakage.
- 2 Connect the outlet fuel hose to the manual on/off nozzle with thread tape ensuring no leakage.
- 3 Connect your inlet hose or downtube to the inlet side of the pump with thread tape utilizing the hose tail and filter/strainer as appropriate.
- 4 Connect the battery cables with the aid of the heavy- duty alligator clamps to a 12 volt (51000) or 24v (51001) battery.
- 5 Turn on the intended power source.
- 6 The pump motor will start to drive the vane pump head and when you open the nozzle, diesel fuel should start to flow from the fuel nozzle.
- 7 When not in use, please store away in a clean environment to ensure no contaminants can enter the fuel nozzle.



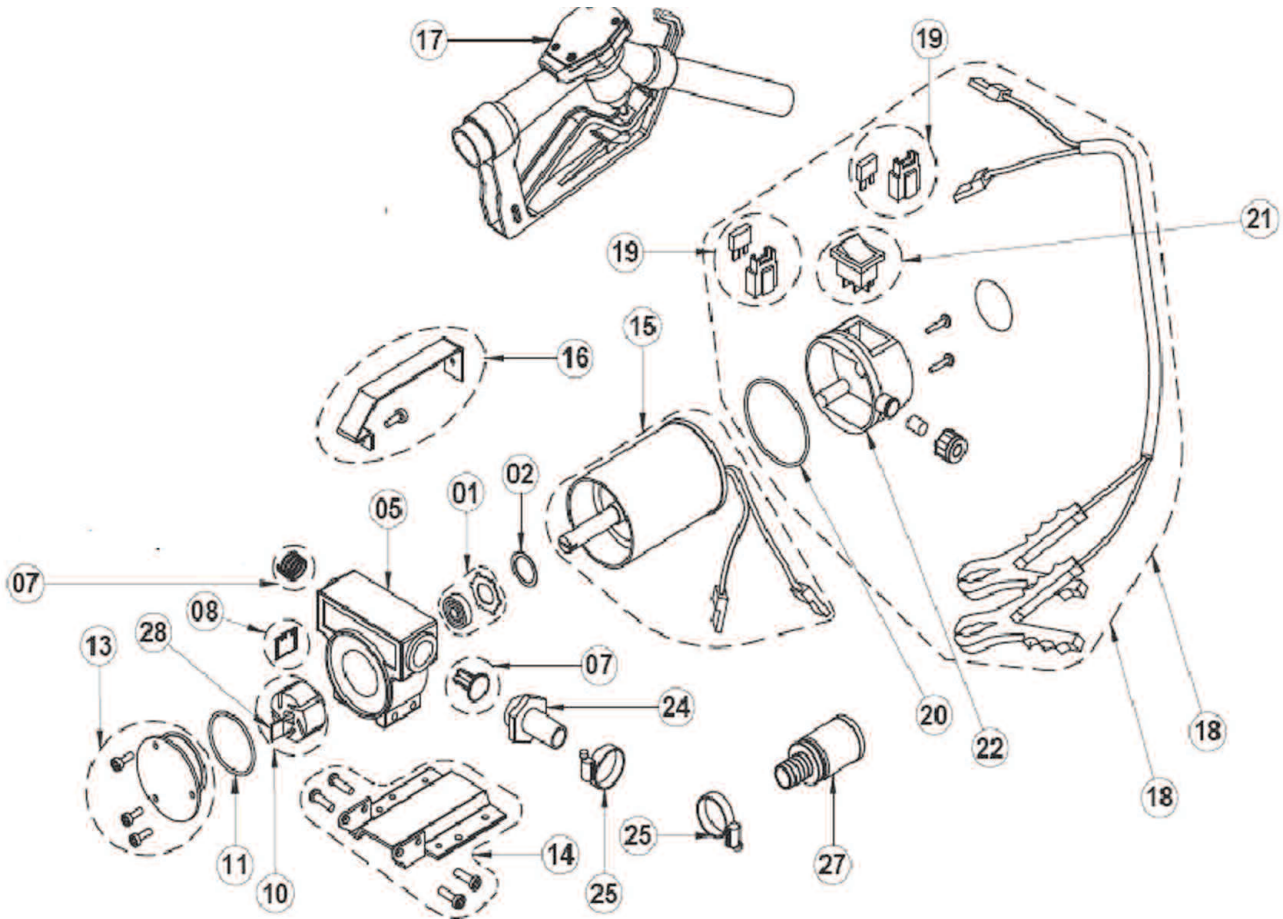
Important to note

The 51000 and 51001 diesel refueling pump kits have a duty cycle of 30 minutes. If you run the pumps for longer than 30 minutes, the motor will burn out. Please note that running the pump for 30 minutes or more (which enables the maximum transfer of 1140 litres of diesel fuel) WILL AUTOMATICALLY VOID THE MANUFACTURER'S WARRANTY.

DO NOT use this pump for unleaded or leaded petrol, kerosene, aviation fuel or any other fuel other than diesel as this pump is not flame proof and using such fuels could cause an explosion.

The pumps have a warranty of 12 months on materials and workmanship.

Parts And Drawing Breakdown 51000/51001



Ordering Spare Parts

Parts List – Part No. 51000/51001

Item No.	Part No.	Description	Qty	Item No.	Part No.	Description	Qty
1	51000-1	Shaft seal	1	18	51000-18	12v terminal box & 2m cable	1
2	51000-2	Compensating ring	1	18	51000-18A	24v terminal box & 2m cable	1
5	51000-5	Pump body	1	19	51000-19	12v fuse	1
7	51000-7	Bypass valve kit	1	19	51000-19A	24v fuse	1
8	51000-8	Vaness 5 pieces	1	20	51000-20	Gasket	1
9	51000-9	Rotor & key kit	1	21	51000-21	Single pole switch	1
10	51000-10	O ring for cover	1	22	51000-22	Terminal box kit	1
13	51000-13	Pump cover	1	23	51000-23	Hose tail 1"	1
14	51000-14	Pump base kit	1	24	51000-24	Hose tail 3/4"	1
15	51000-15	12v motor kit	1	25	51000-25	Clamp	1
15	51000-15A	24v motor kit	1	26	51000-26	Hose 4m x 3/4" ID	1
16	51000-16	Handle w/ screws	1	27	51000-27	Filter Strainer	1
17	52007	Manual nozzle	1	28	51000-28	Key Kit 25 pieces	1

Trouble Shooting

Problem	Remedy
Pump does not pump	Check the wiring diagram to ensure all connections are set up correctly.
Pump motor is hot	Stop motor and give motor time to cool down after a maximum of 30 minutes running time. After 30 minutes, start again. If the motor is run for over 30 minutes, it will burn out the motor and void the manufacturer's warranty.
Pump does not pump	Check all thread connections on the inlet and outlet sides to ensure no fuel leaks exist and no air is getting in.

Head Office NSW
TEL: (02) 9939 0711
FAX: (02) 9939 0411

VIC
TEL: (03) 8787 8288
FAX: (03) 8787 8266

QLD
TEL: (07) 3889 8480
FAX: (07) 3889 8490

SA/NT
TEL: (08) 8241 7111
FAX: (08) 8241 7011

WA
TEL: (08) 9209 3066
FAX: (08) 9209 3933

TAS
TEL: (03) 6343 0477
FAX: (03) 6343 0911