



EL SERIES • PRODUCT INFORMATION

JULY 2017

**HR90045BSS****Stainless Steel Spring Rewind Hose Reel**

The EL Series HR90045BSS stainless steel spring rewind hose reel is a low pressure reel with a capacity for a 25m SAE100R1AT hose suitable for air or water applications in commercial vehicle workshops, food processing, bottling plants, manufacturing facilities, pulp & paper manufacturing, minesite workshops, service vehicles and oil & gas industries. The hose reel drum is sturdy and practical with stiffening ribs and flanged edges for operator safety. The positive latching mechanism automatically locks the hose assembly at the desired length and the adjustable arms allow for floor, wall or ceiling mounting according to needs. The EL Series HR90045BSS stainless steel spring rewind hose reel from Alemlube will provide you with a reliable & cost effective means of storing and retrieving hose assemblies in your workshop.

**PRODUCT SPECIFICATIONS, FEATURES AND BENEFITS**

Reinforced stainless steel frame provides maximum strength & stability

Working pressure of 2320psi (160bar)

25m x 12.7mm ID SAE100R1AT hose capacity

-40 ~ +100 hose working temperature

1.5mm thick robust drum assembly with stiffening ribs & flange edges

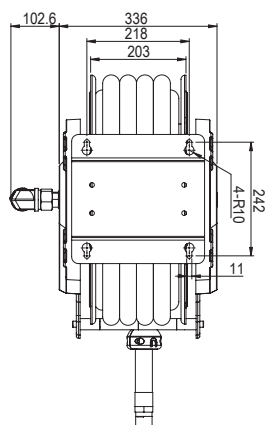
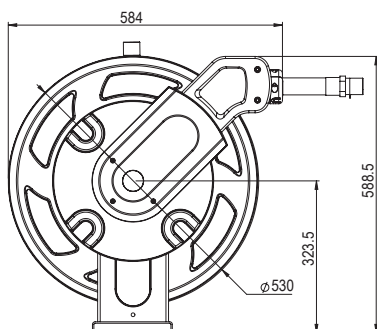
Reliable spring life tested to 20,000 cycles and positive ratchet lock design ensures a long working life

Can be mounted on the floor, wall or ceiling

Extends hose life and reduces hose replacement costs

Improves operator safety

Improves factory or workshop productivity

**ORDERING INFORMATION**

HR90045BSS Stainless Steel Spring Rewind Hose Reel

