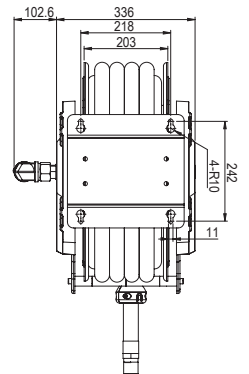
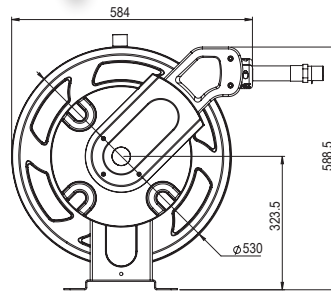


HR90060

## Oil, Diesel, Air &amp; Water Spring Rewind Hose Reel



August 2023

The EL Series HR90060 Oil, Diesel, Air & Water Spring Rewind Hose Reel is supplied standard with 30m x 12mm S.A.E.100R1AT one wire braid hose suitable for oil & diesel transfer and air or water applications in commercial vehicle workshops, food processing, bottling plants, manufacturing facilities, pulp & paper manufacturing, minesite workshops, service vehicles and oil & gas industries.

The hose reel drum is sturdy and practical with stiffening ribs and flanged edges for operator safety. The positive latching mechanism automatically locks the hose assembly at the desired length and the adjustable arms allow for floor, wall or ceiling mounting according to needs.

The EL Series HR90060 Oil, Diesel, Air & Water Spring Rewind Hose Reel from Alemlube will provide you with a reliable & cost effective means of storing and retrieving hose assemblies in your workshop.

## SPECIFICATIONS, FEATURES AND BENEFITS

- Reinforced steel frame provides maximum strength & stability
- Maximum working pressure of 300psi (20bar)
- Includes 30m x 12mm ID S.A.E.100R1AT hose & hose stop
- 1.5mm thick robust drum assembly with stiffening ribs & flange edges
- Reliable spring life and positive ratchet lock design
- Can be mounted on the floor, wall or ceiling
- Durable long lasting powder coated finish
- Improves operator safety

